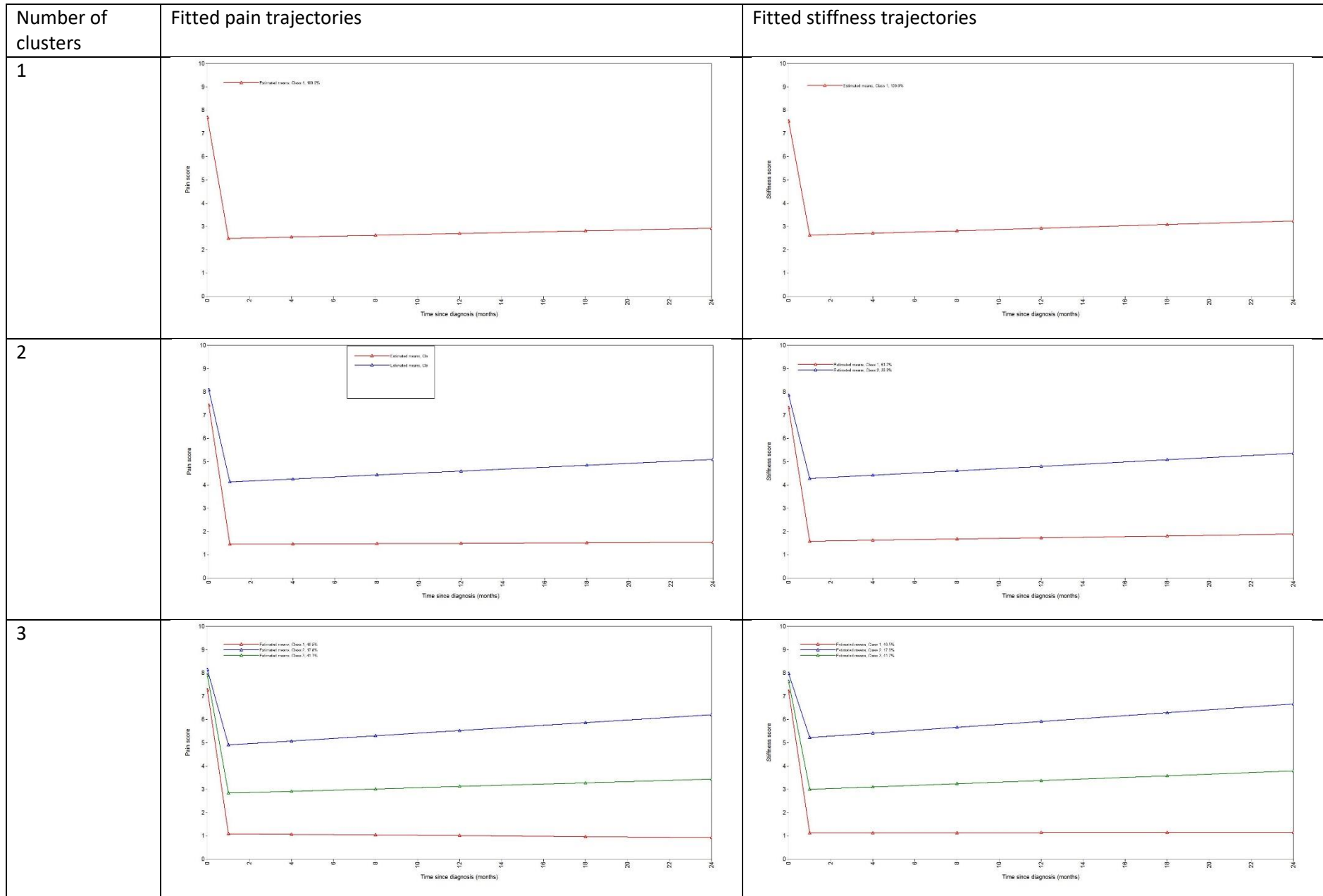
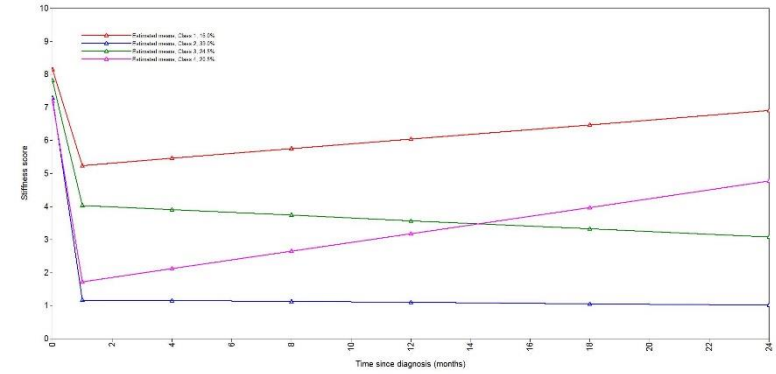
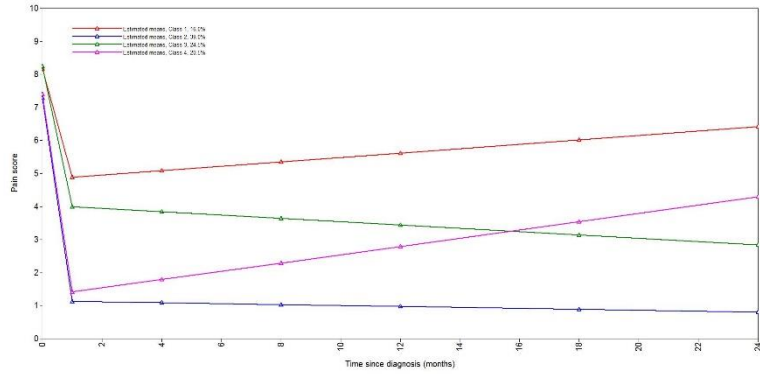


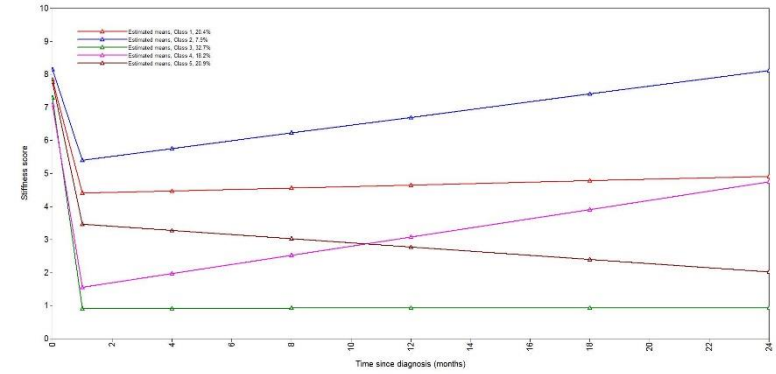
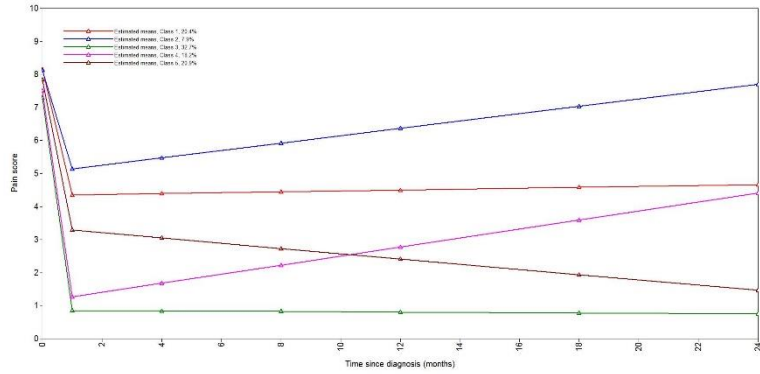
Supplementary Figure S5: Fitted (a) pain and (b) stiffness trajectories with varying numbers of clusters fitted (n=360)



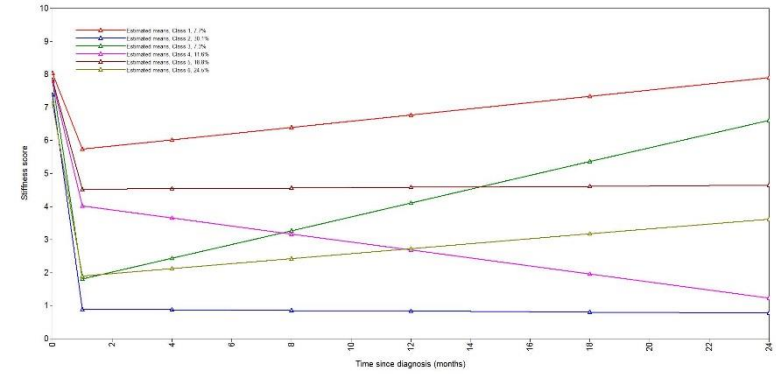
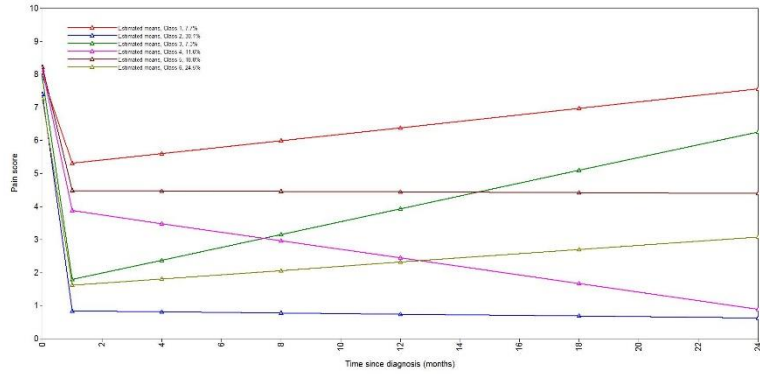
4



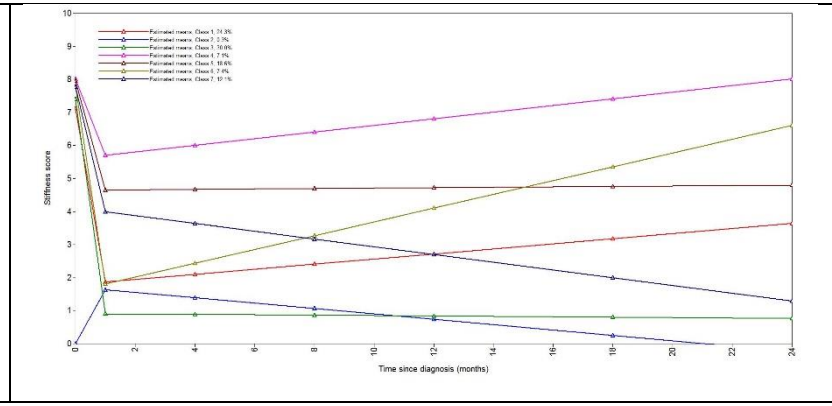
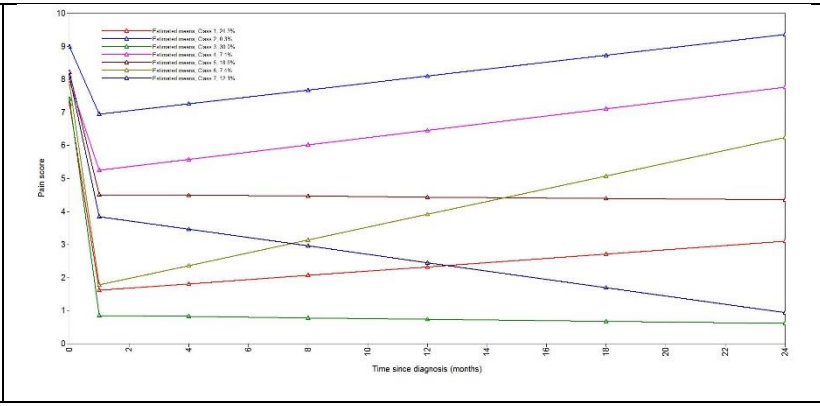
5



6



7



Supplementary Table S3. Latent Class Growth Analysis (LCGA) – piecewise model selection (n=360)

Cluster	AIC	BIC	ABIC	Entropy	VLMR LRT	Adjusted LMR LRT	PB LRT	Cluster sizes	Average posterior probability of cluster membership
1	22887	22965	22901	N/A	N/A	N/A	N/A	360	1.00
2	21236	21340	32366	0.912	0.0014	0.0017	<0.0001	217, 143	0.97, 0.98
3	20760	20892	20785	0.896	0.2179	0.2229	<0.0001	145, 64, 151	0.96, 0.95, 0.95
4	20573	20732	20602	0.880	0.1857	0.1894	<0.0001	57, 139, 93, 71	0.96, 0.97, 0.93, 0.87
5	20366	20552	20400	0.887	0.0586	0.0615	<0.0001	72, 28, 120, 67, 73	0.93, 0.95, 0.97, 0.92, 0.87
6	20283	20497	20323	0.893	0.6032	0.6073	<0.0001	28, 108, 25, 40, 68, 91	0.97, 0.95, 0.88, 0.86, 0.93, 0.91
7	20216	20457	20260	0.905	0.3633	0.3672	<0.0001	90, 1, 107, 25, 68, 25, 44	0.89, 1.00, 0.96, 0.97, 0.93, 0.94, 0.88

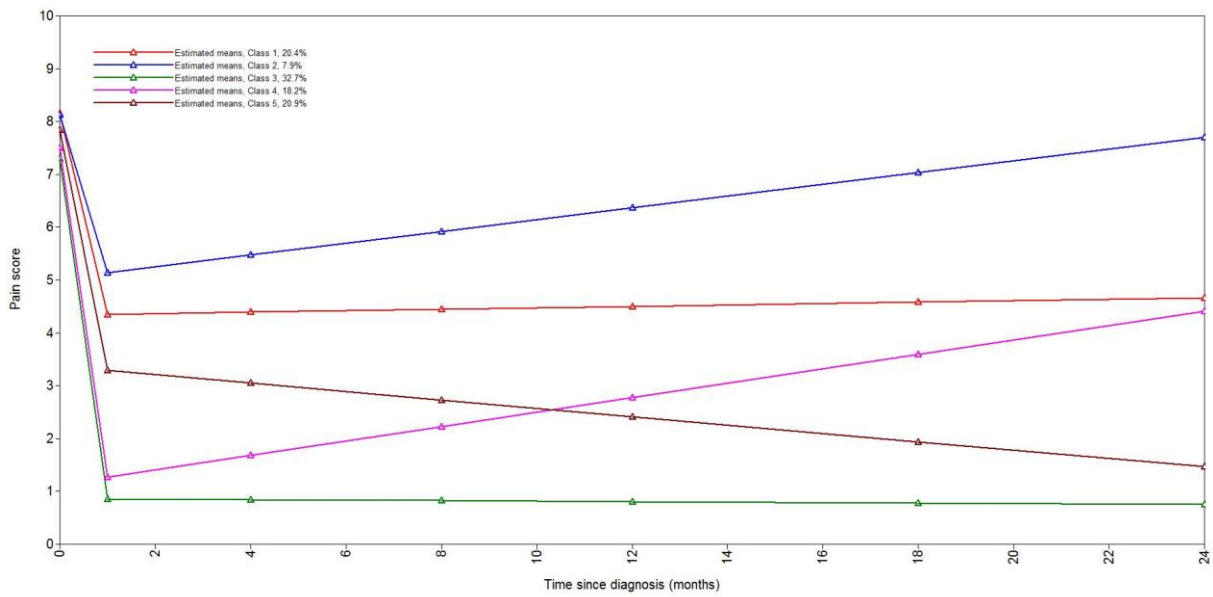
AIC – Akaike Information Criterion; BIC – Bayesian Information Criterion; ABIC – Sample-size adjusted BIC; VLMR LRT – Vuong-Lo-Mendell-Rubin likelihood ratio test; LMR LRT – Lo-Mendell-Rubin likelihood ratio test; PBLRT – parametric bootstrapped likelihood ratio test; p – p-value.

Model choice: choose model with lowest AIC, BIC, ABIC; entropy>0.8. Significant p-value for VLMR LRT, adjusted LMR LRT and PB LRT (suggests model over model with one fewer clusters). Number in each cluster should be >5% of sample size (i.e.>18). Average posterior probability of cluster membership should be >0.7

Note for this sensitivity analysis, a 5 cluster solution was assumed to compare to the main analysis. This table is for completeness only

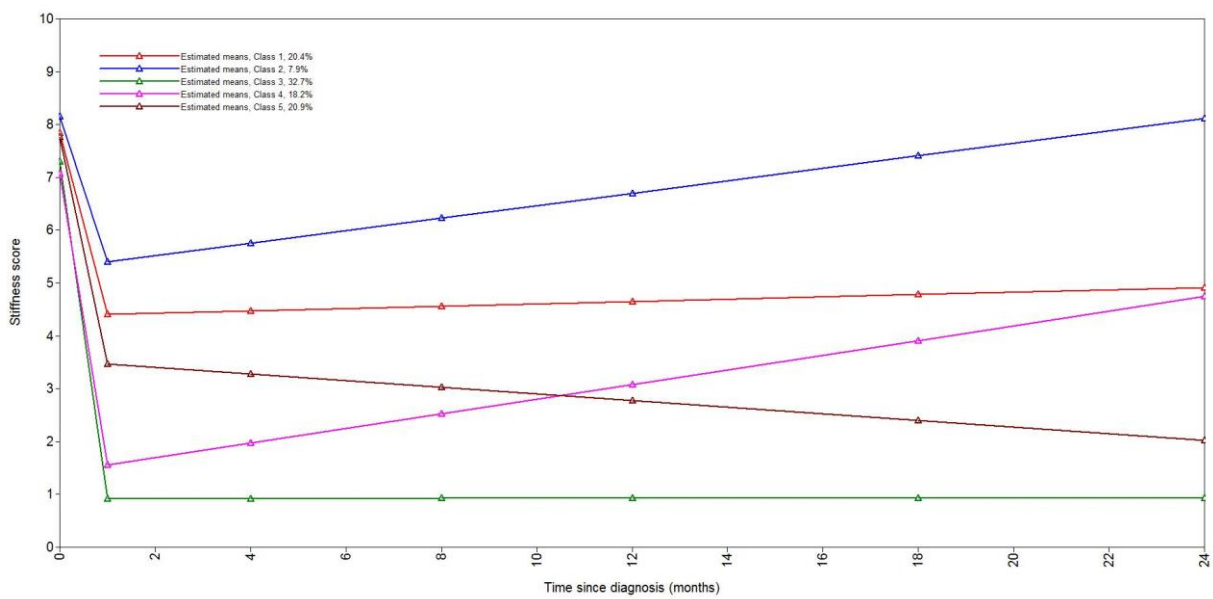
Supplementary Figure S6. Fitted latent growth curves of pain and stiffness in 5 cluster model (n=453)

a. Pain

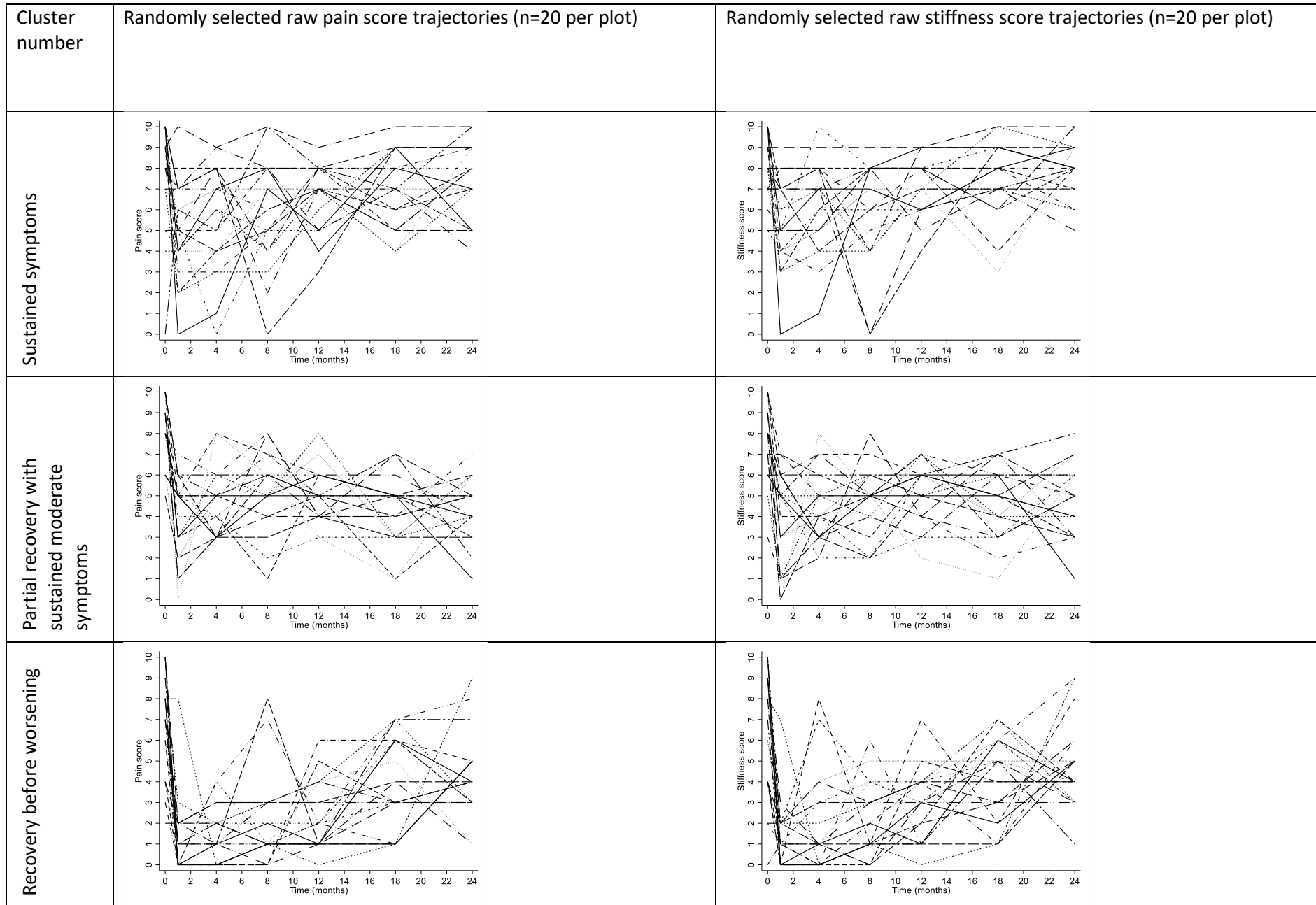


Cluster 1 - Partial recovery with sustained moderate symptoms; Cluster 2 - Sustained symptoms Cluster 3 - Rapid and sustained recovery; Cluster 4 - Recovery before worsening; Cluster 5 - Slow and continuous recovery;

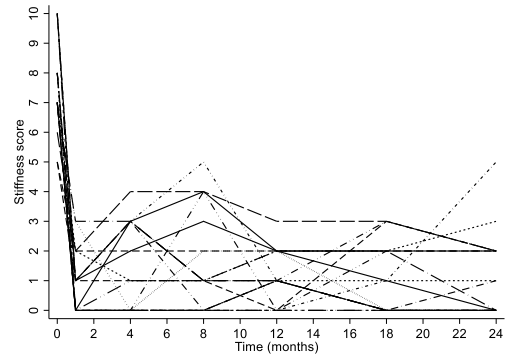
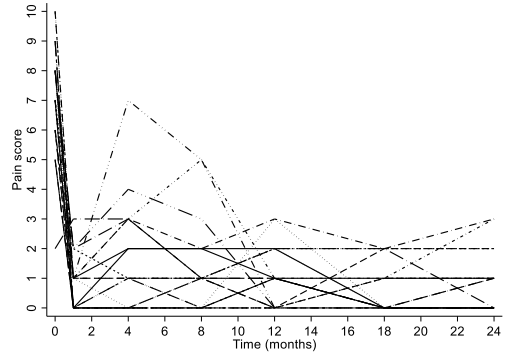
b. Stiffness



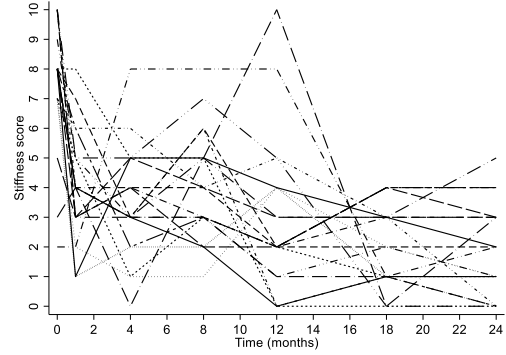
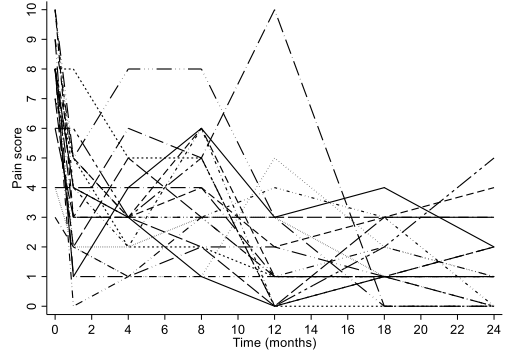
Supplementary Figure S7: Individual trajectories of pain and stiffness within the five clusters (n=360)



Rapid and sustained recovery



Slow and continuous recovery



Supplementary Table S4. Comparison of individual classifications in whole sample (n=652) and complete data (n=360)

n (%)		Cluster in whole sample (n=650)				
		Severe sustained symptoms	Partial recovery, sustained moderate symptoms	Recovery before worsening	Rapid and sustained recovery	Slow and continuous recovery
Cluster in complete data	Sustained symptoms	14 (26.9)	14 (8.9)	0	0	0
	Partial recovery with sustained moderate symptoms	0	66 (42.0)	2 (1.89)	0	4 (3.6)
	Recovery before worsening	0	0	67 (63.2)	0	0
	Rapid and sustained recovery	0	0	0	120 (53.6)	0
	Slow and continuous recovery	0	0	4 (3.8)	6 (2.7)	63 (56.8)
	Excluded	38 (73.1)	77 (49.0)	33 (31.1)	98 (43.8)	44 (39.6)