

Methodological Reflections: Conducting Action Research in Contemporary Healthcare Practice

Jane Jervis,

Lecturer In Nursing, Keele University, Staffordshire, UK
PhD student, Research Institute of Social Sciences,

Sue Read,

Professor of Learning Disability Nursing,
Keele University

Michael Murray

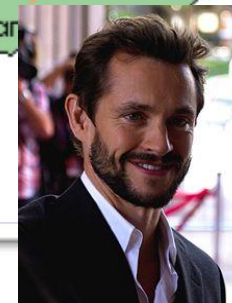
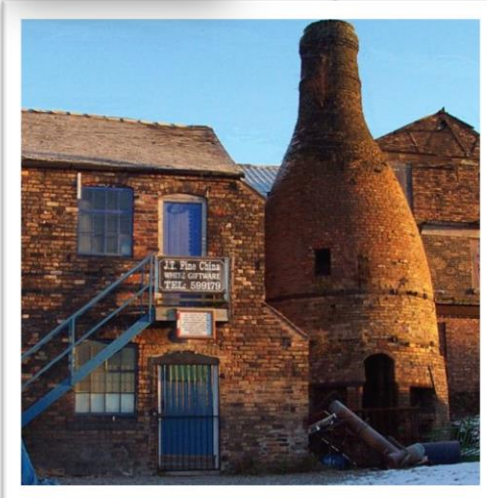
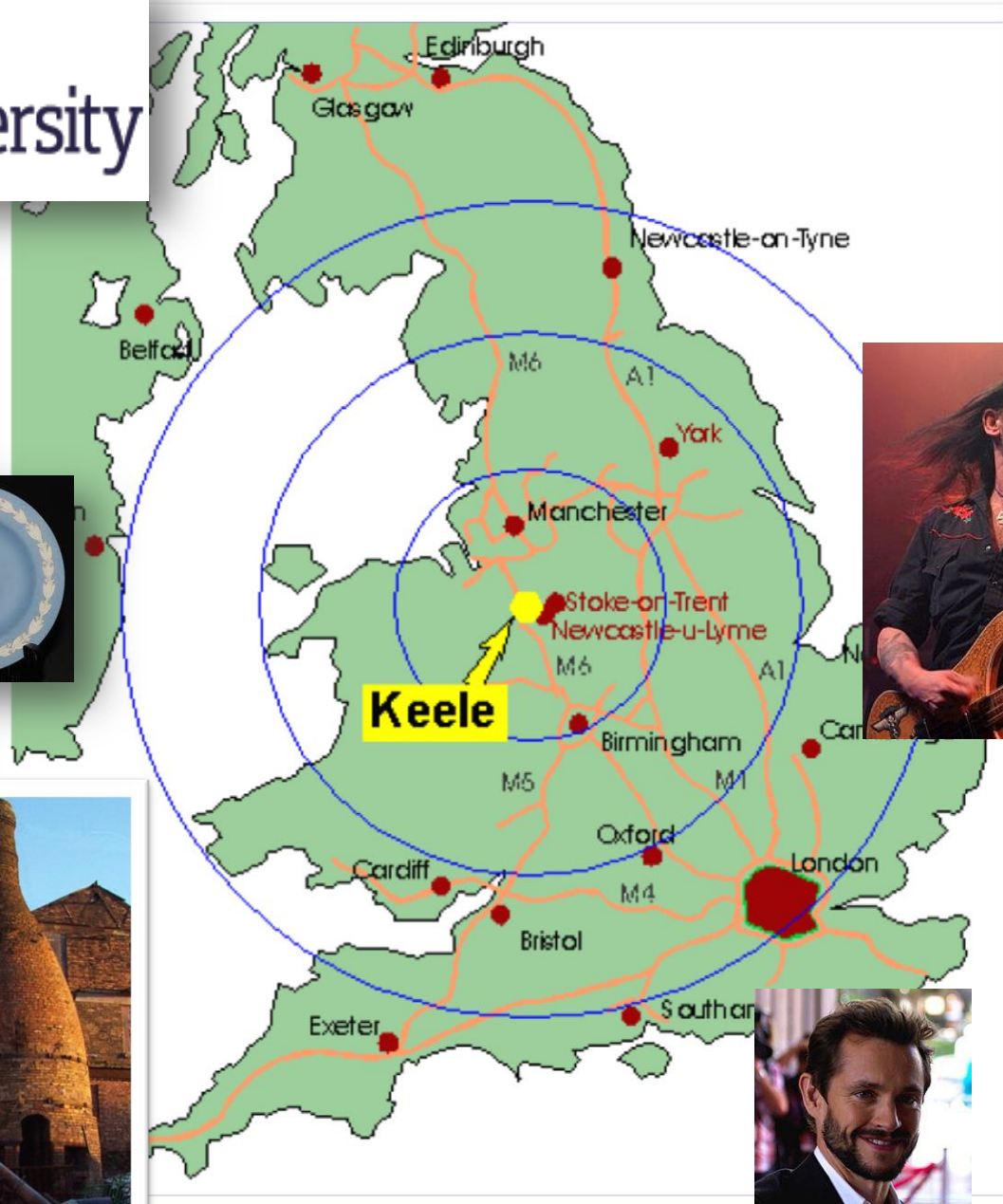
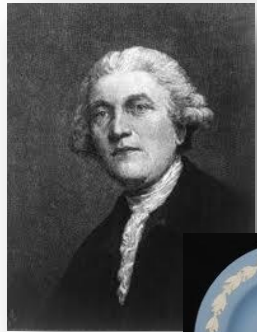
Professor of Psychology
Keele University,

s.c.read@keele.ac.uk

j.e.jervis@keele.ac.uk

m.murray@keele.ac.uk





Aims are to...

- Introduce the background of this PhD study
- Provide the rationale for using Action Research
- Outline some of the main challenges and successes
- Discuss associated learning points



My journey.....



MSc – Children:
Critical Perspectives



Experience in MAU
& Cardiac Arrest Team



'Sudden Death' Chapters



PhD

What did we know ...

Often *not included* in conversations at the hospital.

Leads to an increase in *anger and fear*.

Need information, reassurance, expression of feeling and the opportunity to be *involved*

Often *poorly informed*, unaware that death is anticipated, *poorly prepared*.

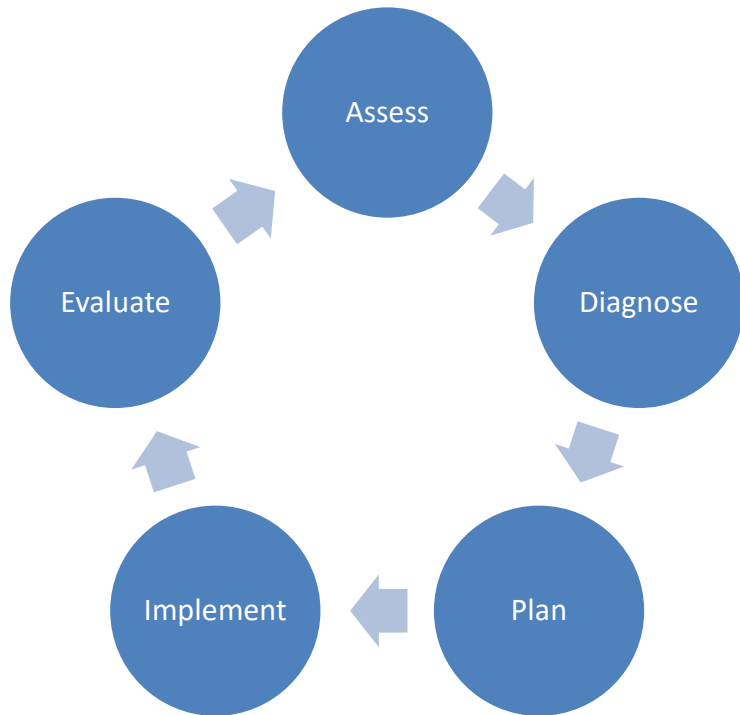
Study 5-15 year olds – questions to doctors were *seeking* reasons and cause for death (Thompson and Payne, 2000)

Research objective



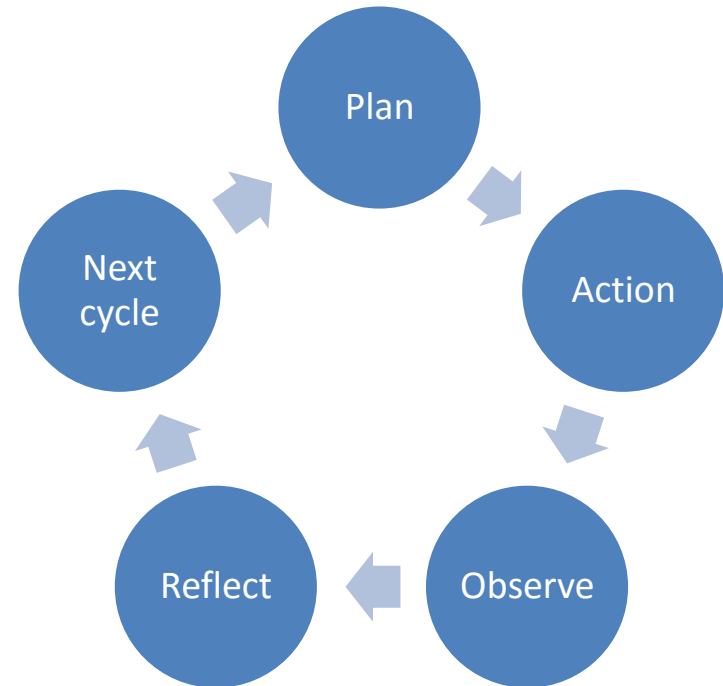
A Participatory Action Research (PAR) study to improve the support provided to children and their families when visiting adult relatives in hospital.

Rationale for PAR



The Nursing Process

The Action Research Cycle



Rationale for PAR

- Problem highlighted by colleagues
- Involved changing practice
- Can be used when participants lack a voice or autonomy
- Researcher as change agent:
 - a pivotal role in both developing and maintaining the research
 - where knowledge is irrevocably linked with action and produces outcomes relevant to that particular practice (McLeod, 2001)
 - an approach that emphasises collaboration, participation, active engagement and inclusion
 - where the researcher's relationship with the practice area of adult nursing remains a crucial element of the research and its subsequent development (Read, 2013)

Challenges and successes...



Study context

– modern healthcare

- Private Finance Initiative (PFI) – site relocations
- Management of change
- Francis Report – hospital merger
- Senior nurses
- Organisational culture
- Clinical priorities



Participation with hospital staff

- Recruiting participants
- Retaining participants
- Changing degrees of interest
- Time pressures
- Level of involvement
- Paediatric nurses



Participation with children and young people

- *Consultation*

- West Midlands Medicines for Children Research Network (MCRN) User Involvement Coordinator:
- Young Persons Advisory Groups
- Two consultations were held
- Discussed past experiences, their suggestions of what is required by children visiting adult relatives in hospital and my research proposal.



- *Collaboration*

- Local college interested in participating in the project
- Developing resources
- Focus Group
- Local young persons perspective
- Inclusive
- Time scales



Power relationships

Clinical expertise

Knowledge of the research cycle

Clinical and Political priorities

Access to participants

Safe space

Paediatric nurses



Insider - Advanced Nurse Practitioner

Insider/Outsider - PhD student and Researcher

Outsider – Lecturer and PhD student

Power relationships

Co-researcher with clinical experience
(Liamputtong, 2011)

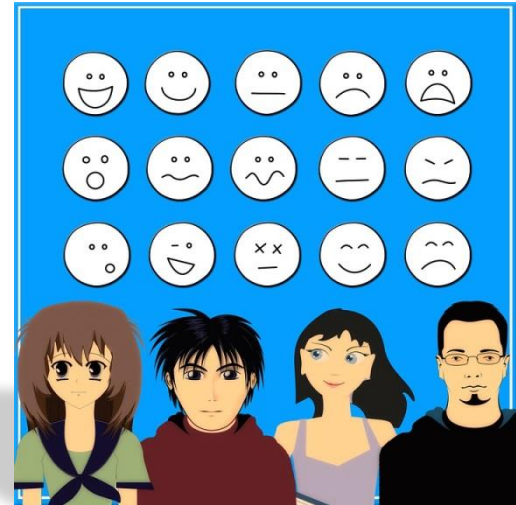


MCRN Young Persons Advisory Groups

- Experienced facilitators

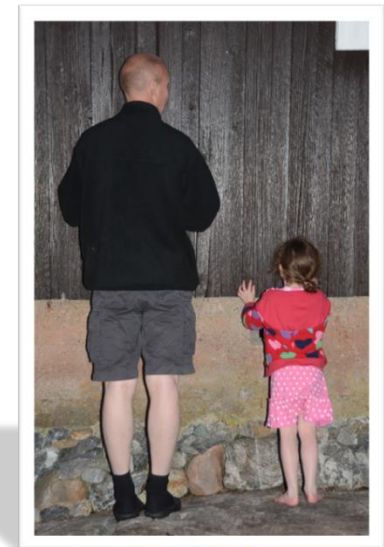
College students

- Ethics and consent
- Local college tutors
- Able to monitor the students 'comfort levels'
- Redress the power balance



Reflection and learning points

- Engagement of children and young people is an important area
 - Unique perspectives
 - Care is required in the preparation of those children and professionals involved
- Care must be taken in relation to research design and the research process
 - Recruitment and retention of participants
 - Reflexivity
 - Adapt to changes
 - Creation of safe spaces
 - What is meant by participatory





**Thank you for Listening.
Any questions ?**



Jane Jervis
Lecturer in Nursing
PhD Student
School of Nursing & Midwifery,
Keele University, Staffordshire, UK.



j.e.jervis@keele.ac.uk