

RESEARCH

Open Access



# Interspecies microbiome transplantation recapitulates microbial acquisition in mosquitoes

Kerri L. Coon<sup>1\*</sup>, Shivanand Hegde<sup>2†</sup> and Grant L. Hughes<sup>2\*</sup> 

## Abstract

**Background:** Mosquitoes harbor microbial communities that play important roles in their growth, survival, reproduction, and ability to transmit human pathogens. Microbiome transplantation approaches are often used to study host-microbe interactions and identify microbial taxa and assemblages associated with health or disease. However, no such approaches have been developed to manipulate the microbiota of mosquitoes.

**Results:** Here, we developed an approach to transfer entire microbial communities between mosquito cohorts. We undertook transfers between (*Culex quinquefasciatus* to *Aedes aegypti*) and within (*Ae. aegypti* to *Ae. aegypti*) species to validate the approach and determine the number of mosquitoes required to prepare donor microbiota. After the transfer, we monitored mosquito development and microbiota dynamics throughout the life cycle. Typical holometabolous lifestyle-related microbiota structures were observed, with higher dynamics of microbial structures in larval stages, including the larval water, and less diversity in adults. Microbiota diversity in recipient adults was also more similar to the microbiota diversity in donor adults.

**Conclusions:** This study provides the first evidence for successful microbiome transplantation in mosquitoes. Our results highlight the value of such methods for studying mosquito-microbe interactions and lay the foundation for future studies to elucidate the factors underlying microbiota acquisition, assembly, and function in mosquitoes under controlled conditions.

**Keywords:** Microbiota, Microbiome, Transplantation, *Aedes aegypti*, *Culex quinquefasciatus*, Insect, Mosquito, Diversity

## Background

A substantial body of evidence has emerged revealing the importance of microbiota to the biology of the animal hosts they associate with, which has stimulated broad interest in understanding the assembly of these communities. However, the daunting complexity of the microbiota present in many higher eukaryotes and the lack of

conventional microbiology techniques to culture these microbes have limited our ability to address important questions in the field. As such, the mechanisms facilitating host-microbe interactions and the functional role of the microbiome as a holistic unit are poorly elucidated. Microbiota transplantation approaches are one promising technique for basic research and therapeutics, but studies employing these techniques have mainly been undertaken in mammalian systems [1–6], and there has been little attempt to transfer these approaches to medically or agriculturally important insects.

Microbiome research has expanded in mosquitoes given their medical relevance and interesting biology. As holometabolous insects, mosquitoes have distinct

\*Correspondence: kerri.coon@wisc.edu; grant.hughes@lstmed.ac.uk

†Kerri L. Coon and Shivanand Hegde contributed equally to this work.

<sup>1</sup> Department of Bacteriology, University of Wisconsin-Madison, Madison, WI 53706, USA

<sup>2</sup> Departments of Vector Biology and Tropical Disease Biology, Centre for Neglected Tropical Disease, Liverpool School of Tropical Medicine, Liverpool L3 5QA, UK



aquatic and terrestrial life stages, including larvae that molt through four aquatic instars before pupating on the water's surface and emerging as terrestrial adults [7, 8]. All of these stages harbor gut microbial communities dominated by bacteria that can vary tremendously in diversity and abundance over time and space [9]. Larvae acquire their gut microbiota from their aquatic environment during feeding [10–14], after which bacteria experience periods of extreme turnover as parts of the larval gut are continuously shed and replaced during feeding, molting, and metamorphosis to the adult stage [15, 16]. The adult gut, in contrast, is initially seeded by bacteria from larvae and/or the larval environment but thereafter may be modulated by adult sugar and blood feeding activities [9], the latter of which underlies the ability of adult female mosquitoes to acquire and transmit disease-causing pathogens to humans [17]. While most of the larval and adult mosquito microbiota is thought to be restricted to the midgut [18–21], bacteria and other microbes are also known to colonize other mosquito tissues [22–25]. These include the common bacterial endosymbiont *Wolbachia*, which infects the germline of *Culex quinquefasciatus* and two *Anopheles* species, but not *Aedes aegypti*, and is transovarially transmitted to offspring each generation [26–32].

Altogether, the microbiota associated with the mosquito gut and other tissues can have profound impacts on mosquito biology by modulating larval growth and development [10, 12, 33–35] as well as adult survival [36–38], reproduction [33, 39], and the competency of adult female mosquitoes to transmit human pathogens [40]. As such, there is a growing interest in exploiting microbes for vector control [41–43]. However, available tools to manipulate the microbiota in mosquitoes are limited, lagging behind research in other systems [44–47]. Antibiotic treatment has been commonly used to perturb microbiota for experiments investigating tripartite interactions between mosquitoes, their microbiota, and human pathogens. While these experiments have provided insights into the role of bacteria in mosquito vector competence [40, 48–50], the use of antibiotics has its limitations. For example, some bacteria may not be susceptible to the antibiotics, meaning these approaches alter the microbiota rather than eliminate all microbiota [12, 51]. Furthermore, antibiotics can have off-target effects on host physiology and can affect mitochondria [52–55]. Alternatively, introduction of specific bacterial taxa into mosquito larvae or adults can be achieved by spiking the larval water or sugar solution, respectively [56–58]. However, while these approaches are effective at transferring specific bacterial taxa to mosquitoes, they likely do not reflect acquisition processes that occur in the field and can only be undertaken with culturable microbes.

We previously developed an approach to generate and maintain gnotobiotic mosquitoes colonized by individual bacterial taxa by sterilizing the surface of mosquito eggs and inoculating water containing bacteria-free (axenic) larvae hatched from surface-sterilized eggs under sterile conditions [10]. Similarly, the generation of axenic adult mosquitoes that can thereafter be inoculated with individual bacterial taxa via a sugar meal has been undertaken using heat-killed bacteria, supplementation of axenic larval cultures with eukaryotes, or reversible colonization [34, 59–61]. While these approaches have been used to broadly examine the biology of mosquito-microbe interactions and decipher the role of bacterial microbiota on host biology [10, 12, 21, 33, 34, 62–64], expanding these techniques to transfer complete or tailored microbial communities would be highly desirable.

Here, we developed an approach to transfer entire microbial communities between mosquito cohorts. We undertook transfers between (*Cx. quinquefasciatus* to *Ae. aegypti*) and within (*Ae. aegypti* to *Ae. aegypti*) species to validate the approach and determine the number of mosquitoes required to prepare donor microbiota. We chose to utilize these species in our experiments for two reasons. First, both *Ae. aegypti* and *Cx. quinquefasciatus* are biomedically relevant vector species that are commonly studied in the laboratory [7]. Previous studies have also carefully characterized microbiota acquisition and assembly across *Ae. aegypti* life history [10]. Second, while *Cx. quinquefasciatus* mosquitoes are readily infected by *Wolbachia* in the laboratory and commonly exhibit natural infections in the field [27, 29], *Ae. aegypti* mosquitoes are generally recalcitrant to infection and are not known to harbor natural infections [28, 30]. By introducing microbiota derived from both *Ae. aegypti* and *Cx. quinquefasciatus* donors into *Ae. aegypti* recipients, we could therefore also establish whether our transplantation approach (i) recapitulated patterns of microbiota assembly and persistence previously observed in *Ae. aegypti* (positive control) and (ii) supported the expectation that we would not be able to successfully transfer *Wolbachia* from *Cx. quinquefasciatus* donors to *Ae. aegypti* recipients (negative control). Altogether, our results demonstrate the transfer of a complete microbiota from one mosquito cohort to another and lay the foundation for future studies to examine microbiota assembly and function in mosquitoes colonized by defined microbiomes with potential for exploitation for mosquito and disease control.

## Methods

### Donor sample collection and preparation of donor pools for microbiota transplantation

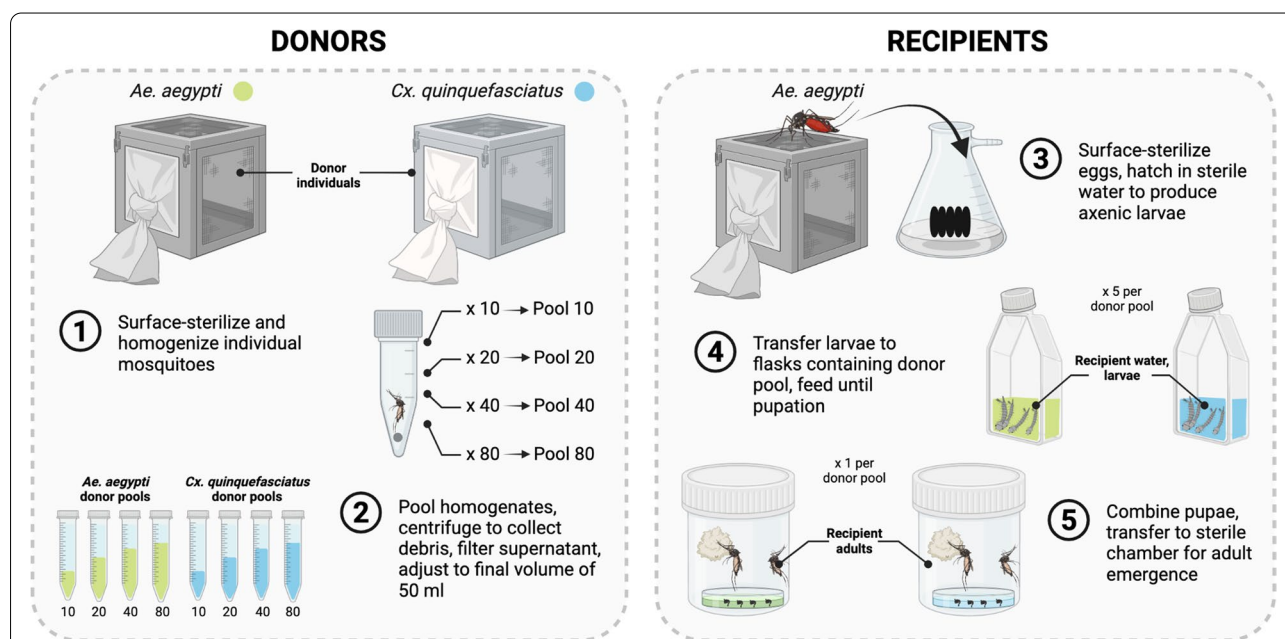
Laboratory-colonized *Ae. aegypti* (Galveston) and *Cx. quinquefasciatus* (Houston) mosquitoes used as donors

in this study were maintained in the same insectary and reared under the same conditions as described previously [63]. The *Ae. aegypti* colony, collected in Galveston, Texas, had been reared in the insectary for over 10 years, while the *Cx. quinquefasciatus* colony, collected in Houston, Texas, had been reared for 17 generations. In order to characterize microbiota diversity in both donor species, 150 individual 3- to 4-day-old sugar-fed adult females of each species were collected, surface sterilized by immersing in 70% ethanol for 5 min followed by 3- to 5-min washes in sterile 1X PBS, and stored at  $-20^{\circ}\text{C}$  for downstream sequencing. Adult mosquitoes from both species were also used to generate donor pools for microbiota transplantation. In brief, cohorts of 10, 20, 40, or 80 3- to 4-day-old adult female mosquitoes were collected, surface-sterilized in 70% ethanol for 5 min, rinsed three times in sterile 1X PBS for 5 min, and transferred individually to sterile 2-ml safe lock tubes (Eppendorf, Hamburg, Germany) containing 5 mm steel beads and 500  $\mu\text{l}$  of sterile 1X PBS (Fig. 1). Tubes were then homogenized at a frequency of 26 Hz/s for 1 min, briefly centrifuged to collect debris, and 50  $\mu\text{l}$  of the homogenate from each

tube was pooled (Fig. 1). Pooled homogenates were subsequently centrifuged at  $5000 \times g$  for 5 min to pellet any remaining debris, and the resulting supernatant was passed through a 5  $\mu\text{m}$  filter to produce a final filtrate for transplantation. Filtrates, which ranged in volume from 500  $\mu\text{l}$  (pool of 10) to 4 ml (pool of 80), were finally adjusted to a total volume of 50 ml using sterile water, and we repeated the entire process a total of three times to produce a total of 150 ml of each donor pool prior to use in downstream experiments (Fig. 1). A 200  $\mu\text{l}$  aliquot of each pool was also retained and immediately subjected to genomic DNA isolation using a NucleoSpin Tissue Kit (Machery-Nagel, Düren, Germany). The resulting DNA was then stored at  $-20^{\circ}\text{C}$  for downstream sequencing.

### Microbiota transplantation and recipient sample collection

Axenic (microbe-free) *Ae. aegypti* (Galveston) L1 larvae served as the recipient host for all transplantations. In brief, axenic larvae were prepared by submerging eggs in 70% ethanol for 5 min, then transferred to a solution of 3% bleach and 0.01% Decon-Quat 200V (Ab Scientific Ltd) for 3 min, followed by a wash in 70% ethanol



**Fig. 1** Overview of methodology used to perform inter- and intra-species microbiota transplantations in mosquitoes. (Left) Preparation of *Ae. aegypti* and *Cx. quinquefasciatus* donor pools. Individual 3–4-day-old sugar-fed adult females from our standard laboratory colonies were collected, surface-sterilized, and homogenized (1). Individual homogenates were then pooled and centrifuged to collect debris prior to filtering of the resulting supernatant to produce a final filtrate (2). Filtrates, which ranged in volume from 500  $\mu\text{l}$  (pool 10) to 4 ml (pool 80), were then adjusted to a total volume of 50 ml using sterile water prior to transplantation (2). (Right) Transplantation of donor pools into a focal host species (*Ae. aegypti*). Eggs laid by blood-fed adult females from the standard laboratory colony were surface-sterilized and hatched in sterile water to produce axenic larvae (3). Larvae were then transferred to replicate flasks ( $n = 5$ ) containing a 50 ml suspension of a given donor pool and provided sterilized diet every other day until pupation (4). Pupae produced from replicate flasks containing the same donor pool were finally pooled in water from the larval rearing flasks and transferred to a sterile plastic chamber for adult emergence (5). Donor and recipient samples collected for sequencing are indicated in bold. See “Methods” for more information. Created with BioRender.com

for 5 min, and finally rinsing three times in sterile water (Fig. 1). Eggs were then transferred to sterile water and vacuum hatched in sterile containers. Twenty axenic first instar larvae were then transferred to each of five T75 vented tissue culture flasks (Thermo Fisher Scientific, Waltham, MA, USA) containing 50-ml suspension of a given donor pool (described above) and 60  $\mu$ l of autoclaved powdered TetraMin pellets (Tetra, Melle, Germany) reconstituted with sterile water to a final concentration of 1 mg/ml (Fig. 1). In addition to the donor treatments, a negative control was done, whereby larvae were transferred to flasks containing sterile water and diet only (i.e., no microbes) and maintained alongside experimental flasks. All larvae (control and experimental) were provided sterilized diet every 2 days until the treatment groups pupated (the control group did not pupate and died at L2 or L3), while water from control flasks was used to screen for contamination throughout the experiment as described previously [10]. Flasks were maintained at 70% humidity and 27 °C.

In order to assess successful microbiome transplantation, four sets of recipient samples were collected for sequencing: (i) 200  $\mu$ l of larval water from each replicate flask, collected when larvae had molted to the third instar, (ii) third instar larvae (pools of 5) collected from the same flasks, and at least three individual sugar-fed adult females that had emerged from pupae either (iii) 3 or (iv) 6 days prior to collection. Pupae produced from replicate flasks containing the same donor pool were pooled and transferred to sterile water in a sterile plastic chamber for adult emergence. Newly emerged adults were provided 10% sucrose in sterile water ad libitum until collection as described above. Total genomic DNA was extracted from all recipient samples using a NucleoSpin Tissue Kit (Machery-Nagel, Düren, Germany). Larvae and adults were surface sterilized as described above before DNA isolation.

#### **Amplicon library construction, sequencing, and data analysis**

Subsamples from the DNA extracts were used for amplifying the V3-V4 region of the bacterial 16S rRNA gene using primers 341F (CCTACGGGNGGCWGCAG) and 805R (GACTACHVGGGTATCTAATCC) [65], followed by PCR amplification for Illumina sequencing. Samples were paired-end sequenced ( $2 \times 250$  bp) on an Illumina MiSeq. Sequence reads were processed using the DADA2 pipeline in QIIME 2-2019.4 [66, 67]. In brief, sequence reads were first filtered using DADA2's recommended parameters and an expected error threshold of 0.5. Filtered reads were then de-replicated and denoised using default parameters. After building the ASV table and removing chimeras and low-abundance ( $< 0.005\%$ ) ASVs,

taxonomy was assigned using a Naive Bayes classifier natively implemented in QIIME 2-2019.4 and pre-trained against the Greengenes reference database (13.8) [68, 69]. A phylogenetic tree was built using FastTree (v2.1.3) [70] from a multiple sequence alignment made with the MAFFT alignment tool [71] against the Greengenes core reference alignment [72]. Patterns of alpha diversity (as measured by Shannon's H index and ASV richness) and beta diversity (as measured by the Bray-Curtis dissimilarity index) were analyzed using standard workflows in QIIME 2-2019.4, with a sampling depth of 1000 reads per sample and default parameters, and downstream statistical analyses were performed using R (<http://www.r-project.org/>). In brief, differences in alpha and beta diversity between donor and recipient samples were analyzed by Kruskal-Wallis tests or Bonferroni-corrected pairwise Dunn's tests to compare recipient samples to their respective donor pool. Differences in the proportion of rare and common taxa present in different donor pools were analyzed by pairwise Fisher's exact tests. Finally, the significance of donor and recipient sample clustering by donor species was analyzed by permutational multivariate analysis of variance (PERMANOVA) implemented in QIIME.

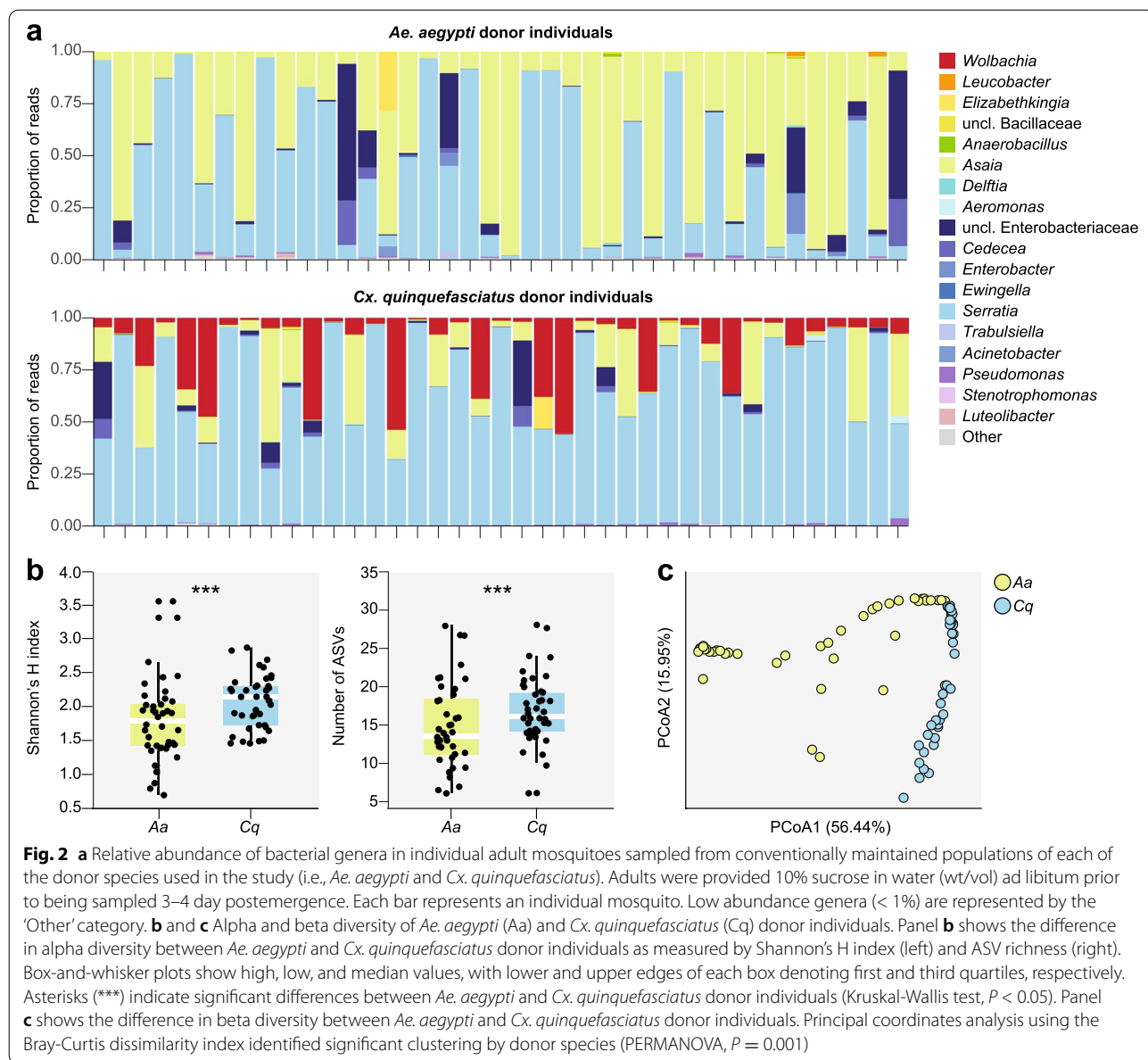
## **Results**

### **Adult mosquitoes harbor relatively complex bacterial communities that can be isolated for transplantation**

For each donor species (*Ae. aegypti* and *Cx. quinquefasciatus*), we characterized the microbiota of 40 individual adult mosquitoes by sequencing the V3-V4 regions of the 16S rRNA gene. After filtering, denoising, merging, and removing chimeras, we obtained a total of 2,544,303 reads with a median sequencing depth of 32,803 reads per sample (Additional file 1). We obtained an unusually low number of reads ( $< 1000$ ) for a single *Cx. quinquefasciatus* sample (Additional file 1), which was removed from subsequent analyses. We then assigned taxa and plotted relative abundance of taxa across samples.

We identified 103 and 120 ASVs across all of the *Ae. aegypti* and *Cx. quinquefasciatus* individuals we sampled, respectively (Additional file 2). However, the vast majority of our sequencing reads ( $> 90\%$ ) were assigned to ASVs belonging to one of four genera: *Serratia*, *Asaia*, *Cedecea*, and another unclassified genus within the *Enterobacteriaceae* (Fig. 2a; Additional file 2). Considering both the presence/absence and relative abundance of all of the ASVs we detected, bacterial communities present in both donor species exhibited significant differences in both alpha diversity (Fig. 2b; Additional file 1) and beta diversity (Fig. 2c), which were associated with shifts in the relative abundance of specific community members detected in each species (Fig. 2a; Additional





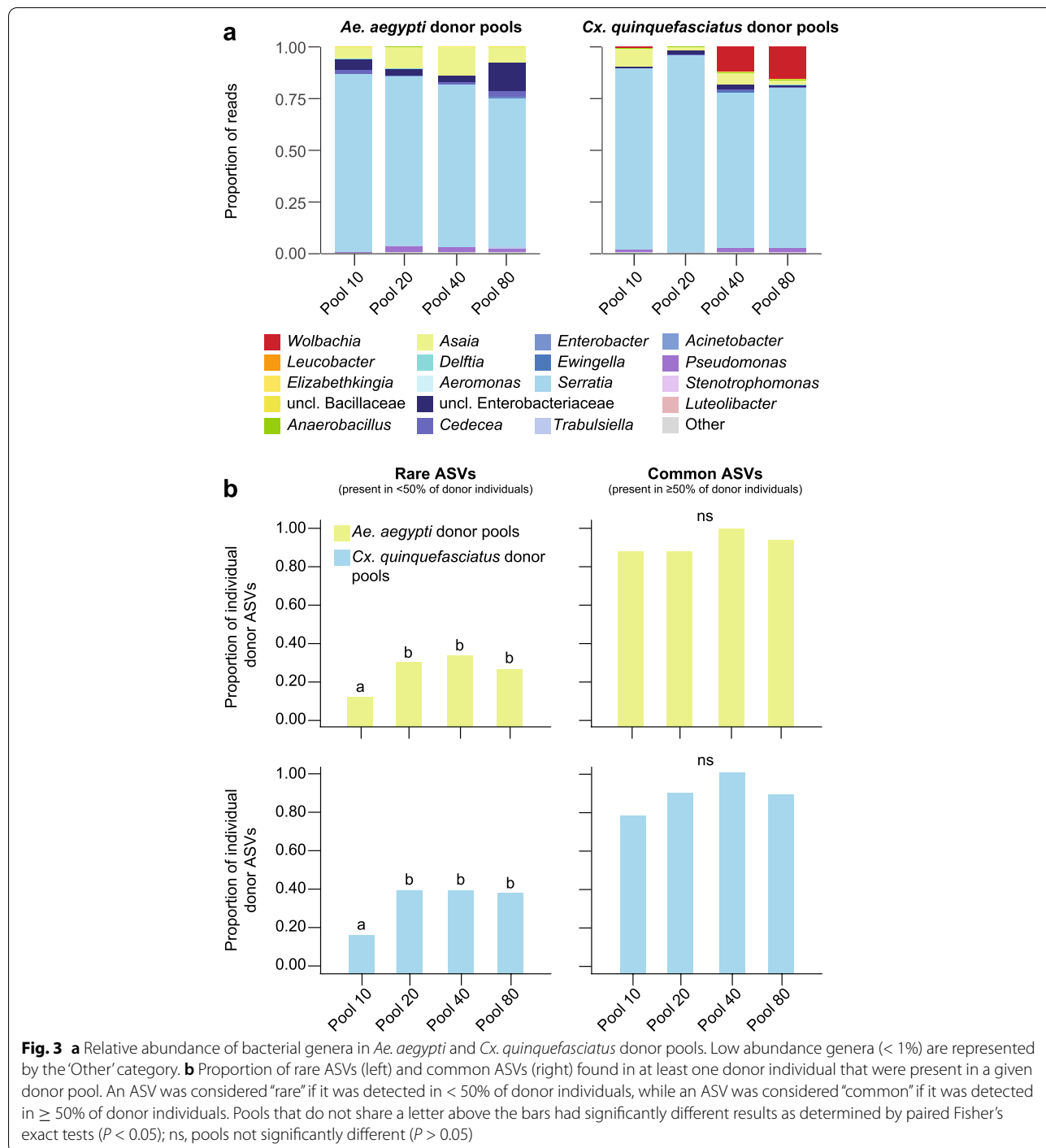
file 2). As expected, these included the presence of *Wolbachia* in *Cx. quinquefasciatus* donor individuals and the near complete absence of *Wolbachia* across the *Ae. aegypti* donor individuals we sampled, which is consistent with no established natural infection ever being observed in this species [28, 30]. *Cx. quinquefasciatus* donor individuals further contained a notably greater percentage of taxa within the genus *Serratia*, while *Ae. aegypti* donor individuals contained a greater percentage of *Asaia* spp. (Fig. 2a; Additional file 2). Interestingly, we also detected significant negative correlations between the relative abundance of ASVs belonging to the genus *Serratia* and ASVs belonging to other taxa within the

family *Enterobacteriaceae* across all *Ae. aegypti* and *Cx. quinquefasciatus* donors we sampled (Additional files 2 and 3), which is consistent with previous results in field-collected mosquitoes of the same species and our recent experimental findings [58, 63].

In order to determine how many individuals were required to transfer a representative microbiome to recipients, we generated homogenates using pools of 10, 20, 40, or 80 *Ae. aegypti* or *Cx. quinquefasciatus* donor individuals and assessed the diversity of ASVs recovered in each pool relative to ASV diversity across the 40 individuals we previously sequenced from laboratory populations of each donor species (described above).

We obtained a total of 438,839 sequences representing 68 and 64 ASVs across the four *Ae. aegypti* and four *Cx. quinquefasciatus* donor pools we sequenced, respectively, and each pool was dominated by the same four genera detected in the 40 individuals previously sequenced from each donor species population (Fig. 3a; Additional files 1 and 2). Each pool also captured the majority of donor

ASV diversity (> 96%), although recovery varied with respect to how common a given ASV was across all of the donor individuals we sequenced (Fig. 3b; Additional file 2). The number of individuals used to generate each pool had the greatest impact on recovery of rare ASVs (i.e., those present in < 50% of the donor individuals we sequenced), with significantly fewer rare ASVs being



recovered in the pool generated using 10 individuals. However, there were no significant differences in recovery of more common ASVs, which were present in  $\geq 50\%$  of donor individuals and constituted  $> 93\%$  of individual donor sequences, between any of the pools we generated (Fig. 3b; Additional file 2).

### Microbiota transplantation recapitulates donor microbial diversity in recipient individuals

To assess our ability to transplant microbiota between different mosquito species, we introduced each of our *Ae. aegypti* and *Cx. quinquefasciatus* donor pools into the water of cultures containing axenic *Ae. aegypti* larvae. These cultures were subsequently maintained under standard rearing conditions, and 16S rRNA gene amplicon sequencing was used to assess bacterial diversity in replicate samples of the aquatic habitat (water in rearing flasks), larvae (collected as third instars), and adults from each culture (collected 3- and 6-day postemergence). A total of 50, 40, and 108 water, larval, and adult samples were sequenced, respectively, with a total of five samples being discarded prior to downstream analyses due to low sequencing depth ( $< 1000$  reads) (Additional file 1).

The resulting dataset, which contained a total of 4,540,617 sequences across all of the recipient water, larval, and adult samples we sequenced (Additional file 1), revealed that 64 and 61 of the 68 and 64 ASVs found in *Ae. aegypti* and *Cx. quinquefasciatus* donor pool communities, respectively, representing  $> 99\%$  of all donor pool sequences, were detected in recipient samples (Additional file 2). The majority of these ASVs ( $> 70\%$ ) also persisted in recipient communities over time, although there were dramatic shifts in both alpha and beta diversity across the different life stages and water samples we sequenced (Figs. 4 and 5; Additional files 1, 2, 4, and 5). Alpha diversity was overall highest in water and larvae, while adult recipient individuals harbored communities that did not significantly differ in alpha diversity from input donor communities (Fig. 4b; Additional file 1), regardless of the size of the input donor pool (Additional files 1, 4, and 5). Differences in beta diversity, measured as average Bray-Curtis dissimilarity, were also overall higher between input donor communities and the recipient water and larval samples we collected than between input donor communities and recipient adult samples (Fig. 5), although the degree of similarity between recipient adult and input donor communities varied over time postemergence and as a function of the size of the input donor pool (Additional file 6). More specifically, recipient water and larval communities displayed striking amplification of taxa within the Chitinophagaceae, Microbacteriaceae (*Leucobacter* and *Microbacterium* spp.), and Flavobacteriaceae (*Flavobacterium*, *Chryseobacterium*,

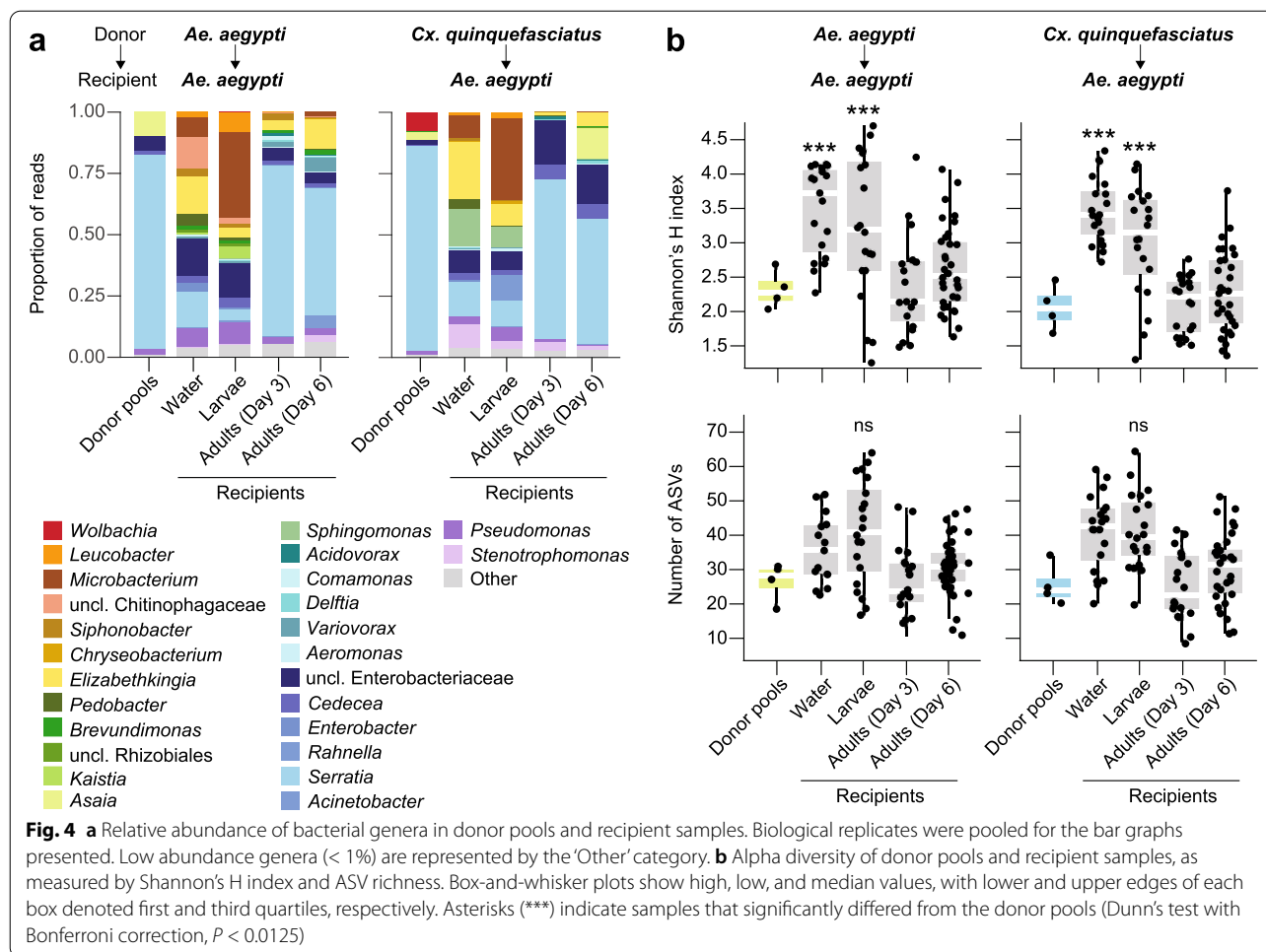
and *Elizabethkingia* spp.) that were less abundant in input donor communities (Fig. 4a; Additional file 2). In contrast, adult recipient communities displayed striking amplification of taxa within the genera *Serratia*, *Asaia*, *Cedecea*, and an unclassified genus within the *Enterobacteriaceae*, consistent with input donor communities (Fig. 4a; Additional file 2).

### Both host and environmental factors impact microbiota transplantation efficacy

To assess whether microbiota transplantation recapitulated observed differences in microbiota diversity between donor species in recipient individuals, we last compared alpha and beta diversity of donor *Ae. aegypti* and *Cx. quinquefasciatus* individuals to recipient *Ae. aegypti* adults emerging from cultures inoculated with pools generated from each donor species. Consistent with our previous results comparing bacterial communities in donor individuals of each species (Fig. 2), communities in recipient adults that emerged from cultures inoculated with pools generated from each donor species exhibited significant differences in both alpha diversity (Fig. 6b) and beta diversity (Fig. 6c). However, these differences were associated with shifts in the relative abundance of community members that were relatively rare in input donor communities (e.g., taxa within the genera *Elizabethkingia*, *Acinetobacter*, *Pseudomonas*, and *Stenotrophomonas*) (Figs. 2 and 6a; Additional file 2). More specifically, the predominance of *Asaia* in *Ae. aegypti* donor communities was not observed in recipient individuals, likely owing to the inability of this bacterium to reliably persist in the water of larval cultures (Fig. 6a and Additional file 2). *Wolbachia* from *Cx. quinquefasciatus* donor communities did not infect recipient individuals (Fig. 6a and Additional file 2), although this was expected given that transfections of *Wolbachia* into mosquitoes require access through the germline. While these patterns were generally similar between groups of recipient individuals inoculated with input donor pools generated using different quantities of mosquitoes, adult recipients inoculated with pools generated using fewer individuals exhibited more variable bacterial communities overall, due to the stochastic proliferation of rare donor taxa and/or antagonism of *Serratia* by *Enterobacteriaceae*, consistent with our previous observations across donor individuals (Fig. 6a; Additional files 2 and 7).

### Discussion

Numerous studies describing the diversity and function of mosquito-associated microbial taxa and assemblages have been published recently, leading to the discovery of potential interactions between mosquitoes and their microbiota that could be manipulated to enhance

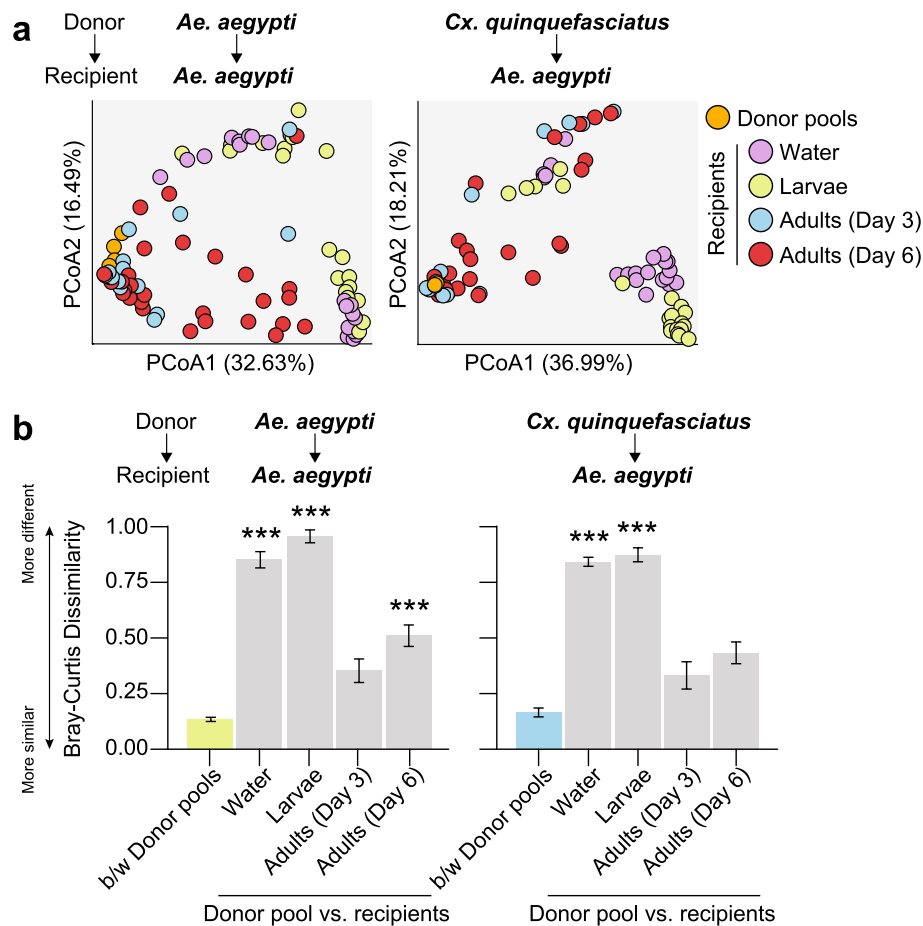


or reduce mosquito fitness and/or vector competency (reviewed in [42]). However, questions remain about the reproducibility, applicability, and physiological relevance of these data owing to discrepancies in experimental technique, lack of standardization, and the use of laboratory-colonized mosquito strains and species that harbor microbiota that vary substantially within and between different laboratories and that differ substantially from naturally occurring mosquitoes in the field [12, 13, 73–78]. In this study, we developed a simple approach to successfully isolate donor microbial communities from adult mosquitoes. We then used this approach to transfer microbiota within (i.e., *Ae. aegypti* donors to *Ae. aegypti* recipients) and between (i.e., *Cx. quinquefasciatus* donors to *Ae. aegypti* recipients) different donor and recipient species in order to assess our ability to recapitulate donor microbial diversity in adult recipients.

Our results demonstrate the successful transfer of bacteria from donor to recipient populations of mosquitoes, with recipient adult individuals retaining the vast majority of donor bacterial diversity. Our results

also demonstrate that relatively small pools of donor microbiota (i.e., derived from  $\geq 10$  donor individuals) are sufficient to capture taxa that are highly abundant and/or common in a given donor mosquito population. This suggests that our methods could readily be applied to study microbiota isolated from field populations, even in cases where large-scale mosquito collections are difficult. However, future work will be necessary to confirm that the patterns observed using our approach are indeed the same for donor microbiota generated from field mosquitoes that harbor microbial communities that are more diverse than those present in laboratory mosquitoes and that are not adapted to the laboratory environment [12, 13, 73–78]. Recently developed methods to generate axenic adults [34, 59–61] also strongly position us to examine the potential to adapt our protocol to introduce field-derived donor microbiota pools directly into adults via a sugar meal and therefore avoiding selective pressures exerted on introduced microbes by standard laboratory larval diets and larval growth and molting.

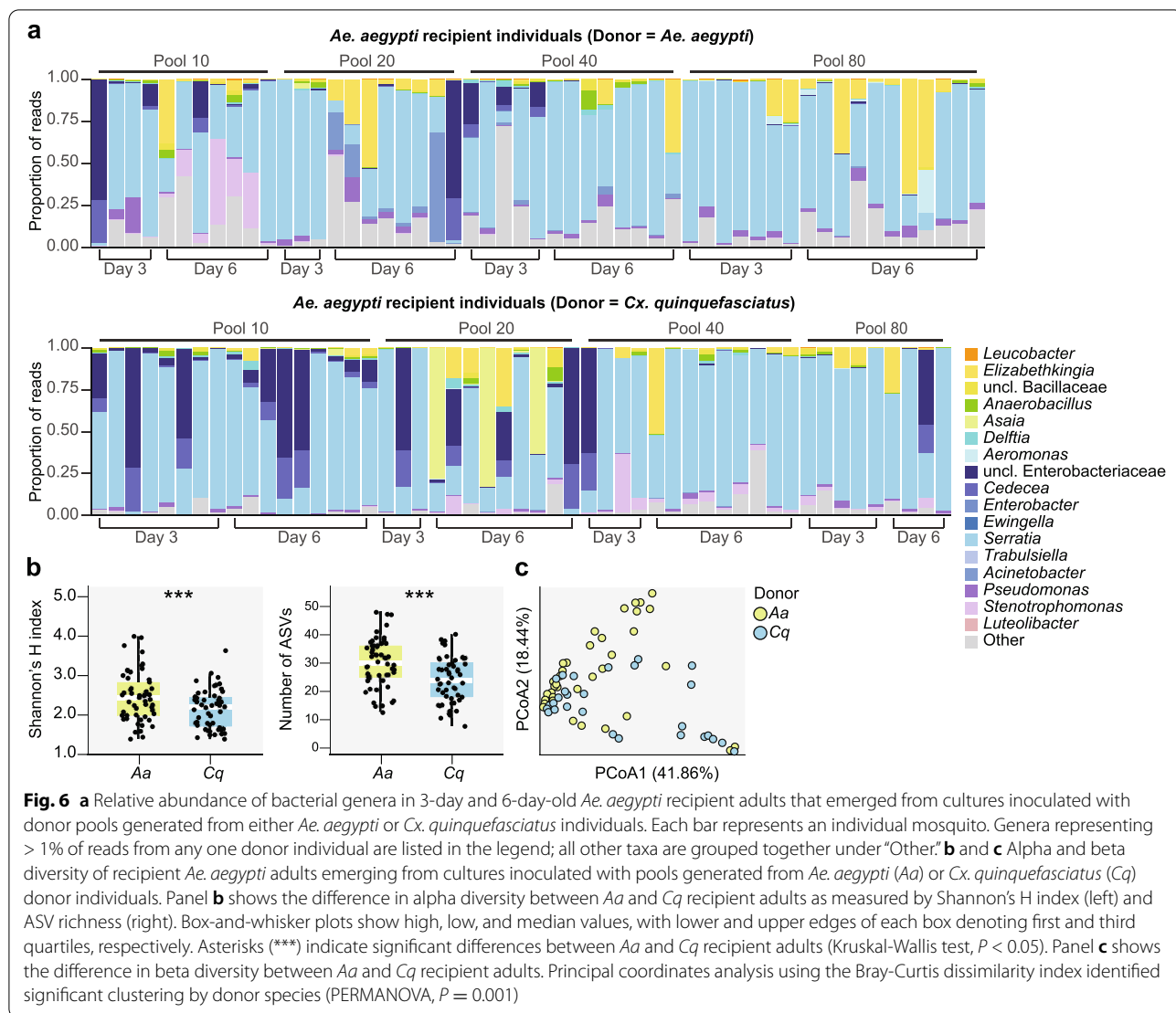




**Fig. 5** **a** Principal coordinates analysis using the Bray-Curtis dissimilarity index. Circles are colored by sample source (donor pools, orange; water, purple; larvae, green; 3-day-old adults, blue; 6-day-old adults, red). **b** Average Bray-Curtis dissimilarity between (b/w) donor pools versus between a given donor pool and recipient samples. Mean values  $\pm$  standard errors are shown. Asterisks (\*\*\*) indicate comparisons for which the average dissimilarity between a given donor pool and group of recipient samples was significantly higher than that expected as a result of the transplantation procedure itself (i.e., between donor pools) (Dunn's test with Bonferroni correction,  $P < 0.0125$ )

These results also highlight the value of our approach for studying the underlying bases of mosquito-microbe interactions, as has been demonstrated in other animals. For example, microbiome transplantation approaches have been employed in *Nasonia* wasps to assess the selective pressures contributing to observed patterns of phylosymbiosis in the system [47] as well as *Drosophila melanogaster* flies and *Bombus terrestris* bumblebees to identify relationships between host microbiota composition and different thermotolerance or immunity phenotypes [45, 46]. Reciprocal microbiome transplantations have also been performed across different vertebrate animal species. For example, reciprocal microbiota transplantations between zebrafish and mice have revealed factors specific to the host gut habitat that shape microbial community structure in each species [44]. Indeed, our results point to both host and environmental factors in shaping microbiota

acquisition and persistence in mosquitoes. That the microbiota in recipient adult individuals looked most similar to the microbiota of donor individuals supports previous studies in *Ae. aegypti* identifying life stage as a dominant factor shaping mosquito microbiota [10, 11, 14, 73, 74, 79–84]. Additionally, there were differences in microbiota diversity between our donor species in recipient adults which support previous findings indicating that while community membership may be largely driven by the environment and life stage, community features such as total and taxon-specific abundances may also be shaped by host genetics [85, 86]. Future studies could employ microbiome transplantation to improve our understanding of the factors shaping microbiome acquisition and assembly in mosquitoes and the mechanisms by which specific microbial taxa and assemblages contribute to different mosquito traits under controlled conditions.



Future work is also warranted to determine if the approach developed herein is relevant for other microbes such as fungi or viruses, which are also known to impact mosquito biology [87, 88]. The applicability of this approach for other microbes likely depends on their biology and, in particular, their mode of transmission. For example, extracellular members of the mosquito gut microbiota that are commonly detected in environments where mosquitoes persist in the laboratory are likely to be transferred, while those that are intracellular may not be. In line with this, our results supported the expectation that the intracellular bacterium *Wolbachia*, which was present in the *Cx. quinquefasciatus* donors used in this study, would not be successfully transferred to *Ae. aegypti* recipients. We also appreciate that tissue localization of bacteria and other microbes may be pertinent for the transplantation process, and that future studies should

integrate complementary approaches to verify the viability of key members of the donor microbiota in recipient individuals' posttransplantation. Here, we prepared donor microbiota from whole-body mosquitoes and similarly assessed microbiota assembly and persistence in whole-body recipient individuals. Additional work will be necessary to establish patterns of donor microbiota colonization across recipient host tissues and/or to validate methods for isolation of microbiota from specific donor and recipient tissues. Methods for long-term preservation of donor microbiota will also be necessary to facilitate long-term studies and intra- and interlaboratory comparisons of microbiota assembly across different host strains. Nevertheless, our results provide a critical first step toward the standardization of microbiome studies in the field of vector biology to include mosquito hosts colonized by defined microbiota that can be replicated within

and between labs. They also provide a critical first step toward our ability to recapitulate and study field-derived microbiota in laboratory settings.

## Conclusions

We have successfully isolated and transplanted microbiomes from donor to recipient mosquitoes. This approach lays the foundation for future work to facilitate standardized studies of mosquito-microbe interactions, to examine host-microbe interactions, and to identify effective strategies for manipulating mosquito microbiota to control mosquito populations and mosquito-borne diseases.

## Supplementary Information

The online version contains supplementary material available at <https://doi.org/10.1186/s40168-022-01256-5>.

**Additional file 1: Supplementary Table 1.** Sequencing and diversity statistics for 16S rRNA gene amplicon libraries prepared from donor and recipient samples.

**Additional file 2: Supplementary Table 2.** Taxonomic assignments and prevalence of each ASV in each sample, along with whether a particular ASV was considered 'rare' or 'common' among individuals of a particular donor species.

**Additional file 3: Supplementary Figure 1.** Significantly negative correlation between relative abundance of ASVs belonging to the bacterial family Enterobacteriaceae and ASVs belonging to the genus *Serratia* across all *Ae. aegypti* and *Cx. quinquefasciatus* donor individuals (Spearman's rank test,  $P < 0.05$ ).

**Additional file 4: Supplementary Figure 2.** (Left) Relative abundance of bacterial genera in *Ae. aegypti* donor pools and recipient samples. Biological replicates were pooled for the bar graphs presented. Low abundance genera (<1%) are represented by the 'Other' category. (Right) Alpha diversity of donor pools and recipient samples, as measured by Shannon's H index and ASV richness. Box-and-whisker plots show high, low, and median values, with lower and upper edges of each box denoting first and third quartiles, respectively. Asterisks (\*\*\*) indicate samples that significantly differed from the donor pools (Dunn's test with Bonferroni correction,  $P < 0.0125$ ).

**Additional file 5: Supplementary Figure 3.** (Left) Relative abundance of bacterial genera in *Cx. quinquefasciatus* donor pools and recipient samples. Biological replicates were pooled for the bar graphs presented. Low abundance genera (<1%) are represented by the 'Other' category. (Right) Alpha diversity of donor pools and recipient samples, as measured by Shannon's H index and ASV richness. Box-and-whisker plots show high, low, and median values, with lower and upper edges of each box denoting first and third quartiles, respectively. Asterisks (\*\*\*) indicate samples that significantly differed from the donor pools (Dunn's test with Bonferroni correction,  $P < 0.0125$ ).

**Additional file 6: Supplementary Figure 4.** Average Bray-Curtis dissimilarity between (b/w) donor pools versus between a given donor pool and recipient samples. Mean values  $\pm$  standard errors are shown. Asterisks (\*\*\*) indicate comparisons for which the average dissimilarity between a given donor pool and group of recipient samples was significantly higher than that expected as a result of the transplantation procedure itself (i.e., between donor pools) (Dunn's test with Bonferroni correction,  $P < 0.0125$ ).

**Additional file 7: Supplementary Figure 5.** Significantly negative correlation between relative abundance of ASVs belonging to the bacterial family Enterobacteriaceae and ASVs belonging to the genus *Serratia* across all recipient *Ae. aegypti* adults (Spearman's rank test,  $P < 0.05$ ).

## Acknowledgements

We thank George Golovko, Kamil Khanipov, and Maria Pimenova of the Department of Pharmacology and Toxicology, Sealy Center for Structural Biology, University of Texas Medical Branch (Galveston, TX, USA) for assistance with sequencing. We also thank the insectary staff at the University of Texas Medical Branch for assistance in rearing mosquitoes.

## Authors' contributions

KLC, SH, and GLH conceived and designed the experiments. SH performed the experiments. KLC carried out the data analysis. KLC wrote the initial manuscript, and SH and GLH contributed to revisions. The authors read and approved the final manuscript.

## Funding

GLH and KLC were supported by an NIH grant (R21AI138074). Additional support to KLC was provided by the NSF (2019368), the USDA NIFA (2018-67012-28009), and the University of Wisconsin-Madison. Additional support to GLH was provided by the NIH (R21AI129507), the BBSRC (BB/T001240/1, V011278/1, and BB/W018446/1), the UKRI (20197 and 85336), the EPSRC (V043811/1), a Royal Society Wolfson Fellowship (RSWF\R1\180013), and the NIHR (NIHR2000907). SH was supported by a James W. McLaughlin postdoctoral fellowship from the University of Texas Medical Branch and a Liverpool School of Tropical Medicine Director's Catalyst Fund award. The views expressed herein are those of the author(s) and do not necessarily reflect those of any agency of the US or UK government.

## Availability of data and materials

Raw Illumina reads are available in the NCBI Sequence Read Archive (<http://www.ncbi.nlm.nih.gov/sra>) under BioProject ID PRJNA767109. Input files for the QIIME pipeline as well as raw data files and R code for statistical analyses have been deposited in the Dryad Digital Repository: (<https://doi.org/10.5061/dryad.5qfttdz7m>).

## Declarations

### Ethics approval and consent to participate

Not applicable.

### Consent for publication

Not applicable.

### Competing interests

The authors declare that they have no competing interests.

Received: 26 October 2021 Accepted: 7 March 2022

Published online: 11 April 2022

## References

- Kohl KD, Weiss RB, Cox J, Dale C, Dearing MD. Gut microbes of mammalian herbivores facilitate intake of plant toxins. *Ecol Lett.* 2014;17:1238–46.
- Chevalier C, Stojanović O, Colin DJ, Suarez-Zamorano N, Tarallo V, Veyrat-Durebex C, et al. Gut microbiota orchestrates energy homeostasis during cold. *Cell.* 2015;163:1360–74.
- Sommer F, Ståhlman M, Ilkayeva O, Arnemo JM, Kindberg J, Josefsson J, et al. The gut microbiota modulates energy metabolism in the hibernating brown bear *Ursus arctos*. *Cell Rep.* 2016;14:1655–61.
- Lee STM, Kahn SA, Delmont TO, Shaiber A, Esen ÖC, Hubert NA, et al. Tracking microbial colonization in fecal microbiota transplantation experiments via genome-resolved metagenomics. *Microbiome.* 2017;5:50.
- Hu J, Chen L, Tang Y, Xie C, Xu B, Shi M, et al. Standardized preparation for fecal microbiota transplantation in pigs. *Front Microbiol.* 2018;9:1328.
- Blyton MDJ, Soo RM, Whisson D, Marsh KJ, Pascoe J, Le Pla M, et al. Faecal inoculations alter the gastrointestinal microbiome and allow dietary expansion in a wild specialist herbivore, the koala. *Animal Microbiome.* 2019;1:6.
- Clements AN. The biology of mosquitoes, volume 1: development, nutrition, and reproduction. New York: Chapman & Hall; 1992.

8. Foster WA. Mosquito sugar feeding and reproductive energetics. *Ann Rev Entomol.* 1995;40:443–74.
9. Vogel KJ, Coon KL. Functions and mechanisms of symbionts of insect disease vectors. In: Oliver KM, Russell JA, editors. *Advances in Insect Physiology*, vol. 58. London: Academic Press; 2020. p. 233–75.
10. Coon KL, Vogel KJ, Brown MR, Strand MR. Mosquitoes rely on their gut microbiota for development. *Mol Ecol.* 2014;23:2727–39.
11. Gimonneau G, Tchioffo MT, Abate L, Boissiere A, Awono-Ambene PH, Nsango SE, et al. Composition of *Anopheles coluzzii* and *Anopheles gambiae* microbiota from larval to adult stages. *Infect Genet Evol.* 2014;28:715–24.
12. Coon KL, Brown MR, Strand MR. Mosquitoes host communities of bacteria that are essential for development but vary greatly between local habitats. *Mol Ecol.* 2016;25:5806–26.
13. Bascuñán P, Niño-García JP, Galeano-Castañeda Y, Serre D, Correa MM. Factors shaping the gut bacterial community assembly in two main Colombian malaria vectors. *Microbiome.* 2018;6:148.
14. Wang Z, Liu T, Wu Y, Zhong D, Zhou G, Su Z, et al. Bacterial microbiota assemblage in *Aedes albopictus* mosquitoes and its impacts on larval development. *Mol Ecol.* 2018;27:2972–85.
15. Moll RM, Romoser WS, Modrzakowski MC, Moncayo AC, Lerdthusnee K. Meconial peritrophic membranes and the fate of midgut bacteria during mosquito (Diptera: Culicidae) metamorphosis. *J Med Entomol.* 2001;38:29–32.
16. Moncayo A, Lerdthusnee K, Leon R, Robich R, Romoser W. Meconial peritrophic matrix structure, formation, and meconial degeneration in mosquito pupae/pharate adults: histological and ultrastructural aspects. *J Med Entomol.* 2005;42:939–44.
17. Briegel H. Physiological bases of mosquito ecology. *J Vector Ecol.* 2003;28:1–11.
18. Walker ED, Olds EJ, Merritt RW. Gut content analysis of mosquito larvae (Diptera: Culicidae) using DAPI stain and epifluorescence microscopy. *J Med Entomol.* 1988;25:551–4.
19. Merritt RW, Olds EJ, Walker ED. Natural food and feeding ecology of larval *Coquillettidia perturbans*. *J Am Mosq Control Assoc.* 1990;6:35–42.
20. Gusmão D, Santos A, Marini D, Bacci M, Berbert-Molina M, Lemos F. Culture dependent and culture-independent characterization of microorganisms associated with *Aedes aegypti* (Diptera: Culicidae) (L.) and dynamics of bacterial colonization in the midgut. *Acta Trop.* 2010;115:275–81.
21. Vogel KJ, Valzania L, Coon KL, Brown MR, Strand MR. Transcriptome sequencing reveals large-scale changes in axenic *Aedes aegypti* larvae. *PLoS Negl Trop Dis.* 2017;11:e0005273.
22. Favia G, Ricci I, Damiani C, Raddadi N, Crotti E, Marzorati M, et al. Bacteria of the genus *Asaia* stably associate with *Anopheles stephensi*, an Asian malarial mosquito vector. *Proc Natl Acad Sci USA.* 2007;104:9047–51.
23. Damiani C, Ricci I, Crotti E, Rossi P, Rizzi A, Scuppa P, et al. Paternal transmission of symbiotic bacteria in malaria vectors. *Curr Biol.* 2008;18:R1087–8.
24. Crotti E, Damiani C, Pajoro M, Gonella E, Rizzi A, Ricci I, et al. *Asaia*, a versatile acetic acid bacterial symbiont, capable of cross-colonizing insects of phylogenetically-distant genera and orders. *Environ Microbiol.* 2009;11:3252–64.
25. Wang S, Dos-Santos ALA, Huang W, Liu KC, Oshaghi MA, Wei G, et al. Driving mosquito refractoriness to *Plasmodium falciparum* with engineered symbiotic bacteria. *Science.* 2017;357:1399–402.
26. Yen JH. Transovarial transmission of Rickettsia-like microorganisms in mosquitoes. *Ann NY Acad Sci.* 1975;266:152–61.
27. De Almeida F, Moura AS, Cardoso AF, Winter CE, Bijovsky AT, Suesdek L. Effects of *Wolbachia* on fitness of *Culex quinquefasciatus* (Diptera: Culicidae). *Infect Genet Evol.* 2011;11:2138–43.
28. Gloria-Soria A, Chiodo TG, Powell JR. Lack of evidence for natural *Wolbachia* infections in *Aedes aegypti* (Diptera: Culicidae). *J Med Entomol.* 2018;55:1354–6.
29. Ant TH, Herd C, Louis F, Failloux AB, Sinkins SP. *Wolbachia* transinfections in *Culex quinquefasciatus* generate cytoplasmic incompatibility. *Insect Mol Biol.* 2020;29:1–8.
30. Ross PA, Callahan AG, Yang Q, Jasper M, Arif MAK, Afizah AN, et al. An elusive endosymbiont: does *Wolbachia* occur naturally in *Aedes aegypti*? *Ecol Evol.* 2020;10:1581–91.
31. Walker T, Quek S, Jeffries CL, Bandibabone J, Dhokiya V, Bamou R, et al. Stable high-density and maternally inherited *Wolbachia* infections in *Anopheles moucheti* and *Anopheles demeilloni* mosquitoes. *Curr Biol.* 2021;31:2310–20.
32. Quek S, Cerderia L, Jeffries CL, Tomlinson S, Walker T, Hughes GL, et al. *Wolbachia* endosymbionts in two *Anopheles* species indicates independent acquisitions and lack of prophage elements. *bioRxiv.* 2021. <https://doi.org/10.1101/2021.11.15.468614>.
33. Coon KL, Brown MR, Strand MR. Gut bacteria differentially affect egg production in the anautogenous mosquito *Aedes aegypti* and facultatively autogenous mosquito *Aedes atropalpus* (Diptera: Culicidae). *Parasit Vectors.* 2016;9:1–12.
34. Valzania L, Martinson VG, Harrison RE, Boyd BM, Coon KL, Brown MR, et al. Both living bacteria and eukaryotes in the mosquito gut promote growth of larvae. *PLoS Negl Trop Dis.* 2018;12:e0006638.
35. Wang Y, Eum JH, Harrison RE, Valzania L, Yang X, Johnson JA, et al. Riboflavin instability is a key factor underlying the requirement of a gut microbiota for mosquito development. *Proc Natl Acad Sci USA.* 2021;118:e2101080118.
36. Ramirez JL, Short SM, Bahia AC, Saraiva RG, Dong Y, Kang S, et al. *Chromobacterium* Csp\_P reduces malaria and dengue infection in vector mosquitoes and has entomopathogenic and in vitro anti-pathogen activities. *PLoS Pathog.* 2014;23:e1004398.
37. Wei G, Lai Y, Wang G, Chen H, Li F, Wang S. Insect pathogenic fungus interacts with the gut microbiota to accelerate mosquito mortality. *Proc Natl Acad Sci USA.* 2017;114:5994–9.
38. Dada N, Sheth M, Liebman K, Pinto J, Lenhart A. Whole metagenome sequencing reveals links between mosquito microbiota and insecticide resistance in malaria vectors. *Sc Rep.* 2018;8:2084.
39. Gaio AD, Gusmão DS, Santos AV, Berbert-Molina MA, Pimenta PFF, Lemos FJA. Contribution of midgut bacteria to blood digestion and egg production in *Aedes aegypti* (Diptera: Culicidae) (L.). *Parasit Vectors.* 2011;4:105.
40. Hegde S, Rasgon JL, Hughes GL. The microbiome modulates arbovirus transmission in mosquitoes. *Curr Opin Virol.* 2015;15:97–102.
41. Saldaña MA, Hegde S, Hughes GL. Microbial control of arthropod-borne disease. *Mem Inst Oswaldo Cruz.* 2017;112:81–93.
42. Cansado-Utrilla C, Zhao SY, McCall PJ, Coon KL, Hughes GL. The microbiome and mosquito vectorial capacity: rich potential for discovery and translation. *Microbiome.* 2021;9:111.
43. Huang W, Wang S, Jacobs-Lorena M. Use of microbiota to fight mosquito-borne disease. *Front Genet.* 2020;11:196.
44. Rawls JF, Mahowald MA, Ley RE, Gordon JI. Reciprocal gut microbiota transplants from zebrafish and mice to germ-free recipients reveal host habitat selection. *Cell.* 2006;127:423–33.
45. Näpflin K, Schmid-Hempel P. Immune response and gut microbial community structure in bumblebees after microbiota transplants. *Proc Biol Sci.* 2016;283:20160312–8.
46. Moghadam NN, Thorshauge PM, Kristensen TN, de Jonge N, Bahrndorff S, Kjeldal H, et al. Strong responses of *Drosophila melanogaster* microbiota to developmental temperature. *Fly.* 2018;12:1–12.
47. Van Opstal EJ, Bordenstein SR. Phylosymbiosis impacts adaptive traits in *Nasonia* wasps. *mBio.* 2019;10:e00887–19.
48. Song X, Wang M, Zhu H, Wang J. PGRP-LD mediates *A. stephensi* vector competency by regulating homeostasis of microbiota-induced peritrophic matrix synthesis. *PLoS Pathog.* 2018;14:e1006899.
49. Bai L, Wang L, Vega-Rodríguez J, Wang G, Wang S. A gut symbiotic bacterium *Serratia marcescens* renders mosquito resistance to *Plasmodium* infection through activation of mosquito immune responses. *Front Microbiol.* 2019;10:1580.
50. Wu P, Sun P, Nie K, Zhu Y, Shi M, Xiao C, et al. A gut commensal bacterium promotes permissiveness to arboviruses. *Cell Host Microbe.* 2019;25:101–12.
51. Gendrin M, Rodgers FH, Yerbanga RS, Ouédraogo JB, Basáñez MG, Cohuet A, et al. Antibiotics in ingested human blood affect the mosquito microbiota and capacity to transmit malaria. *Nat Commun.* 2015;6:5921.
52. Ballard JWO, Melvin RG. Tetracycline treatment influences mitochondrial metabolism and mtDNA density two generations after treatment in *Drosophila*. *Insect Mol Biol.* 2007;16:799–802.
53. Ridley EV, Wong CAN, Douglas AE. Microbe-dependent and nonspecific effects of procedures to eliminate the resident microbiota from *Drosophila melanogaster*. *Appl Environ Microbiol.* 2013;79:3209–14.

54. Moullan N, Mouchiroud L, Wang X, Ryu D, Williams EG, Mottis A, et al. Tetracyclines disturb mitochondrial function across eukaryotic models: a call for caution in biomedical research. *Cell Rep*. 2015;10:1681–91.
55. Chabanol E, Behrends V, Prévot G, Christophides GK, Gendrin M. Antibiotic treatment in *Anopheles coluzzii* affects carbon and nitrogen metabolism. *Pathogens*. 2020;9:679.
56. Chouaib B, Rossi P, Epis S, Mosca M, Ricci I, Damiani C, et al. Delayed larval development in *Anopheles* mosquitoes deprived of *Asaia* bacterial symbionts. *BMC Microbiol*. 2012;12:52.
57. Bahia AC, Dong Y, Blumberg BJ, Mlambo G, Tripathi A, BenMarzouk-Hidalgo OJ, et al. Exploring *Anopheles* gut bacteria for *Plasmodium* blocking activity. *Environ Microbiol*. 2014;16:2980–94.
58. Kozlova EV, Hegde S, Roundy CM, Golovko G, Saldaña MA, Hart CE, et al. Microbial interactions in the mosquito gut determine *Serratia* colonization and blood feeding propensity. *ISME J*. 2020;15:93–108.
59. Munderloh UG, Kurtz TJ, Maramorosch K. *Anopheles stephensi* and *Toxorhynchites amboinensis*: aseptic rearing of mosquito larvae on cultured cells. *J Parasitol*. 1982;68:1085–91.
60. Correa MA, Matusovsky B, Brackney DE, Steven B. Generation of axenic *Aedes aegypti* demonstrate live bacteria are not required for mosquito development. *Nat Comm*. 2018;9:R37.
61. Romoli O, Schönbeck JC, Hapfelmeier S, Gendrin M. Production of germ-free mosquitoes via transient colonisation allows stage-specific investigation of host microbiota interactions. *Nature Comm*. 2021;12:942.
62. Coon KL, Valzania L, McKinney DA, Vogel KJ, Brown MR, Strand MR. Bacteria mediated hypoxia functions as a signal for mosquito development. *Proc Natl Acad Sci USA*. 2017;114:E5362–9.
63. Hegde S, Khanipov K, Albayrak L, Golovko G, Pimenova M, Saldaña MA, et al. Microbiome interaction networks and community structure from laboratory-reared and field-collected *Aedes aegypti*, *Aedes albopictus*, and *Culex quinquefasciatus* mosquito vectors. *Front Microbiol*. 2018;9:715.
64. Valzania L, Coon KL, Vogel KJ, Brown MR, Strand MR. Hypoxia-induced transcription factor signaling is essential for larval growth of the mosquito *Aedes aegypti*. *Proc Natl Acad Sci USA*. 2018;115:457–65.
65. Herlemann DPR, Labrenz M, Jürgens K, Bertilsson S, Wanek JJ, Andersson AF. Transitions in bacterial communities along the 2000 km salinity gradient of the Baltic Sea. *ISME J*. 2011;5:1571–9.
66. Bolyen E, Rideout JR, Dillon MR, Bokulich NA, Abnet CC, Al-Ghalith GA, et al. Reproducible, interactive, scalable and extensible microbiome data science using QIIME 2. *Nat Biotechnol*. 2019;37:852–7.
67. Callahan BJ, McMurdie PJ, Rosen MJ, Han AW, Johnson AJA, Holmes SP. DADA2: high-resolution sample inference from Illumina amplicon data. *Nat Methods*. 2016;13:581–3.
68. McDonald D, Prince MN, Goodrich J, Nawrocki EP, DeSantis TZ, Probst A, et al. An improved Greengenes taxonomy with explicit ranks for ecological and evolutionary analyses of bacteria and archaea. *ISME J*. 2011;6:610–8.
69. Werner JJ, Koren O, Hugenholtz P, DeSantis TZ, Walters WA, Caporaso JG, et al. Impact of training sets on classification of high throughput bacterial 16S rRNA gene surveys. *ISME J*. 2012;6:94–103.
70. Price MN, Dehal PS, Arkin AP. FastTree 2 – approximately maximum-likelihood trees for large alignments. *PLoS One*. 2010;5:e9490.
71. Katoh K, Standley DM. MAFFT multiple sequence alignment software version 7: improvements in performance and usability. *Mol Biol Evol*. 2013;30:772–80.
72. DeSantis TZ, Hugenholtz P, Larsen N, Rojas M, Brodie EL, Keller K, et al. Greengenes, a chimera-checked 16S rRNA gene database and workbench compatible with ARB. *Appl Environ Microbiol*. 2006;72:5069–72.
73. Zouache K, Raharimalala FN, Raquin V, Tran-Van V, Raveloson LHR, Ravelonandro P, et al. Bacterial diversity of field-caught mosquitoes, *Aedes albopictus* and *Aedes aegypti*, from different geographic regions of Madagascar. *FEMS Microbiol Ecol*. 2011;75:377–89.
74. Boissière A, Tchioffo MT, Bachar D, Abate L, Marie A, Nsango SE, et al. Midgut microbiota of the malaria mosquito vector *Anopheles gambiae* and interactions with *Plasmodium falciparum* infection. *PLoS Pathog*. 2012;8:e1002742.
75. Buck M, Nilsson LK, Brunius C, Dabire RK, Hopkins R, Terenius O. Bacterial associations reveal spatial population dynamics in *Anopheles gambiae* mosquitoes. *Sci Rep*. 2016;10:22806.
76. Muturi EJ, Lagos-Kutz D, Dunlap C, Ramirez JL, Rooney AP, Hartman GL. Mosquito microbiota cluster by host sampling location. *Parasit Vectors*. 2018;11:468.
77. Tchioffo MT, Boissière A, Abate L, Nsango SE, Bayibéki AN, Awono-Ambéné PH, et al. Dynamics of bacterial community composition in the malaria mosquito's epithelia. *Front Microbiol*. 2016;5:1500.
78. Dickson LB, Ghazlane A, Volant S, Bouchier C, Ma L, Vega-Rúa A, et al. Diverse laboratory colonies of *Aedes aegypti* harbor the same adult midgut bacterial microbiome. *Parasit Vectors*. 2018;11:207.
79. Wang Y, Gilbreath TM, Kukutla P, Yan G, Xu J. Dynamic gut microbiome across life history of the malaria mosquito *Anopheles gambiae* in Kenya. *PLoS One*. 2011;6:e24767.
80. Osei-Poku J, Mbogo CM, Palmer WJ, Jiggins FM. Deep sequencing reveals extensive variation in the gut microbiota of wild mosquitoes from Kenya. *Mol Ecol*. 2012;21:5138–50.
81. Duguma D, Hall MW, Rugman-Jones P, Stouthamer R, Terenius O, Neufeld JD, et al. Developmental succession of the microbiome of *Culex* mosquitoes. *BMC Microbiol*. 2015;15:140.
82. Muturi EJ, Kim C, Bara J, Bach EM, Siddappaji MH. *Culex pipiens* and *Culex restuans* mosquitoes harbor distinct microbiota dominated by few bacterial taxa. *Parasit Vectors*. 2016;9:18.
83. Muturi EJ, Ramirez JL, Rooney AP, Kim CH. Comparative analysis of gut microbiota of mosquito communities in central Illinois. *PLoS Negl Trop Dis*. 2017;11:e0005377.
84. Thongsripong P, Chandler JA, Green AB, Kittyapong P, Wilcox BA, Kapan DD, et al. Mosquito vector-associated microbiota: metabarcoding bacteria and eukaryotic symbionts across habitat types in Thailand endemic for dengue and other arthropod-borne diseases. *Ecol Evol*. 2017;8:1352–68.
85. Charan SS, Pawar KD, Severson DW, Patole MS, Shouche YS. Comparative analysis of midgut bacterial communities of *Aedes aegypti* mosquito strains varying in vector competence to dengue virus. *Parasitol Res*. 2013;112:2627–37.
86. Short SM, Mongodin EF, MacLeod HJ, Talyuli OAC, Dimopoulos G. Amino acid metabolic signaling influences *Aedes aegypti* midgut microbiome variability. *PLoS Negl Trop Dis*. 2017;11:e0005677.
87. Tawidian P, Rhodes VL, Michel K. Mosquito-fungus interactions and antifungal immunity. *Insect Biochem Mol Biol*. 2019;111:103182.
88. Patterson EI, Villinger J, Muthoni JN, Döbel-Ober L, Hughes GL. Exploiting insect-specific viruses as a novel strategy to control vector-borne disease. *Curr Opin Insect Sci*. 2020;39:50–6.

## Publisher's Note

Springer Nature remains neutral with regard to jurisdictional claims in published maps and institutional affiliations.

Ready to submit your research? Choose BMC and benefit from:

- fast, convenient online submission
- thorough peer review by experienced researchers in your field
- rapid publication on acceptance
- support for research data, including large and complex data types
- gold Open Access which fosters wider collaboration and increased citations
- maximum visibility for your research: over 100M website views per year

At BMC, research is always in progress.

Learn more [biomedcentral.com/submissions](https://biomedcentral.com/submissions)

