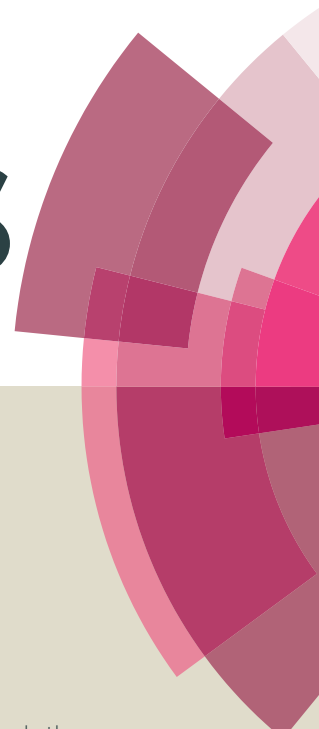


RSC Advances



This article can be cited before page numbers have been issued, to do this please use: V. Khare, W. Al Shakarchi, P. Gupta, A. Curtis and C. Hoskins, *RSC Adv.*, 2016, DOI: 10.1039/C6RA09347G.



This is an *Accepted Manuscript*, which has been through the Royal Society of Chemistry peer review process and has been accepted for publication.

Accepted Manuscripts are published online shortly after acceptance, before technical editing, formatting and proof reading. Using this free service, authors can make their results available to the community, in citable form, before we publish the edited article. This *Accepted Manuscript* will be replaced by the edited, formatted and paginated article as soon as this is available.

You can find more information about *Accepted Manuscripts* in the [Information for Authors](#).

Please note that technical editing may introduce minor changes to the text and/or graphics, which may alter content. The journal's standard [Terms & Conditions](#) and the [Ethical guidelines](#) still apply. In no event shall the Royal Society of Chemistry be held responsible for any errors or omissions in this *Accepted Manuscript* or any consequences arising from the use of any information it contains.

Synthesis and Characterization of TPGS-Gemcitabine Prodrug Micelles for Pancreatic Cancer Therapy

Vaibhav Khare^{1,2}, Wejdan Al. Sakarchi¹, P.N. Gupta², Anthony D.M. Curtis¹, Clare Hoskins¹

1. Institute of Science and Technology in Medicine, Keele University, Keele, Staffordshire, United Kingdom, ST55BJ

2. Formulation and Drug Delivery Division, CSIR-Indian Institute of Integrative Medicine, Canal Road, Jammu, India 180001



Abstract

The therapeutic potential of a nucleoside analog, gemcitabine, is severely compromised due to its rapid clearance from systemic circulation by enzymatic degradation into inactive metabolite. In the present investigation, micelles based on polymer-drug conjugate were developed for gemcitabine and investigated for their potential to improve cancer chemotherapy. The tocopherol poly(ethylene glycol) succinate 1000 (TPGS)-Gemcitabine prodrug was synthesized *via* amide linkage and characterised by analytical methods, including FT-IR, ¹H-NMR, and MALDI-TOF. The micellar formulation of TPGS-Gemcitabine prodrug was developed by self-assembly technique and evaluated for various physicochemical parameters including particle size, polydispersity, morphology, critical micelle concentration and release profile. It was shown observed that gemcitabine present in TPGS-Gemcitabine micelles were resistant to deamination from crude cytidine deaminase. The improved cytotoxicity of the micellar formulation was observed by TPGS-Gemcitabine micelles against pancreatic cancer cells. Further, it was investigated that unlike native gemcitabine, the nucleoside transporters were not required for TPGS-Gem micelles to demonstrate its anticancer potential. These findings revealed that TPGS-Gemcitabine micelles may serve as a promising platform for gemcitabine in order to improve its anticancer efficacy.

Keywords: gemcitabine, TPGS, prodrug, micelles, pancreatic cancer



1. Introduction

Pancreatic cancer is known as the most lethal malignant disease¹. Despite the therapeutic advances, 80–85% of cases were detected in highly metastasis state, and complicated to treat with a median survival of <6 months². The anatomy and biology of pancreatic cancer also conspire to elude detection and resist eradication³. Gemcitabine is a strong cytidine analog approved by FDA for the management of pancreatic cancer and variety of solid tumours⁴. At present, gemcitabine is used as single agent for therapy of advanced pancreatic cancer and is the most prescribed anticancer drug worldwide, in spite of growing resistance^{5,6}. In the recent years, several trials demonstrated the efficacy of targeted therapy or combination chemotherapy, however, none of them changed the practice of gemcitabine monotherapy^{7,8}. Moreover, the clinical efficacy of gemcitabine also compromised by its rapid clearance through enzymatic metabolism driven by cytidine deaminase (CDA), which is ubiquitously expressed in the liver and blood plasma^{9,10}. The high degree of hydrophilicity of gemcitabine further decreases its efficacy by restricting its permeation of the dense vasculature exterior of the tumour. Therefore, a high drug dose is required to achieve therapeutic concentration or desired effect, which causes serious side effects.

Many efforts have been employed to advance the efficiency of gemcitabine, including nanoparticles^{11,12}, liposomes^{13,14}, micelles^{15,16}, polymer-drug conjugates (Prodrugs)^{17,18}. Besides other efforts, gemcitabine prodrugs received a constant recognition for its enhance metabolic stability, improved cellular uptake or cytotoxicity and to limit the resistance. Various chemically modified prodrugs of gemcitabine were reported either employing hydrophilic polymers, includes polyethylene glycol (PEG)¹⁸ and poly-glutamic acid (PGA)¹⁹ or lipophilic agents such as linoleic acid²⁰ and squalene²¹. Moreover, amphiphilic polymer-drug conjugates or



lipophilic prodrug conjugates are more attractive due to their self-assembling characteristics into nano-micelles upon dilution with water. Micelles, based on polymer-drug conjugate (prodrug) is an exciting development of polymeric drug delivery systems and have dual benefits arising from the polymer-drug conjugate itself as well as the properties gained from micellar formulations. Various gemcitabine formulations based on an amphiphilic polymers or lipid-based micelles have been reported to possess improved efficacy of gemcitabine. Chitkara *et al.*²² reported gemcitabine conjugated poly(ethylene glycol)-block-poly(2-methyl-2-carboxyl-propylenecarbonate) (PEG-PCC) self-assembled micelles improves plasma stability and *in-vivo* efficacy of gemcitabine against MiaPaCa-2 cells derived xenograft tumour in mice. In another study, Daman *et al.*¹⁵ compared the *in-vitro* efficacy of 4-(N)-stearoyl gemcitabine (GemC18) loaded PEG-PLGA micelles and 4-(N)-stearoyl gemcitabine self-assembled micelles against pancreatic cancer and reported the higher efficacy of self-assembled 4-(N)-stearoyl gemcitabine micelles. Recently, Han *et al.*²³ demonstrated the high cytotoxicity of gemcitabine conjugated PEG-b-[PLA-co-PMAC-graft-(IR820-co-GEM)] self-assembled theranostic micelles in BxPC-3 cells and higher accumulation in the tumour tissue.

To extend this concept of self-assembled micelles based on amphiphilic polymer-drug conjugate, in the present investigation, we have designed a gemcitabine prodrug in which drug is conjugated with such amphiphilic polymer, which possesses additional therapeutic values. D-alpha-tocopherol polyethylene glycol succinate (TPGS) was used as an amphiphilic polymer to synthesize gemcitabine prodrug. TPGS is an amphiphilic derivative of natural vitamin E (α -tocopherol), synthesized by grafting α -tocopherol with polyethylene glycol oligomer *via* a succinate linker and gained interest in the development of drug delivery systems²⁴. TPGS has been permitted by FDA as a drug solubiliser, in a variety of formulations and listed as a GRAS



(generally referred as safe) supplement, also used as an absorption enhancer and stabiliser^{25, 26}. It has been reported that TPGS acts as an anticancer agent alone or synergistically with chemotherapeutic drugs²⁷⁻³¹. Recently, Neophytou *et al.* investigated that the intrinsic anticancer activity of TPGS is due to the inhibition of phospho-AKT and the downregulation of the anti-apoptotic proteins survivin and Bcl-2²⁷. In addition, it has been reported that the inhibition of survivin expression in pancreatic cancer could potentiate the activity of gemcitabine significantly^{32, 33}.

Previously we have investigated the potential of poly(lactide-co-glycolide)-gemcitabine prodrug conjugate in an attempt to improve the efficacy of gemcitabine.¹⁷ In this work, we synthesized TPGS-Gemcitabine (TPGS-Gem) prodrug to protect the drug from enzymatic metabolism. The TPGS-Gem prodrug was characterized for self-assembly properties to explore their potential as drug delivery carrier for improved efficacy of gemcitabine.

2. Experimental

2.1 Materials

Gemcitabine was purchased from Fluorochem (UK). Tocopherol poly(ethylene glycol) succinate 1000, dimethylamino pyridine, succinic anhydride, N-hydroxysuccinimide (NHS), N, N'-di-cyclohexyl carbodiimide (DCC), dry dichloromethane, diethyl ether and ethanol were purchased from Sigma-Aldrich (UK). MTT (3-(4,5-Dimethylthiazol-2-yl)-2,5-Diphenyltetrazolium Bromide) was purchased from Santa Cruz Biotechnology (Santa Cruz, CA). Recombinant human cytidine deaminase (specific activity 3.5unit/mg) was obtained from ProSpec (USA). The human pancreatic cancer cells (BxPC-3) were procured from European Collection of Cell Cultures (ECACC, LGC Standards, UK) and grown in complete growth medium, Roswell Park Memorial



Institute medium (RPMI) supplemented with 10% fetal bovine serum and 1% penicillin streptomycin procured from Gibco BRL (Life Technologies, UK).

2.2 Synthesis of TPGS-Gemcitabine prodrug

The TPGS-Gem prodrug was synthesized in a two-step process. The first step involves functionalization of TPGS with the terminal free carboxyl group by esterification through succinic anhydride (SA) and a catalytic amount of dimethylamino pyridine (DMAP)³⁴. Subsequently, the second step involves the amidation of an amino group on gemcitabine with functionalised carboxyl group of TPGS. The schematic illustration of the synthetic route is shown in Figure-1. In brief, TPGS (1 equivalent), succinic anhydride (2 equivalent), and dimethylamino pyridine (1 equivalent) were dissolved in dry dichloromethane (DCM) and reacted under a nitrogen atmosphere for 24 h at room temperature (RT). The reaction mixture was filtered and precipitated in cold diethyl ether and dried under vacuum. The precipitated product was taken up in DCM and dialyzed (Pur-A-Lyzer dialysis kit, MWCO 1000, Sigma) against 50:50 mixture of ethanol: water for 72 h to remove excess amount of DMAP and SA. The TPGS-SA was dried under vacuum and stored at -20 °C until further use.

The conjugation of the amino group of gemcitabine and carboxyl group of TPGS-SA was achieved by classical carbodiimide coupling reaction. In brief, TPGS-SA (1 equivalent), di-cyclohexyl carbodiimide (DCC, 2 equivalent), N-hydroxy-succinimide (NHS, 2 equivalent) was dissolved in anhydrous DMSO and reacted for 24 h at RT under nitrogen conditions. The reaction was filtered using 0.45 µm syringe filter, to remove the by-product N, N-dicyclohexylurea. The filtrate was mixed with a solution containing gemcitabine (2 equivalent of TPGS-SA) and triethylamine (2 equivalent) in DMSO and kept under stirring for further 24 h in a nitrogen environment at RT. The reaction mixture was dialysed (Pur-A-Lyzer dialysis kit,



MWCO 1000, Sigma) against DMSO to remove unreacted gemcitabine for 24 h. Afterward, the dialyzing media was replaced by water to remove DMSO and reaction mixture was freeze-dried to obtain TPGS-Gem prodrug.

2.3 Characterization of TPGS-Gemcitabine prodrug

The conjugation between TPGS and gemcitabine was validated by different analytical methods including Fourier transform infrared (FT-IR) spectroscopy and nuclear magnetic resonance (NMR) spectroscopy and MALDI-TOF spectroscopy. The FT-IR spectra for TPGS, TPGS-SA gemcitabine and TPGS-Gem prodrug were recorded from Perkin Elmer, FT-IR spectrometer. Neat samples were analyzed to detect IR bands over a range 3500-800 cm^{-1} . $^1\text{H-NMR}$ spectrum of native gemcitabine, TPGS, TPGS-SA, and TPGS-Gem, were acquired on a Bruker DRX 300 MHz NMR spectrometer. Tetramethylsilane was used as an internal standard. A mass spectrum of native TPGS, TPGS-SA, and TPGS-Gem were obtained by MALDI-TOF (Applied Biosystems/AB Sciex) equipped with ND-YAG diode pump laser (355 nm/200 Hz). The instrument was run in a positive ion reflection mode using CHCA (a-cyano-p-hydroxycinnamic acid) as a matrix. Respective peptide standards were used to calibrate the mass range. The spectra were recorded in the range of 800 to 2400 Da.

2.4 RP-HPLC analysis

The content of gemcitabine conjugated to TPGS-gemcitabine prodrug was determined using RP-HPLC method³⁵. Alkaline hydrolysis was performed in KOH 0.1 N to separate the native gemcitabine from TPGS moiety. In brief, 1mg/ml concentration of TPGS-Gem was incubated with 0.1 N of KOH at 40 $^{\circ}\text{C}$ for 1 h. Samples were appropriately diluted with acetonitrile and the amount of gemcitabine quantified by HPLC (Perkin Elmer) analysis. The samples were analyzed using HPLC equipped with RP-18 column (E-Merck, 5 μm , 4.0 x 250mm) with PDA detector.



Acetonitrile and 0.02 M ammonium acetate buffer (1:1) was used as mobile phase at flow rate 0.5 ml/min. The detection wavelength (λ_{\max}) for gemcitabine was 268 nm and retention time of gemcitabine was found to be 4.08 min.

2.5 Preparation of TPGS-Gemcitabine prodrug micelles

TPGS-Gem prodrug micelle was prepared by a simple solvent evaporation method with minor modifications³⁶. Briefly, 30 mg of TPGS-Gem prodrug was solubilized in 1.5 ml of ethanol and added drop-wise to 15 ml of ultra-purified water under stirring. The solution was stirred gently on magnetic stirrer to evaporate organic solvent. The resultant mixture was filtered by 0.45 μm poly(ethersulfone) syringe filter. For storage, the micelles were freeze dried and kept refrigerated until further use.

2.6 Micelles characterization

The average particle size, size distribution, polydispersity index (PDI) and surface charge of prepared micelles were determined through dynamic light scattering (DLS) (Zetasizer, ZS-Nano, Malvern, UK). The particle size measurement was performed using disposable poly(styrene) cells, the micelle solution was incubated at various temperatures (25-40 $^{\circ}\text{C}$) for 10 min. to attain the equilibrium. The zeta potential of micelles solution was measured using plain folded zeta cells, at 25 $^{\circ}\text{C}$ on fixed scattered light at an angle 90 $^{\circ}$. All measurements were performed in triplicate. The morphological investigation of prepared micelles was performed using JEOL JEM-1230 transmission electron microscope (JEOL, Japan). A drop of the micellar formulation was carefully placed on the formvar-coated copper grid (200 mesh) and then dried at room temperature overnight before observation on the microscope.

2.7 Critical micelle concentration using UV hydrophobic probes



The critical micelle concentration (CMC) of TPGS-Gem prodrug was investigated by UV hydrophobic probe, methyl orange, as described by Uchegbu *et al.*³⁷. In brief, a methyl orange (25 μ M) stock solution was prepared using sodium tetraborate buffer (0.02 M, pH 9.4) in deionised water. A solution of 10 mg/ml concentration of TPGS-Gem prodrug was prepared in methyl orange solution. Various concentration (0.015 mg/ml-2.5 mg/ml) of TPGS-Gem was prepared by serial dilution of prodrug solution using methyl orange stock as diluent. Each concentration was scanned in the UV-visible spectrophotometer (UV-2600, Shimadzu) between 350-600 nm and maximum absorbance (λ_{\max}) was registered. The λ_{\max} of aqueous methyl orange stock solution was recorded as control (*i.e.* 0 mg/ml surfactant). A graph was plotted between λ_{\max} vs. surfactant concentration. The CMC is identified as the inflection point (hypsochromic shift) at the beginning of the curve on the graph plotted against λ_{\max} vs. TPGS-Gem concentration.

2.8 *In vitro* drug release

In vitro drug release study of TPGS-Gem micelles was performed in buffer solution with pH 7.4 at various temperatures *i.e.* 30, 37 and 40 $^{\circ}$ C. In brief, 3 ml of TPGS-Gem micelle solution was placed in a dialysis bag (MWCO 1000) and immersed with 20 ml of buffer solutions in a shaker incubator at temperature 30, 37 and 40 $^{\circ}$ C. At scheduled time intervals, 100 μ l of the sample was collected from buffer solution and replaced with the same amount of fresh buffer of the same temperature. The collected samples were analyzed by validated RP-HPLC method reported above. Experiments were performed in triplicates for up to one week.

2.9 Stability studies with cytidine deaminase

The TPGS-Gem micelles and native gemcitabine were exposed to cytidine deaminase, in order to evaluate the metabolism triggered by the enzyme. Briefly, 0.4 mM concentration of TPGS-Gem



micelles and gemcitabine were prepared in 0.1 M Tris buffer (pH 7.5) with respect to gemcitabine concentration. The reactions were initiated by addition of 10 μ l of recombinant human cytidine deaminase, dissolved 20 mM Tris-buffer, 2 mM EDTA and 40% glycerol in 1 ml of each solution. At various time points, 60 μ l of aliquots were collected mixed with 30 μ l of acetonitrile to terminate the enzyme activities. The solvent of the reaction mixture was evaporated using freeze drying. The dried sample was reconstituted in 100 μ l of water and analyzed by LC-MS/MS using the method described in our previous report ¹⁷.

2.10 Cell culture methods

BxPC-3 cells were cultured using RPMI medium supplemented with 10% fetal bovine serum (FBS) and 1% antibiotic (streptomycin and penicillin) solution in 50 ml cell culture flask. Cells were cultivated in a humidified incubator with 5% carbon dioxide at 37 °C. After 90% confluence level reached, cells were routinely trypsinised and subcultured.

2.11 *In vitro* cytotoxicity

For evaluation of the cytotoxic potential of TPGS-Gem micelles, MTT assay was performed in comparison with gemcitabine and placebo TPGS micelles (*i.e.* TPGS micelles with no drug conjugated, in equivalent weight as in TPGS-Gem micelles) at incubation time 24 h, 48 h, and 72 h. BxPC-3 cells were seeded for 24 h in 96 well flat bottom plates (Corning, USA) at a density of 15×10^3 cells/well in RPMI medium. Various concentrations of test samples were added to the cells and incubated for predetermined time intervals. After completion of the incubation period, the medium was replaced with 100 μ l of MTT dye to each well at 0.5 mg/ml concentration and incubated for 4 h. The degree of cell viability is expressed by translation of MTT into purple formazan crystals by metabolically viable cells. The produced formazan crystals were dissolved using 100 μ l of DMSO and optical density of wells was measured at wavelength 570 nm



spectrophotometrically (BioTek, Synergy HT). The nonlinear regression analysis was performed to determine a concentration caused a 50% inhibition in the control growth rate (IC_{50}) using Graph Pad software.

2.12 Nucleoside transporter inhibition

Gemcitabine typically enters across the cellular membrane through nucleoside transporter (hENT and/or hCNT)³⁸. Since one or more of these nucleoside transporters are essential for gemcitabine to enter the cell, we performed a nucleoside transporter inhibition assay, to investigate whether TPGS-Gem micelles also dependent on nucleoside transporter. The MTT assay was performed as mentioned above with minor changes. BxPC-3 cell suspension was seeded in 96 well flat bottom plates and incubated for 24 h. A 10 μ M concentration of dipyridamole (a nucleoside transporter inhibitor) was incubated with cells prior to sample addition to inhibiting the hENT-1 transporter. The IC_{50} values were calculated to determine the effect of inhibition of nucleoside transporters.

2.13 Cellular uptake

A cellular uptake study was performed to demonstrate the internalization of TPGS-Gem micelles in the presence and absence of nucleoside transporter inhibitor, dipyridamole. Coumarin-6 loaded TPGS-Gem micelles was prepared by same method as described for TPGS-Gem micelles, except that coumarin-6 was added in first step with the prodrug in ethanol. BxPC-3 cells were seeded onto a borosilicate glass cover slip in six well plates for 24 h. Then the media of three wells was replaced with a 10 μ M concentration of dipyridamole to inhibit the nucleoside transporters, 30 min. before the addition of test samples. Afterwards the media of all six wells was substituted with 0.125 mg/ml of coumarin-6 loaded TPGS-Gem micelles and incubated for 4 h at 37 $^{\circ}$ C in CO_2 incubator. After completion of incubation time the cells were washed twice by



PBS (pH 7.4) and fixed with 70% ethanol and the nuclei was counter stained by DAPI (4-6 diamidino-2-phenyl indole). Then the cells were observed under fluorescence cell imaging station (EVOS FLoid).

2.14 AFM topography

The effect of morphological changes was assessed after treatment with TPGS-Gem micelles, gemcitabine, and native TPGS using atomic force microscope after 24 h of incubation. BxPC-3 cells were seeded in 6 well plates over coverslips. Cells were incubated in a humidified incubator at 37 °C and 5% CO₂ atmosphere. After 24 h, the media was replaced with a 10 μM. the concentration of gemcitabine and TPGS-Gem micelles dissolved in media and incubated for 24 h. The control cells were treated with media only. Afterward, the media was removed and cells were washed abundantly with PBS and fixed using 2.5% solution of glutaraldehyde prepared in PBS for 10 min. After fixation cells were again washed 5-6 times with PBS and mounted on a glass slide. Cell topography was imaged using a Bruker Bio Catalyst atomic force microscope (Bruker, Germany) using Peak Force Tapping Mode and a Scan Asyst in air cantilever.

3. Results and Discussion

The TPGS-Gem micelle was prepared after synthesis of TPGS-Gem prodrug. The gemcitabine was conjugated to TPGS through a succinate linker as a two-step process: (I) modification of end group of TPGS to a carboxylic group using succinic anhydride and (II) coupling of activated ester form of succinic acid-modified TPGS to the amino group of gemcitabine using classical carbodiimide chemistry, as shown in Figure-1. All the reactions performed to synthesize TPGS-Gem prodrug were characterized by different analytical techniques including FT-IR, ¹H-NMR, and MALDI-TOF.

3.1 Characterization of TPGS-Gem prodrug



3.1.1 Fourier transform infrared spectra

The FT-IR spectra of native TPGS (Figure-2) showed a characteristic band on 1736 cm^{-1} is attributed to the carbonyl group present in the TPGS. In the FT-IR spectra of TPGS-SA the strong absorption of carbonyl band at 1732 cm^{-1} was observed, which confirmed the formation of TPGS-SA, these findings are in accordance with previous reports^{34, 46}. Moreover, in the FT-IR spectra of gemcitabine, the band found at 1674 cm^{-1} and 1662 cm^{-1} attributed as a characteristic amine bending vibrations. In contrast, the FT-IR spectra of TPGS-Gem prodrug showed the characteristic carbonyl band at 1734 cm^{-1} , in addition, bands at 1654 cm^{-1} and 1560 cm^{-1} represents amide I (C=O, stretching) and amide II (N-H bending), respectively, confirmed the formation of amide bond between terminal carboxyl group of TPGS and primary amino group of gemcitabine¹⁷.

3.1.2 Nuclear magnetic resonance spectroscopy

The structure of TPGS-Gem prodrug was also corroborated by ^1H NMR spectra (Figure-3). In the ^1H NMR spectrum of TPGS, the signals of ethylene protons of PEG chain, present in TPGS were observed at δ 3.5-3.6. The signals registered in the aliphatic region (δ 1-3) of spectra attributed to the various protons of Vitamin E-tail. ^1H NMR spectra of TPGS-SA showed similar signals as observed in the spectra of TPGS except succinyl methylene ($-\text{CH}_2$) protons at δ 2.6-2.7, confirmed the reaction between TPGS and succinic anhydride³⁴. In the ^1H NMR spectrum of gemcitabine, peaks at δ 8.2 correspond to the protons of a 4-amino group of gemcitabine. Other characteristic signals of 5' and 3'OH of gemcitabine was registered at δ 6.08 and 6.28 respectively²⁰. The ^1H NMR spectra of TPGS-Gem prodrug showed the characteristic ethylene protons of PEG chain at δ 3.5 with various protons of vitamin E-tail. However, the peak of the



amino group of gemcitabine was shifted from δ 8.2 to δ 11.2 suggested the formation of an amide bond between gemcitabine and TPGS^{20,40}.

3.1.3 MALDI-TOF mass spectroscopy

The MALDI-TOF spectra of TPGS, TPGS-SA and TPGS-Gem was investigated to assign the formula of various oligomeric compositions with different adduct and charge states (Figure-4). The molecular formula of TPGS forming potassium adduct was validated as $C_{33}H_{54}O_5 \cdot (CH_2CH_2O)_n + K$. In the MALDI spectrum of TPGS-SA, a marked 100 Da increment in the mass of various oligomers was observed, which is equal to the mass of succinic anhydride, suggesting the reaction between TPGS and succinic anhydride. An expected empirical formula for various oligomers of TPGS-SA forming potassium adduct could be $[C_{33}H_{53}O_5 \cdot (CH_2CH_2O)_n] \cdot CO-C_2H_4 \cdot COOH + K$. Moreover, the MALDI spectra of TPGS-Gem prodrug showed an increment of 245 Da in oligomeric clusters as compared to the oligomers of TPGS-SA, which is similar to the increment of mass if gemcitabine conjugated to TPGS-SA *via* an amide bond. However, there was no adduct (including K, Na) was seen in the oligomeric clusters of TPGS-Gem spectra. Furthermore, in the spectra of TPGS and TPGS-SA the oligomers presents in different charge state.

For instance, the reaction between TPGS oligomer with n-value 20, $[C_{33}H_{54}O_5 \cdot (CH_2CH_2O)_{20}]$, 1411 Da; or m/z 1450 in the potassium salt form] occurs with succinic acid would lead to the species at m/z 1511 (or m/z 1550 in the form of potassium salt) and further reaction with gemcitabine would lead to the species at 1757 (with no adduct formation). By comparing the spectra of TPGS, TPGS-SA and TPGS-Gem an increment of the abundance of the ion at 1550 in TPGS-SA and 1757 in the spectra of TPGS-Gem is clearly visible, confirmed the transformation of the terminal hydroxyl group to the carboxyl group at TPGS terminal end after I



step of reaction and formation of an amide bond between TPGS-SA and gemcitabine after II step. The similar behavior was noticed for all other oligomeric species. The concise table of proposed formulas of oligomeric compositions of TPGS-Gem prodrug and intermediates is given in supporting information. The conjugation of gemcitabine to TPGS is an important consideration since gemcitabine as a hydrophilic drug have very low encapsulation efficiency in polymeric nanoparticles. TPGS-Gem micelles could be used as a new strategy to deliver hydrophilic drug if the loading efficiency is high. The amount of drug conjugated to TPGS was calculated to be $36.3 \pm 2.5 \mu\text{g}/\text{mg}$ of TPGS-Gem prodrug, which is higher than our previous investigation (*i.e.* 0.124 mol of gemcitabine/mol of PLGA) in which an antiproliferative activity of PLGA-Gemcitabine polymeric conjugate was demonstrated¹⁷.

3.1.4 Micelle generation and characterization

The TPGS-Gem micelles were generated by simple solvent evaporation method as described above. The amphiphilic TPGS-Gem prodrug generates micelles by self-assembly in aqueous solution. After evaporation of the solvent, the generated micelles were characterised using various physicochemical parameters.

3.1.5 Particle size, zeta-potential and morphological analysis

The average particle diameter of TPGS-Gem prodrug was investigated upon nano-aggregation into micelles at different temperatures (25, 30, 35, 40 °C). No significant alteration was observed in the hydrodynamic diameter at selected temperatures, suggested that temperature does not influence the average particle size of micelles. An average particle size at 25 °C was measured as $15.09 \pm 0.7 \text{ nm}$ (Figure-5A) with polydispersity index, 0.078 ± 0.025 . Further at higher temperature the change in size of TPGS-Gem micelles has been observed to be negligible and the average hydrodynamic was registered as 15.67 ± 0.16 , 15.38 ± 0.34 , 15.94 ± 0.59 and PDI



0.19±0.02, 0.115±0.037, 0.153±0.032 respectively, at temperature 30 °C, 35 °C and 40 °C. The zeta potential of the micelles was evaluated as -9.3 ± 0.61 mV (Figure-5B). Particle size and zeta potential are the key factors for achieving the therapeutic efficacy of nanomedicines and micelles typically between 10 nm-100 nm are known to be favorable for drug delivery in cancer therapy⁴¹. Particles smaller than 10 nm in size will be rapidly abolished through renal clearance (threshold < 6 nm) and greater than 100 nm, have a probability to uptake by reticuloendothelial system (RES)⁴². Moreover, either neutral or anionic surface charge is considered beneficial for nanocarriers for successful evasion of renal elimination could result long circulatory action in vivo⁴³. The transmission electron microscopy (TEM) was used to determine the morphology of TPGS-Gem micelles; from which it can be seen that micelles have generally spherical shape (Figure 5C), however, a slightly bigger than the particle size was observed with DLS. The difference in the size obtained by two techniques could be due to the melting property of TPGS (melting point-38 °C). The micelles experience a certain extent of melting and expansion in size due to a high energy electron beam in TEM which makes them appear bigger in the images captured by TEM⁴⁴.

3.1.6 Critical micelle concentration

The CMC value of TPGS-Gem prodrug and native TPGS was investigated using methyl orange as a hydrophobic probe in aqueous solution by monitoring the hypsochromic shift in methyl orange UV spectra (Figure 5D). Methyl orange has λ_{\max} at 464 nm in the presence of UV light. When a surfactant was diluted in methyl orange solution, it favours the hydrophobic core formed from the micelles of the amphiphilic polymers and a hypsochromic shift was experienced at critical micelle concentration value on UV spectra of amphiphilic polymer or surfactant⁴⁵. The effect of concentration of TPGS-Gem prodrug on the peak absorption of methyl orange at λ_{\max}



464 nm is given in the Figure-5D. The native TPGS exhibited the CMC value at 0.2 mg/ml (0.02%)^{46, 47} and it was observed that the CMC value of TPGS-Gem prodrug was 0.15 mg/ml (0.015%). The lower CMC value of micelles indicated high stability, which prevents its dissociation into unimers upon dilution with large blood volume.

3.1.7 *In-vitro* drug release

The rate of gemcitabine release from TPGS-Gem micelles was evaluated in PBS buffer (pH 7.4) at various temperatures (30, 37 and 40 °C). As illustrated in Figure-6 the release of gemcitabine from prodrug micelles showed significantly slower release at 30 °C than that at 37 and 40 °C. However, a lower increment of drug release at temperature 40 °C was observed than that of drug release at 37 °C. Under all temperatures the release of gemcitabine began as an initial slow release (2.4% at 30 °C, 8.5% at 37 °C and 10% at 40 °C in 1 h) followed by a continued sustained release and exhibited a similar release pattern at all the temperatures initially. The release of gemcitabine after 48 h was 38 % at 30 °C, 59 % at 37 °C and 64 % at 40 °C and a sustained released was observed subsequently. The accumulative release at one week was measured as 58% at 30 °C, 89% at 37 °C 59% and 95% at °C. The drug release study demonstrated that TPGS-Gem micelles were able to sustain gemcitabine release at selected temperatures.

3.2 Stability studies with cytidine deaminase

After intravenous administration, gemcitabine undergoes extensive metabolism to its inactive form, either intracellular or extracellular, due to the activity of CDA¹⁰. The stability of gemcitabine in the micellar formulation was investigated after incubation with crude CDA in comparison with parent gemcitabine. The concentration of drug was quantified at various time intervals using LC-MS/MS. As a function of incubation time with cytidine deaminase, the concentration of gemcitabine is shown in Figure-7. The disappearance in the native gemcitabine



was observed time-dependently and only around 11% of gemcitabine was detected after 30 min of incubation. Whereas, highly significant resistant was observed in the gemcitabine micellar formulation with more than 90% of gemcitabine can be detected after 30 min of incubation with crude CDA. This modest degradation of gemcitabine in TPGS-Gem micelles demonstrated the stability of formulation against CDA. These results are in accordance with previous reports, suggested that substitution of a 4-(N) amino group of gemcitabine prevents enzymatic degradation^{20, 48}.

3.3 *In vitro* cytotoxicity

The *in vitro* antiproliferative activity was performed by standard MTT assay after incubation of TPGS-Gem micelles, gemcitabine and placebo TPGS micelles with BxPC-3 cells as a model pancreatic cancer cell line at different incubation points *i.e.* 24 h, 48 h, and 72 h (Figure 8A, B, C respectively). Results suggested that the various test samples exhibited dose and time dependent cytotoxicity against BxPC-3 cells. It is noteworthy that placebo TPGS micelles also showed significant antiproliferative activity. The TPGS-Gem micelles and placebo TPGS micelles showed highly significant growth inhibition of BxPC-3 cells after 24 h as compared to gemcitabine. The IC₅₀ value of native gemcitabine was evaluated as 165±8.65 μM at 24 h of incubation time while the IC₅₀ value of TPGS-Gem micelles was 6.13±0.35 μM, and the IC₅₀ value of the equivalent amount of placebo TPGS micelles was found to be 9.09±0.7 μM. Further, after 48 h of incubation with samples, a similar trend was observed and TPGS-Gem micelles showed a significant higher cytotoxicity as compared to gemcitabine, however, the IC₅₀ value of gemcitabine decreased massively to 2.4±0.23 μM, and the IC₅₀ value of TPGS-Gem micelles and placebo TPGS micelles was demonstrated as 1.6±0.26 μM, 3.1±0.28 μM, respectively. A further extend in the incubation time to 72 h, continued to decrease the drug concentration necessary to



50% of growth inhibition. The IC_{50} values were decreased to $0.27 \pm 0.1 \mu\text{M}$, $0.6 \pm 0.22 \mu\text{M}$, and $1.76 \pm 0.22 \mu\text{M}$ for gemcitabine, TPGS-Gem micelles, and placebo TPGS micelles respectively. However, there a comparable difference was showed in the IC_{50} value of gemcitabine and TPGS-Gem micelles after 72 h of incubation (Figure-8D). The enhanced cytotoxic efficacy of gemcitabine could be due to the intrinsic anticancer efficacy of TPGS and/or stability of gemcitabine in micellar formulation against cytidine deaminase, which can convert the monophosphorylated form of gemcitabine to an inactive metabolite.

3.4 Nucleoside transporter inhibition

Due to the highly hydrophilic character of gemcitabine, it relies on the nucleoside transporter to cross the cellular lipid bilayer and display its antiproliferative activity. A resistance mechanism of gemcitabine includes deficiency of nucleoside transporters, causes decrease in the transport activity of drug into the cell⁴⁹. Therefore, to assess the dependency of TPGS-Gem micelles on nucleoside transporters like gemcitabine, a nucleoside transporter inhibition assay was performed. During MTT assay, the cells were treated with dipyridamole, to block the nucleoside transporter, prior to addition of various concentration of TPGS-Gem micelles and gemcitabine. The IC_{50} values were determined against BxPC-3, pancreatic cancer cells after 48 h of incubation (Table-1). The IC_{50} value of native gemcitabine obtained after treatment with dipyridamole was $11 \mu\text{M}$, which is 5-fold higher than the IC_{50} value obtained with the cell not treated with dipyridamole. However, when TPGS-Gem micelles were treated with cells pre-incubated with dipyridamole, there was no significant change was observed in the IC_{50} value. These results reflect that TPGS-Gem micelles were not dependent on nucleoside transporter to cross the cellular lipid bilayer.

3.5 Cellular uptake



The qualitative uptake of coumrin-6 loaded TPGS-Gem micelles in BxPC-3 cells was determined in the presence and absence of dipyridamole by measurement of fluorescence. Coumarin-6 was used as a fluorescent marker to identify the uptake of micelles in BxPC-3 cells. Figure-9 shows the uptake of TPGS-Gem micelles after 4 h of incubation with BxPC-3 cells, the green fluorescence was due to the coumarin-6 loaded micelles internalized by the cells. In order to confirm that fluorescence was present inside the cells, nucleus was counter stained with a DAPI, a blue fluorescent dye. The green fluorescence adjacent to the nucleus confirming the micelles were within the cells instead of attached to the cell surface. Furthermore, nearly all cells either in presence (Figure-9A) and absence (Figure-9D) of nucleoside transporter inhibitor were stained with green fluorescence suggesting that there was no significant difference in the uptake of micelles, suggesting that in the micellar formulation gemcitabine does not dependent on nucleoside transporters for internalization in the cells. These results can be correlated with the insignificant change in the IC_{50} values obtained after inhibition of nucleoside transporters by dipyridamole.

3.5 AFM topography

To study the morphological changes in BxPC-3 cells after treatment with TPGS-Gem micelles and native gemcitabine, the cells were observed under atomic force microscope (AFM). The control cells were treated with media only. It was observed that the control cell had a smooth well-defined morphology and showed an epithelial cell shape in general (Figure-10A). The AFM image of cell treated with native gemcitabine showed a smooth surface, however, marked specific degenerative alteration in the cell shape can be easily observed in the image (Figure-10B). This could be correlated with the higher IC_{50} value of the gemcitabine after 24 h of incubation. Instead, in the AFM image of TPGS-Gem micelles treated cell, several pits on the



surface is clearly visible and the morphology of cell was also transformed (Figure-10C). The small pits on the cells attributed the morphological alteration in response to TPGS-Gem micelles⁵⁰. The ability to visualize cellular state is advantageous in order to accurately demonstrate the effect of these formulations on the morphology and physiology. Although not qualitative these provide a good tool to compliment the cytotoxicity studies and provide insight into the likely fate of the cells. In this study the presence of pitting indicated that cellular morphology has been altered and perhaps cell membrane integrity has been compromised. This indicates that the cells are not residing in their 'normal' state. Hence, the observations of AFM topography suggested the enhanced efficacy of gemcitabine after formation of TPGS conjugated micelles.

4. Conclusion

In the present investigation, TPGS-Gem prodrug was synthesized and thoroughly characterised using analytical techniques. The micelles of TPGS-Gem prodrug were prepared and characterised for various physicochemical properties. The TPGS-Gem micelles were evaluated against the determinants, which hamper gemcitabine activity. The significant resistance of prepared micelles was observed against cytidine deaminase which may lead to long circulation half-life of gemcitabine. The prepared gemcitabine micelles exhibited enhanced anticancer activity in the selected cell lines as compared to free gemcitabine. It is remarkable that unlike gemcitabine, TPGS-Gem micelles were not relying on nucleoside transporter to cross the cellular lipid bilayer. Further, morphological studies suggested the potential anticancer activity of TPGS-Gem micelles *in vitro*. Moreover, our findings provide a guideline for *in vivo* investigations to confirm the feasibility of micellar formulation for clinics.

5. Acknowledgements



We are grateful to Institute of Science and Technology in Medicine and School of Pharmacy, Keele University for providing necessary facilities for carrying out this work. The financial assistance provided by British Council and Department of Science and Technology, India as a Newton-Bhabha fellowship to Vaibhav Khare is gratefully acknowledged (DST/INSPIRE/NBHF/2014/25).

6. References

1. M. Hidalgo, *N. Engl. J. Med.*, 2010, **362**, 1605-1617.
2. K. D. Lillemoe, *Ann Surg.*, 1995, **221**, 133-148.
3. D. Li, K. Xie, R. Wolff and J. L. Abbruzzese, *Lancet.*, 2004, **363**, 1049-1057.
4. V. Heinemann, *Semin. Oncol.*, 2002, **29**, 25-35.
5. M. Di Marco, R. Di Cicilia, M. Macchini, E. Nobili, S. Vecchiarelli, G. Brandi and G. Biasco, *Oncol. Rep.*, 2010, **23**, 1183-1192.
6. J. Ciccolini, C. Serdjabi, G. J. Peters and E. Giovannetti, *Cancer Chemother. Pharmacol.*, 2016.
7. S. A. Welch and M. J. Moore, *J. Clin. Oncol.*, 2007, **25**, 2159-2161.
8. V. Khare, N. Alam, A. Saneja, R. D. Dubey and P. N. Gupta, *J. Biomed. Nanotechnol.*, 2014, **10**, 3462-3482.
9. S. Ali, A. Ahmad, S. Banerjee, S. Padhye, K. Dominiak, J. M. Schaffert, Z. Wang, P. A. Philip and F. H. Sarkar, *Cancer Res.*, 2010, **70**, 3606-3617.
10. J. L. Abbruzzese, R. Grunewald, E. A. Weeks, D. Gravel, T. Adams, B. Nowak, S. Mineishi, P. Tarassoff, W. Satterlee, M. N. Raber and et al., *J. Clin. Oncol.*, 1991, **9**, 491-498.



11. S. Aggarwal, S. Gupta, D. Pabla and R. S. Murthy, *Cancer. Nanotechnol.*, 2013, **4**, 145-157.
12. J. L. Arias, L. H. Reddy and P. Couvreur, *J. Drug. Target.*, 2009, **17**, 586-598.
13. M. L. Immordino, P. Brusa, F. Rocco, S. Arpicco, M. Ceruti and L. Cattel, *J. Control. Release*, 2004, **100**, 331-346.
14. C. Bornmann, R. Graeser, N. Esser, V. Ziroli, P. Jantscheff, T. Keck, C. Unger, U. T. Hopt, U. Adam, C. Schaechtele, U. Massing and E. von Dobschuetz, *Cancer Chemother. Pharmacol.*, 2008, **61**, 395-405.
15. Z. Daman, S. Ostad, M. Amini and K. Gilani, *Int. J. Pharm.*, 2014, **468**, 142-151.
16. S. Zhu, P. Wonganan, P. D. Lansakara, H. L. O'Mary, Y. Li and Z. Cui, *Biomaterials*, 2013, **34**, 2327-2339.
17. V. Khare, S. Kour, N. Alam, R. D. Dubey, A. Saneja, M. Koul, A. P. Gupta, D. Singh, S. K. Singh, A. K. Saxena and P. N. Gupta, *Int. J. Pharm.*, 2014, **470**, 51-62.
18. M. Vandana and S. K. Sahoo, *Biomaterials*, 2010, **31**, 9340-9356.
19. L. V. Kiew, S. K. Cheong, K. Sidik and L. Y. Chung, *Int. J. Pharm.*, 2010, **391**, 212-220.
20. X. M. Tao, J. C. Wang, J. B. Wang, Q. Feng, S. Y. Gao, L. R. Zhang and Q. Zhang, *Eur. J. Pharm. Biopharm.*, 2012, **82**, 401-409.
21. P. Couvreur, B. Stella, L. H. Reddy, H. Hillaireau, C. Dubernet, D. Desmaele, S. Lepetre-Mouelhi, F. Rocco, N. Dereuddre-Bosquet, P. Clayette, V. Rosilio, V. Marsaud, J. M. Renoir and L. Cattel, *Nano. Lett.*, 2006, **6**, 2544-2548.
22. D. Chitkara, A. Mittal, S. W. Behrman, N. Kumar and R. I. Mahato, *Bioconjug. Chem.*, 2013, **24**, 1161-1173.



23. H. Han, H. Wang, Y. Chen, Z. Li, Y. Wang, Q. Jin and J. Ji, *Nanoscale*, 2016, **8**, 283-291.
24. Z. Zhang, S. Tan and S. S. Feng, *Biomaterials*, 2012, **33**, 4889-4906.
25. H. Borowy-Borowski, C. Sodja, J. Docherty, P. R. Walker and M. Sikorska, *J. Drug Target.*, 2004, **12**, 415-424.
26. R. J. Sokol, N. Butler-Simon, C. Conner, J. E. Heubi, F. R. Sinatra, F. J. Suchy, M. B. Heyman, J. Perrault, R. J. Rothbaum, J. Levy and et al., *Gastroenterology*, 1993, **104**, 1727-1735.
27. C. M. Neophytou, C. Constantinou, P. Papageorgis and A. I. Constantinou, *Biochem. Pharmacol.*, 2014, **89**, 31-42.
28. H. J. Youk, E. Lee, M. K. Choi, Y. J. Lee, J. H. Chung, S. H. Kim, C. H. Lee and S. J. Lim, *J. Control. Release*, 2005, **107**, 43-52.
29. Y. Mi, Y. Liu and S. S. Feng, *Biomaterials*, 2011, **32**, 4058-4066.
30. P. Xu, Q. Yin, J. Shen, L. Chen, H. Yu, Z. Zhang and Y. Li, *Int. J. Pharm.*, 2013, **454**, 21-30.
31. C. Constantinou, A. Papas and A. I. Constantinou, *Int. J. Cancer.*, 2008, **123**, 739-752.
32. Q. Guo, Y. Chen, B. Zhang, M. Kang, Q. Xie and Y. Wu, *Biochem. Pharmacol.*, 2009, **77**, 1674-1683.
33. W. S. Liu, H. J. Yan, R. Y. Qin, R. Tian, M. Wang, J. X. Jiang, M. Shen and C. J. Shi, *Dig. Dis. Sci.*, 2009, **54**, 89-96.
34. Y. Guo, M. Chu, S. Tan, S. Zhao, H. Liu, B. O. Otieno, X. Yang, C. Xu and Z. Zhang, *Mol. Pharm.*, 2014, **11**, 59-70.



35. G. Cavallaro, M. Licciardi, S. Salmaso, P. Caliceti and G. Gaetano, *Int. J. Pharm.*, 2006, **307**, 258-269.
36. S. Sheng, T. Zhang, S. Li, J. Wei, G. Xu, T. Sun, Y. Chen, F. Lu, Y. Li and J. Yang, *RSC Adv.*, 2015, **5**, 53846-53856.
37. I. F. Uchegbu, L. Sadiq, M. Arastoo, A. I. Gray, W. Wang, R. D. Waigh and A. G. Schatzlein, *Int. J. Pharm.*, 2001, **224**, 185-199.
38. V. L. Damaraju, S. Damaraju, J. D. Young, S. A. Baldwin, J. Mackey, M. B. Sawyer and C. E. Cass, *Oncogene*, 2003, **22**, 7524-7536.
39. Y. Bao, Y. Guo, X. Zhuang, D. Li, B. Cheng, S. Tan and Z. Zhang, *Mol. Pharm.*, 2014, **11**, 3196-3209.
40. C. Maurizio, R. Flavio and T. Elena, *New J. Chem.*, 2015, **39**, 3484-3496.
41. E. Blanco, C. W. Kessinger, B. D. Sumer and J. Gao, *Exp. Biol. Med. (Maywood)*, 2009, **234**, 123-131.
42. V. Prabhu, S. Uzzaman, V.M.B. Grace and C. Guruvayoorappan, *J. Cancer Ther.* 2011, **2**, 325-334.
43. S. Acharya and S. K. Sahoo, *Adv. Drug Deliv. Rev.*, 2011, **63**, 170-183.
44. Y. Mi, J. Zhao and S. S. Feng, *Int. J. Pharm.*, 2012, **438**, 98-106.
45. P. K. T. Lin, W. P. Cheng and C. Hoskins, *US Pat.*, 0238487, 2012.
46. H. Kulhari, D. Pooja, S. Shrivastava, S. R. Telukutala, A. K. Barui, C. R. Patra, G. M. N. Vegi, D. J. Adams and R. Sistla, *Nanomed. Nanotech. Biol. Med.*, 2015, **11**, 1511-1520.
47. P. P. Constantinides, J. Han and S. S. Davis, *Pharm. Res.*, 2006, **23**, 243-255.
48. X. Song, P. L. Lorenzi, C. P. Landowski, B. S. Vig, J. M. Hilfinger and G. L. Amidon, *Mol. pharm.*, 2005, **2**, 157-167.



49. A. M. Bergman, H. M. Pinedo and G. J. Peters, *Drug Resist. Updat.*, 2002, **5**, 19-33.
50. C. Hoskins, A. Cuschieri and L. Wang, *J. Nanobiotechnology*, 2012, **10**, 15.

Legends (Figures)

Figure-1	A schematic representation of the reaction involved in the synthesis of Tocopherol polyethylene glycol succinate 1000 (TPGS)-gemcitabine prodrug.
Figure-2	Stacked Fourier transform-infrared (FT-IR) spectra of TPGS, gemcitabine and TPGS-Gem prodrug scanned in the region of 3500 cm ⁻¹ to 800 cm ⁻¹ .
Figure-3	Stacked ¹ H-NMR (400 MHz) spectra of TPGS, TPGS-SA, gemcitabine, and TPGS-Gem micelles registered using trimethylsilane as an internal standard.
Figure-4	Full mass overview spectra's of TPGS (A), TPGS-SA (B) and TPGS-Gem prodrug (C) by MALDI-TOF.
Figure-5	Representative particle size distribution (A) and zeta potential (B) of TPGS-Gem micelles measured by dynamic light scattering measurement at fixed 90 ⁰ angle at 25 °C using disposable polystyrene cells and folded capillary cells respectively. (C) Transmission electron micrograph of TPGS-Gem micelles revealing size of micelles captured using a formvar-coated copper grid (D). Critical micelle concentration measurement of TPGS-Gem micelles using methyl orange as hydrophobic probe, inflexion point in the graph represents the CMC value.
Figure-6	Metabolic stability of TPGS-Gem micelles in comparison to native gemcitabine. Micellar gemcitabine or free gemcitabine (0.4 mM) was incubated in a buffer (pH 7.5) containing cytidine deaminase (10µl, specific activity 3.5unit/mg) at 37 °C. (*P < 0.05, n=3)
Figure-7	Release profile of gemcitabine from TPGS-Gem micelles after incubation in PBS (pH 7.4) for one week, at various temperatures <i>i.e.</i> 30, 37 and 40 °C. The concentration of drug released at specific time point was analyzed validated HPLC method. (*P < 0.05, 30 °C vs 37 °C /40 °C, after Bonferroni correction, n=3)
Figure-8	Percent of cell viability on different concentrations of gemcitabine, TPGS-Gem micelles and placebo TPGS micelles (<i>i.e.</i> TPGS with no drug conjugated, at equivalent weight as in TPGS-Gem micelles) against BxPC-3 cells at incubation time 24h (A), 48h (B) and 72h (C). The IC ₅₀ value obtained cells after incubation



	of samples at different time points (D). The results represent mean SD of three experiments. *P < 0.05 vs. Gemcitabine/ Placebo TPGS micelles
Figure-9	Demonstration of cellular uptake of TPGS-Gem micelles using fluorescence microscopy in BxPC-3 cell lines in presence (A-C) and absence (D-F) of nucleoside transporter, dipyrindamole. Micelles up-taken by cells showing green fluorescence and nuclei stained by DAPI showing blue fluorescence. Images were captured using EVOS® Flويد® cell imaging station.
Figure-10	Effect of gemcitabine and TPGS-Gem micelles on the cellular morphology in human pancreatic cancer cell line (BxPC-3) by AFM topography. The cells were treated with a 10µM concentration of test sample with respect to drug concentration in 6 well plates for 24h and fixed by 2.5% of glutaraldehyde before images were captured under AFM. (A) non-treated control cell, (B) cell treated with gemcitabine and (C) cell treated with TPGS-Gem micelles (arrow showing the pits on the surface of cell)



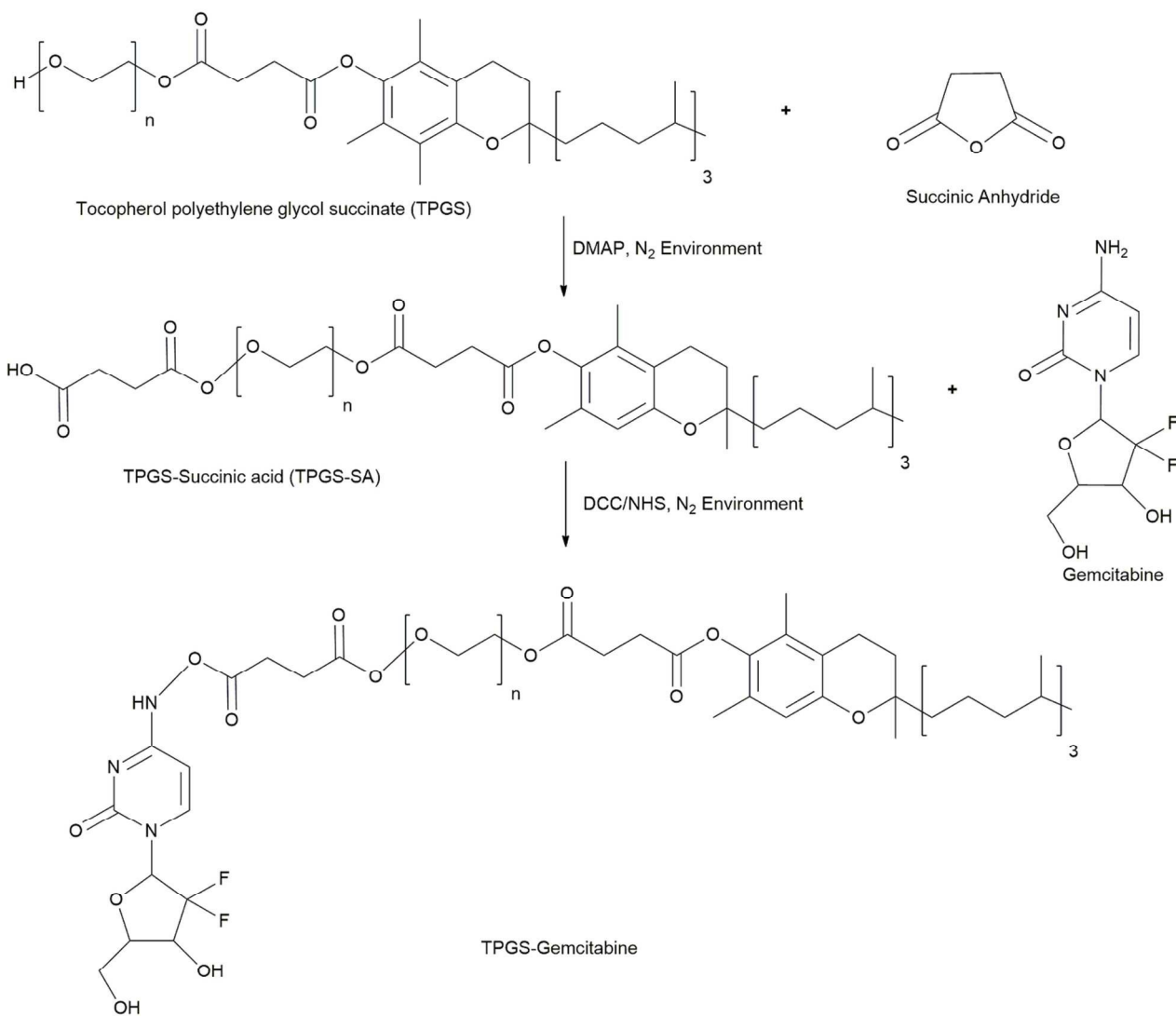


Figure-1



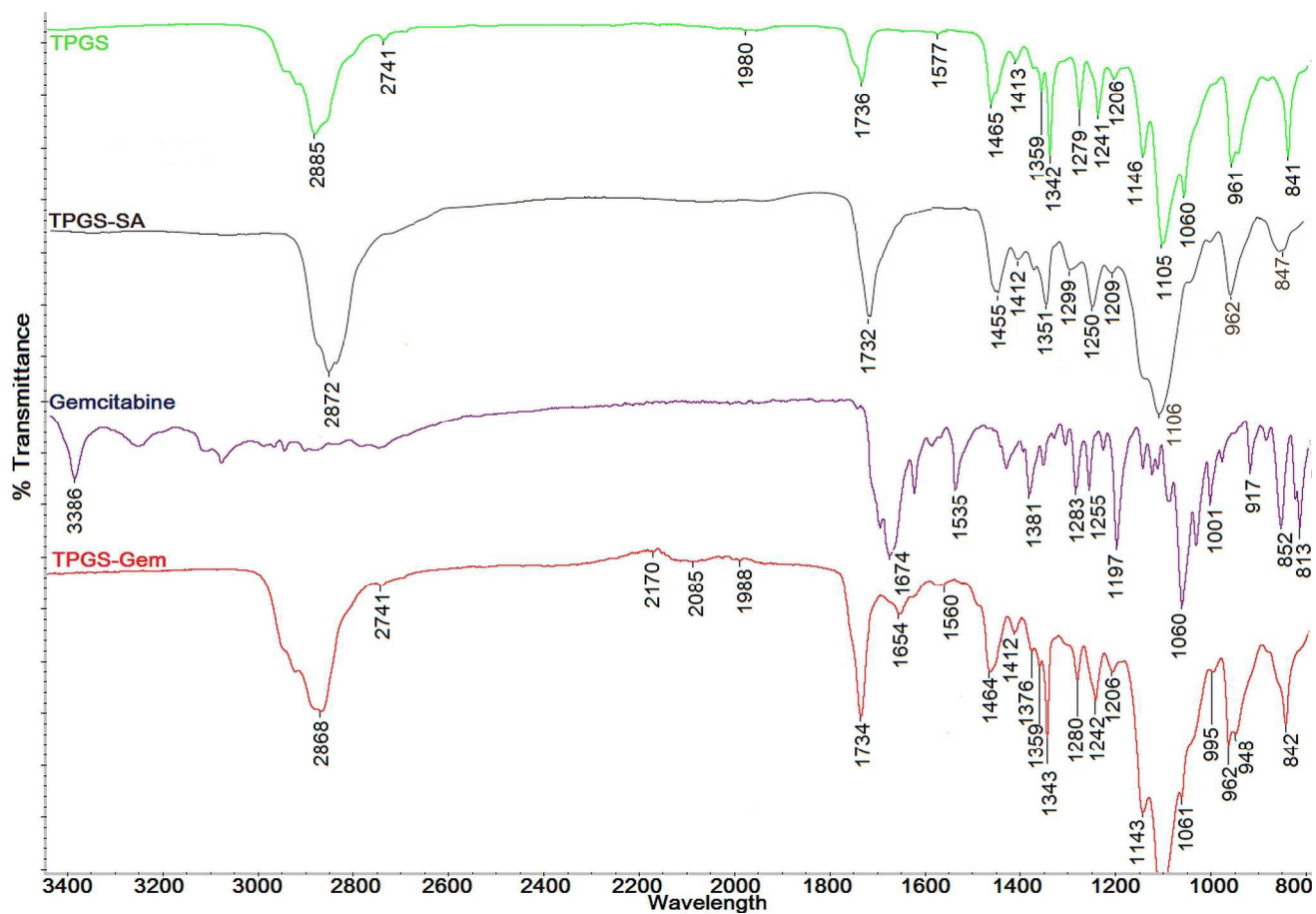


Figure-2



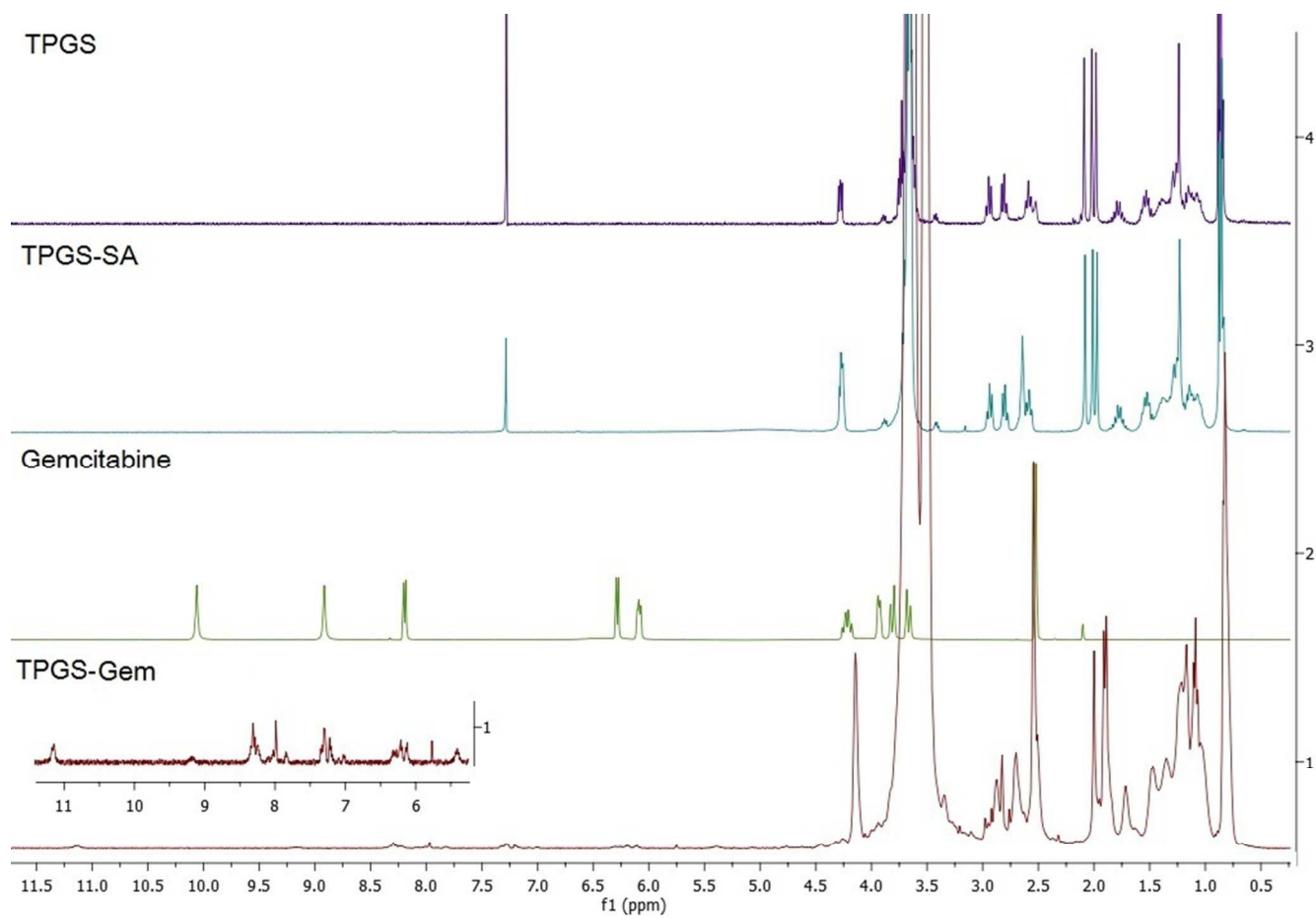


Figure-3



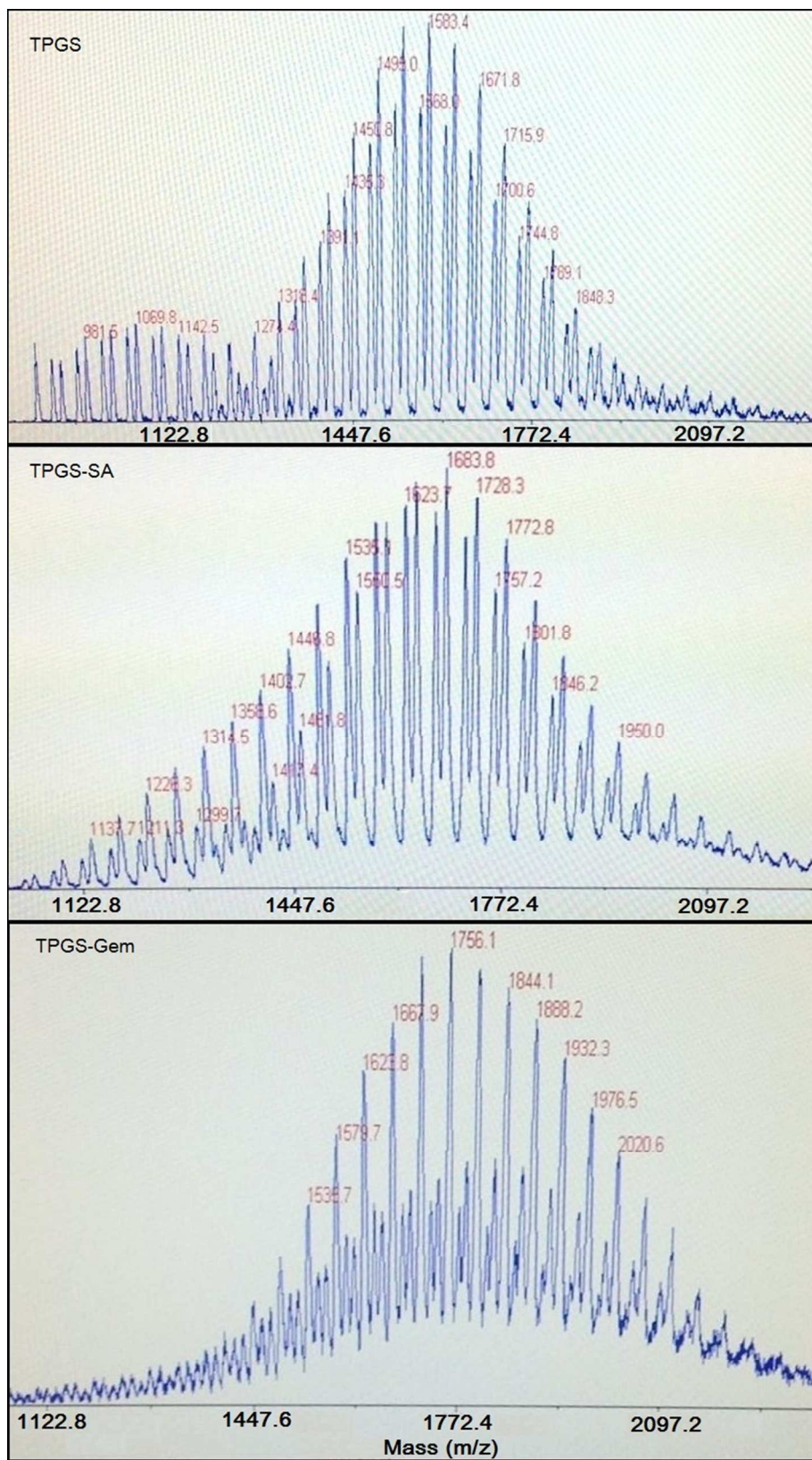


Figure-4



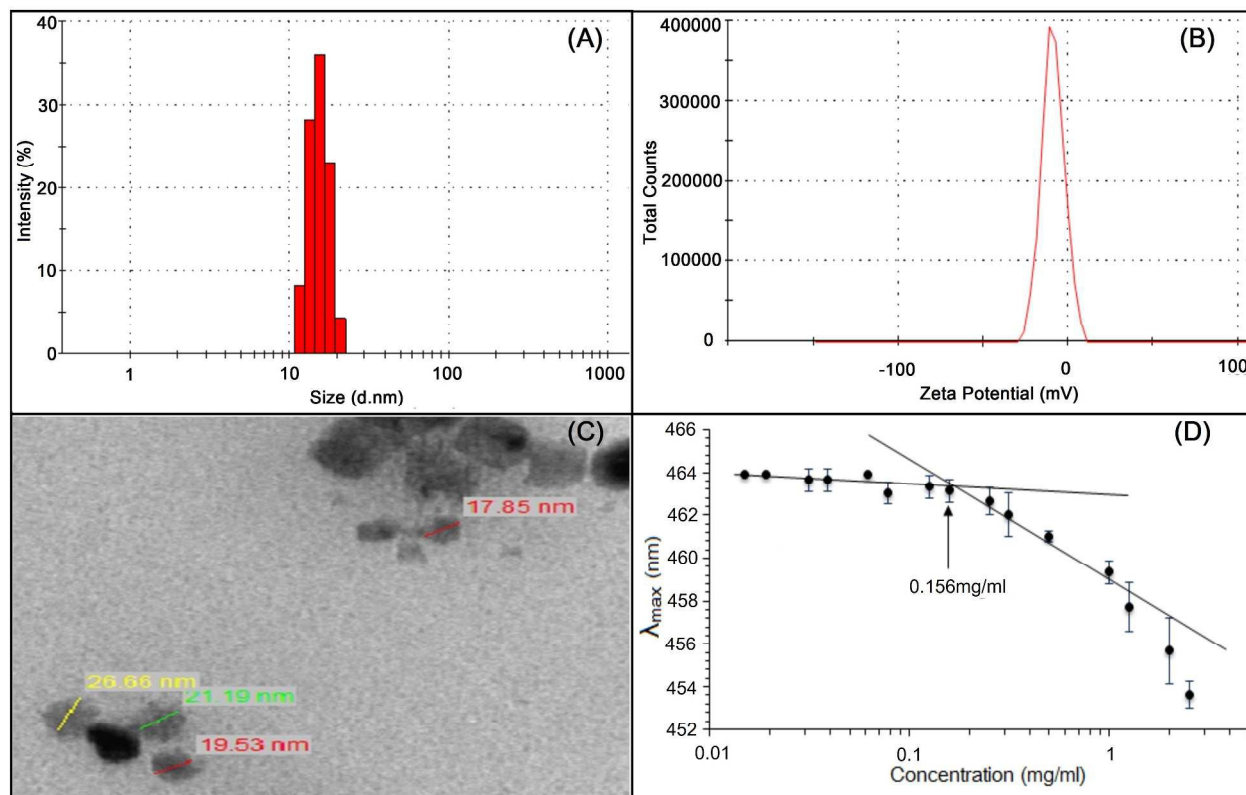


Figure-5



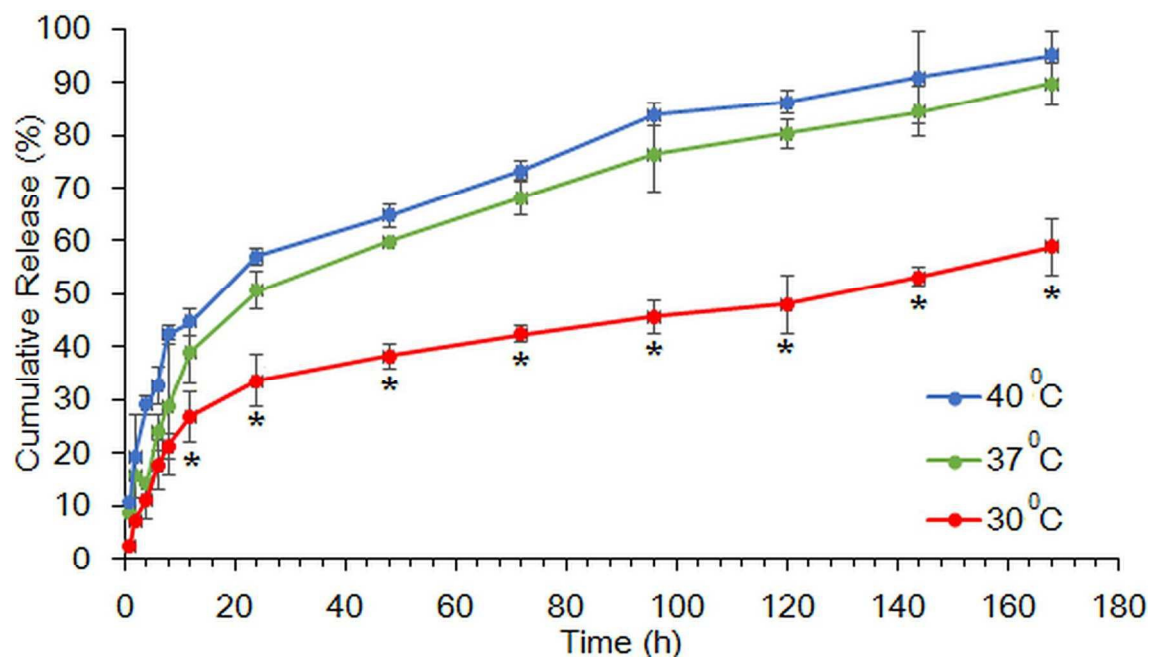


Figure-6



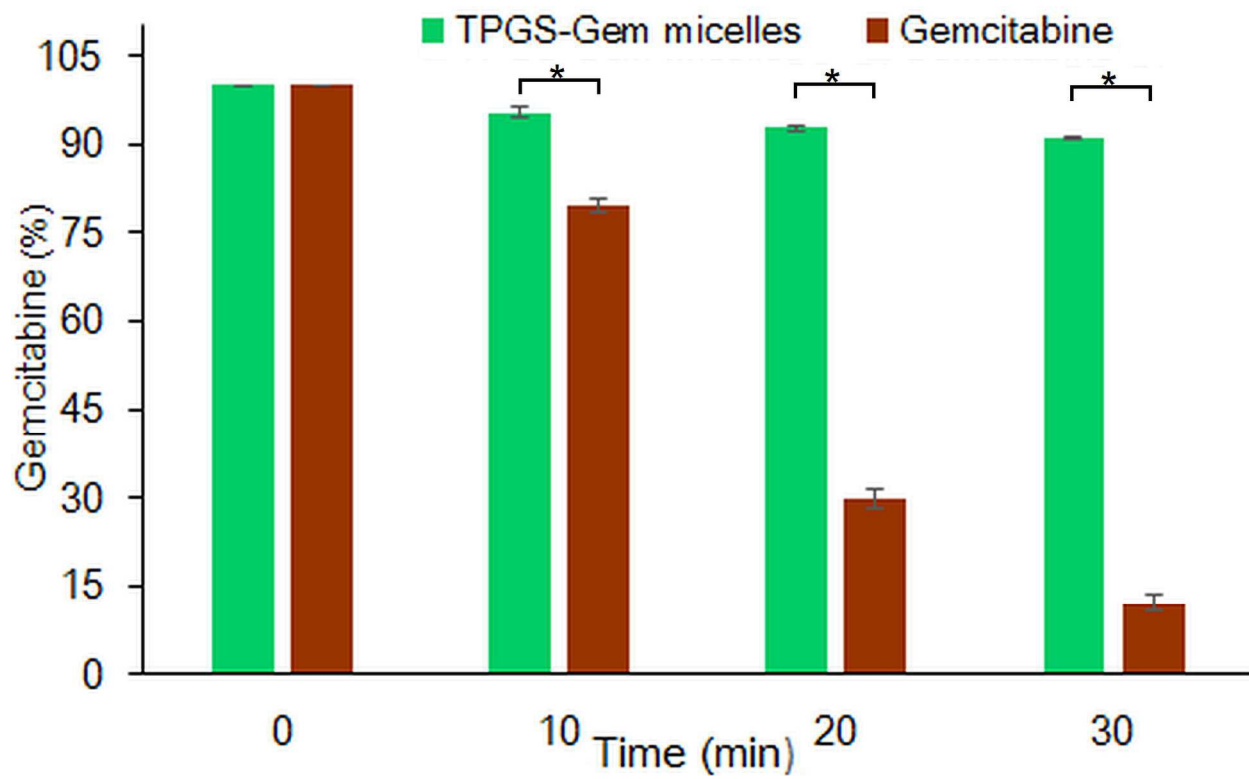


Figure-7



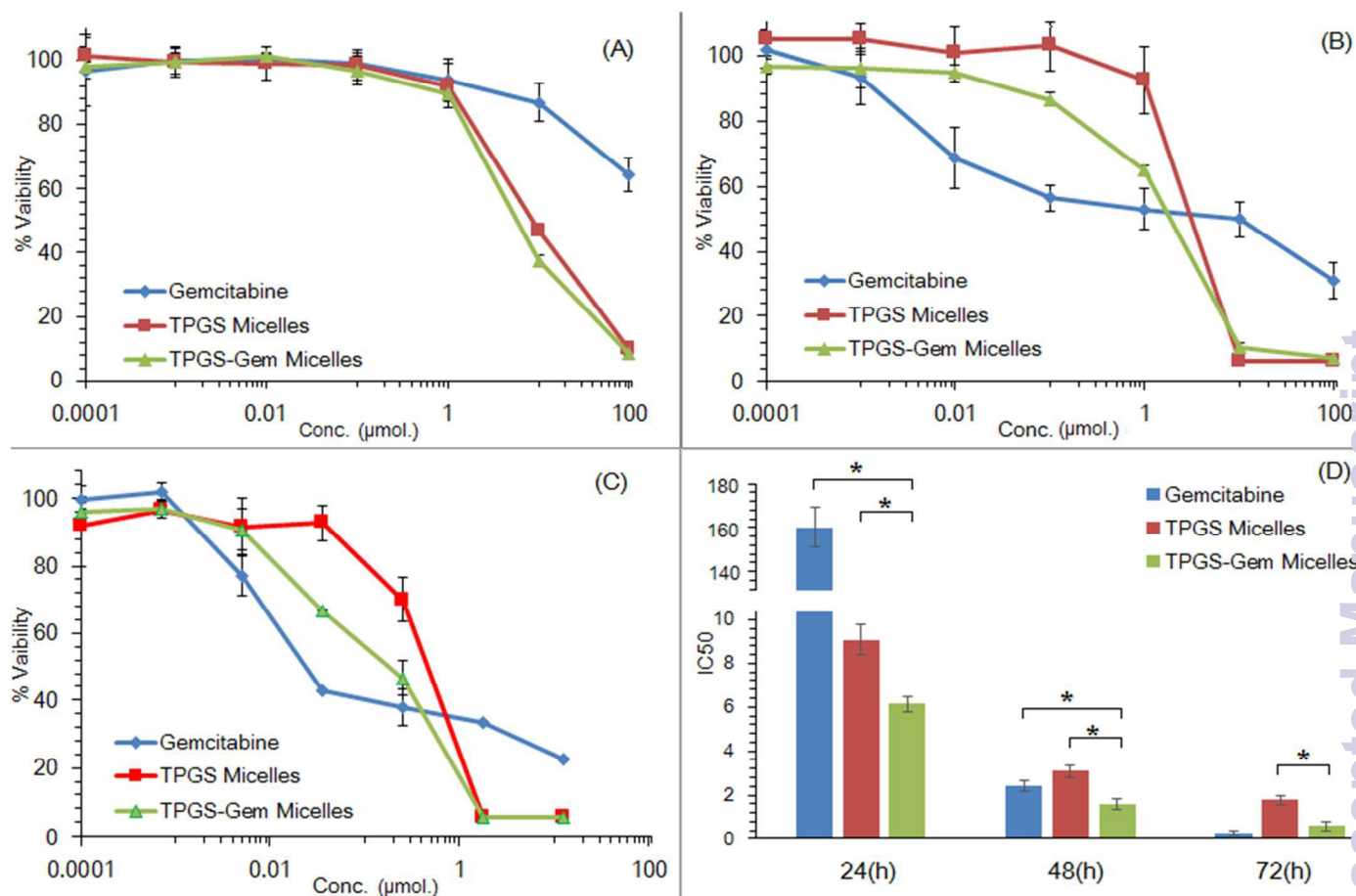


Figure-8



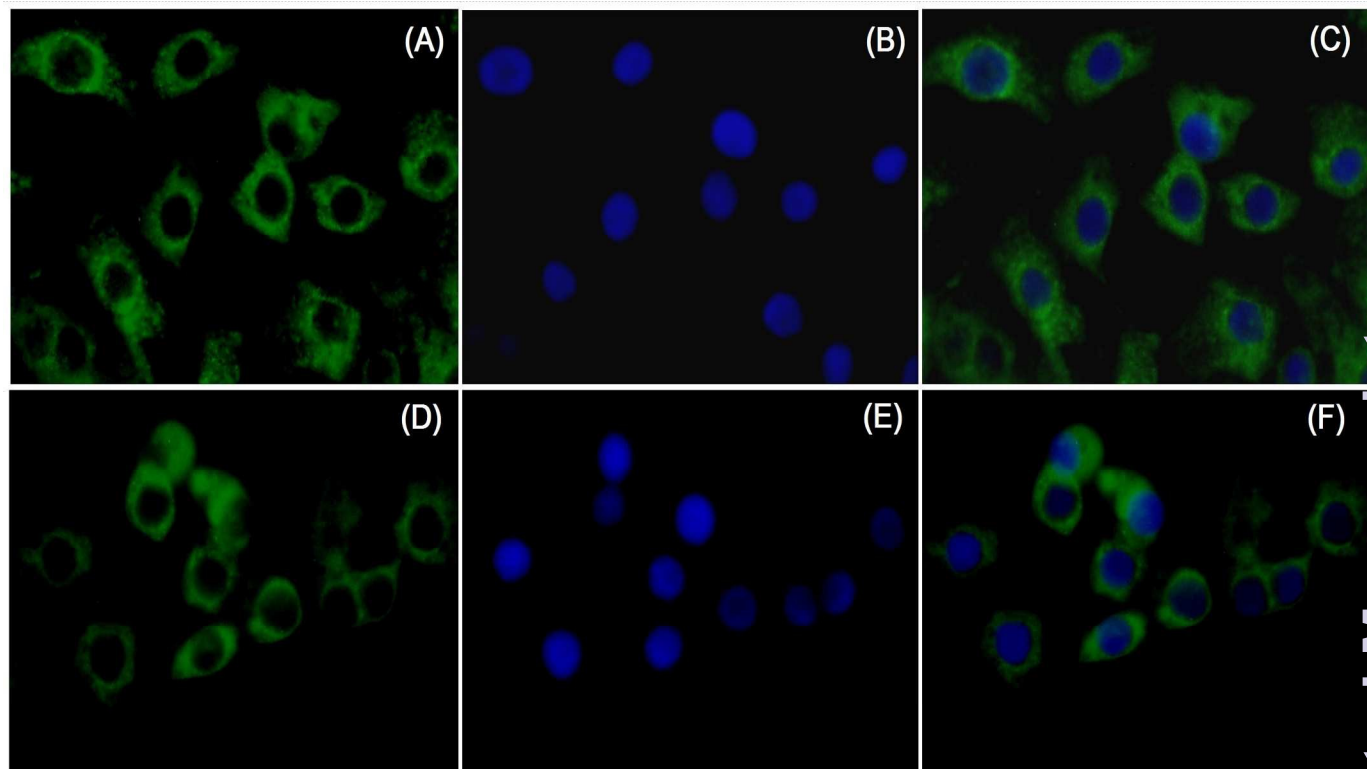


Figure-9



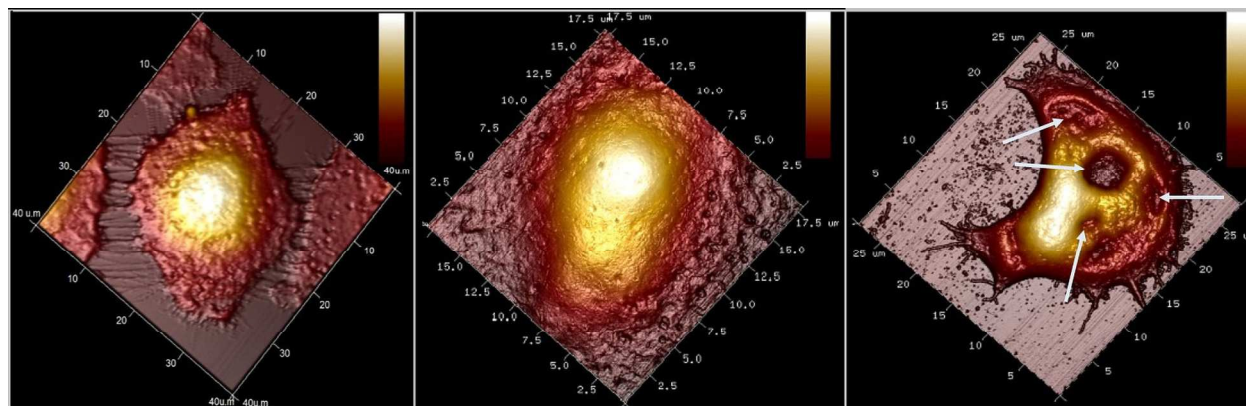
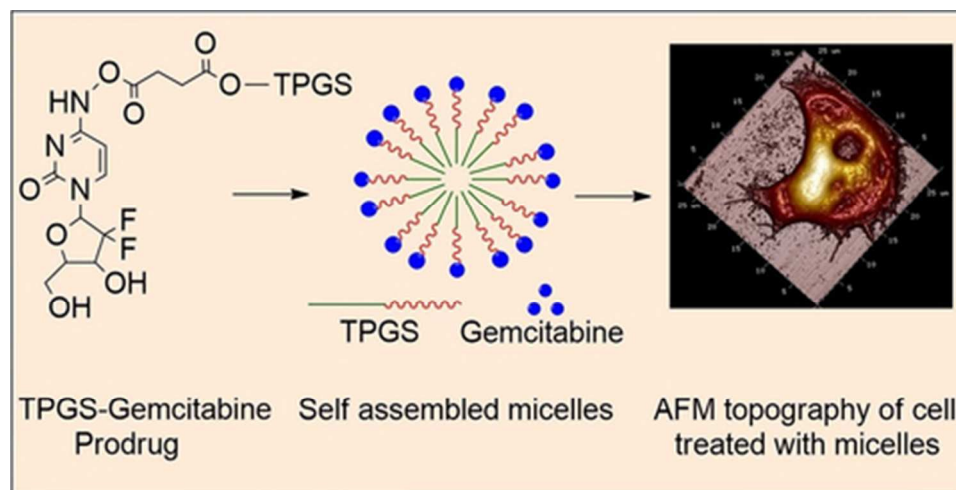


Figure-10

Table-1: Effect of nucleoside transporter inhibitor on antiproliferative activity of gemcitabine and TPGS-gem micelles against BxPC-3 cell lines following 48h of incubation.

Sample	BxPC-3 Cells	
	IC ₅₀ (μM)	Relative gemcitabine resistance
Gemcitabine	2.4	-
Gemcitabine + dipyridamole	11.9	5
TPGS-Gem micelles	1.6	-
TPGS-Gem micelles + dipyridamole	1.3	0.82





40x20mm (300 x 300 DPI)

