

Figure 1

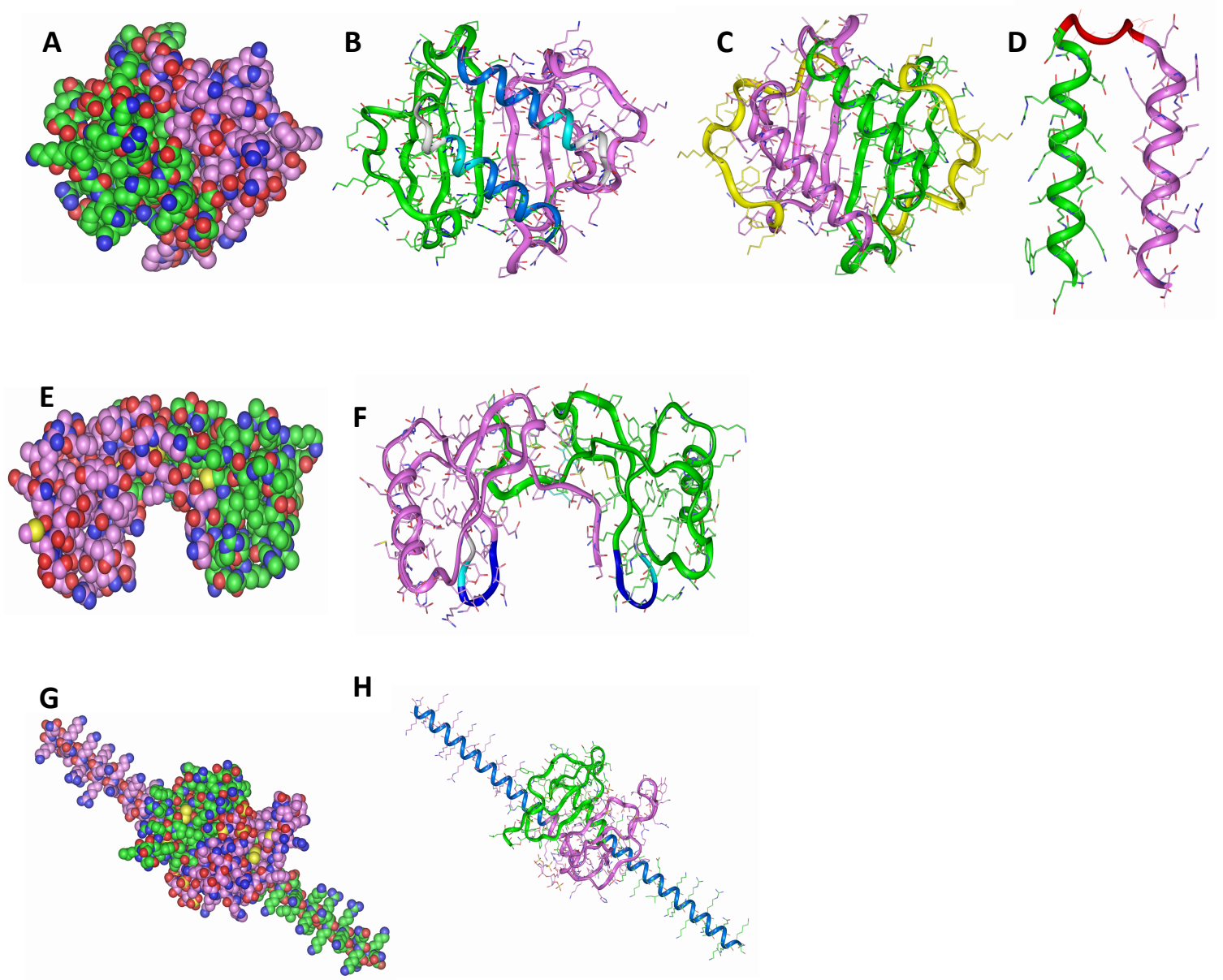


Figure 2

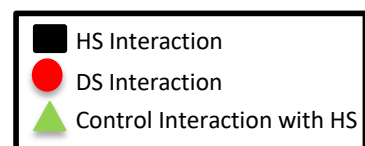
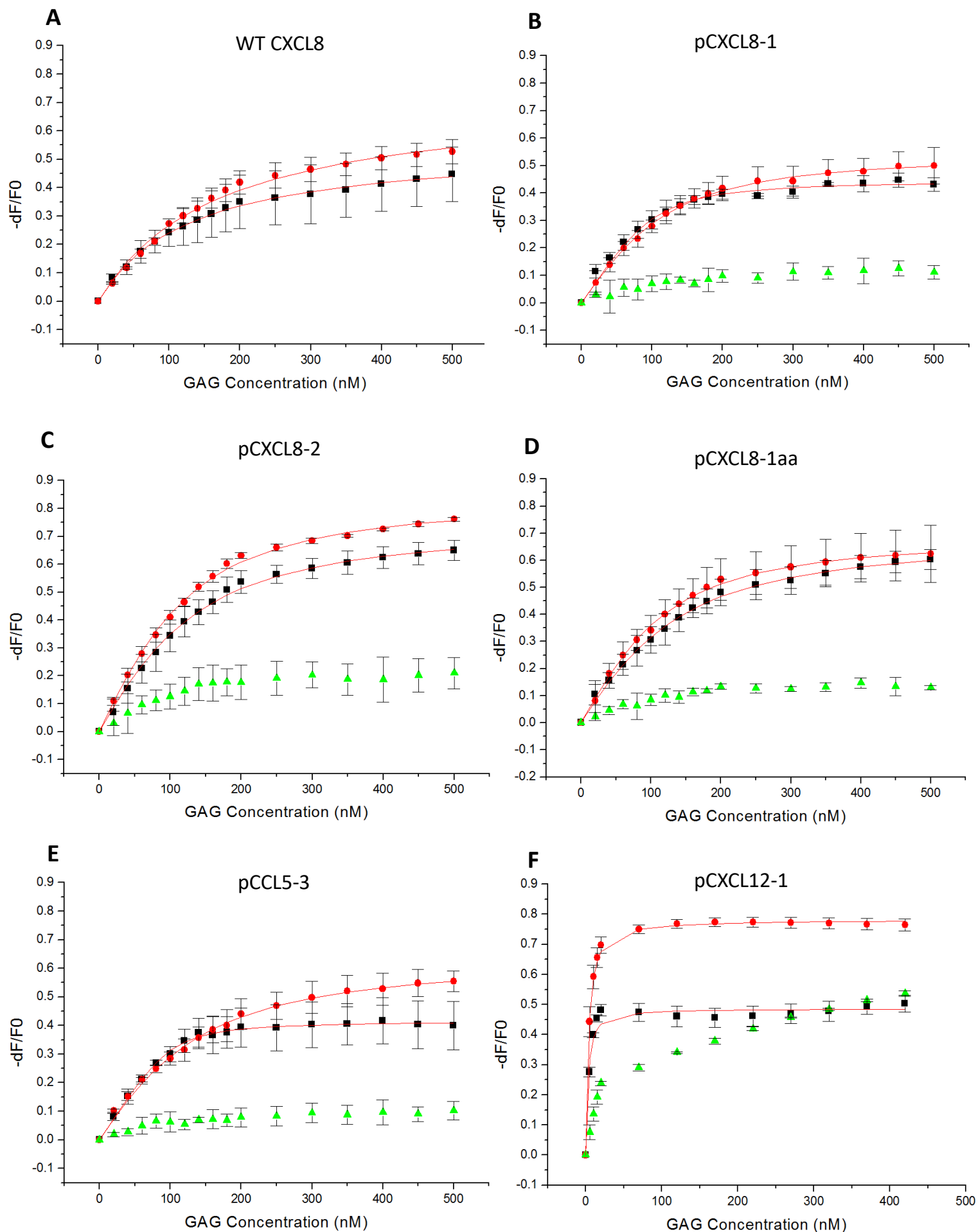


Figure 3

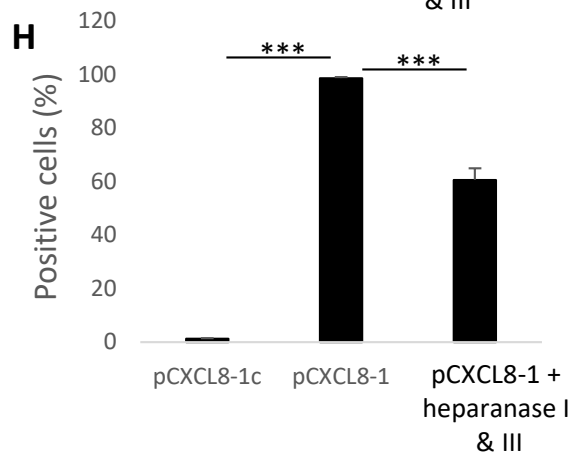
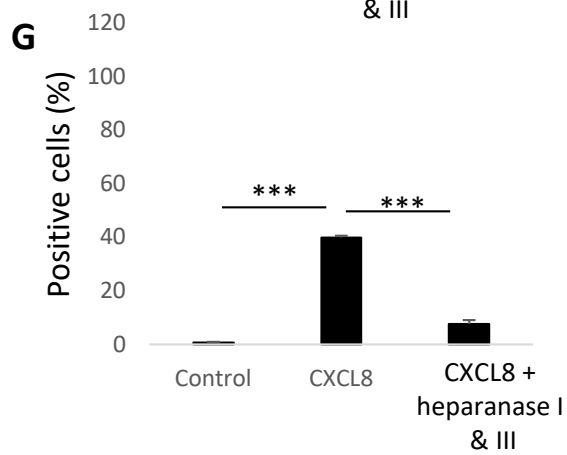
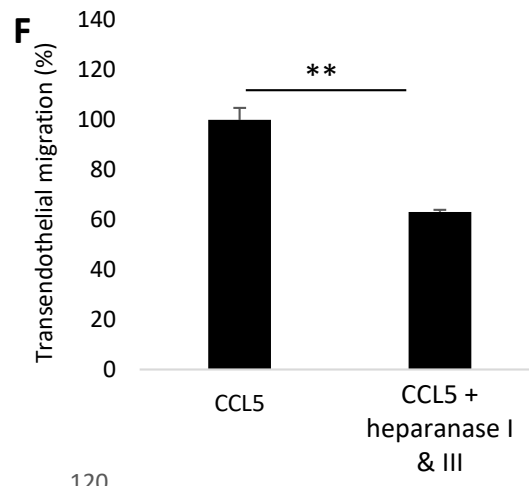
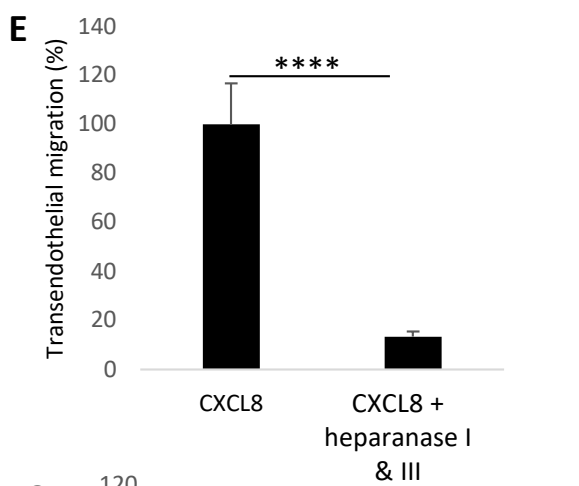
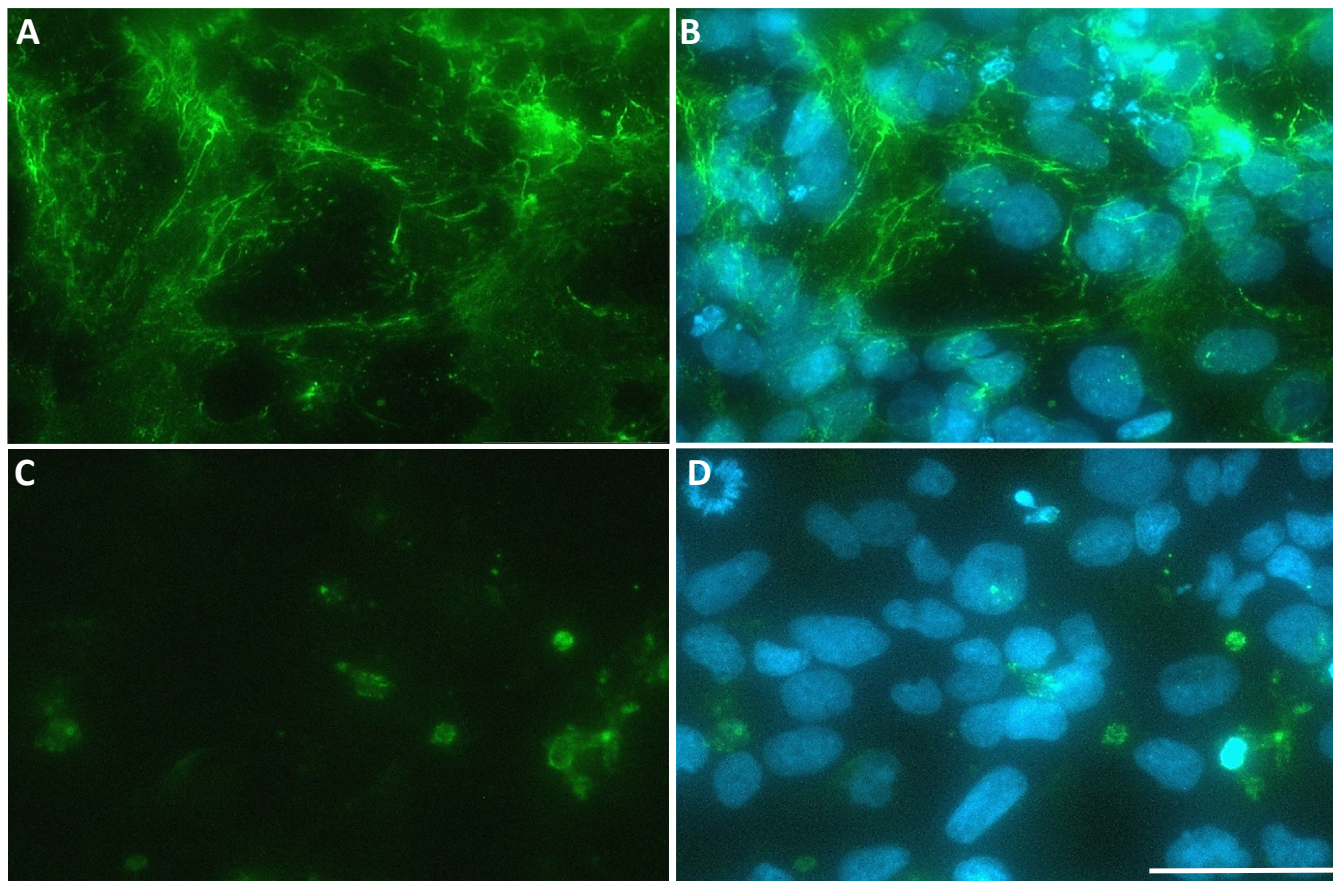
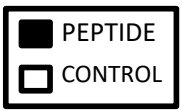


Figure 4

HCMEC/D3

HBMEC



TRANSENDOTHELIAL MIGRATION (%)

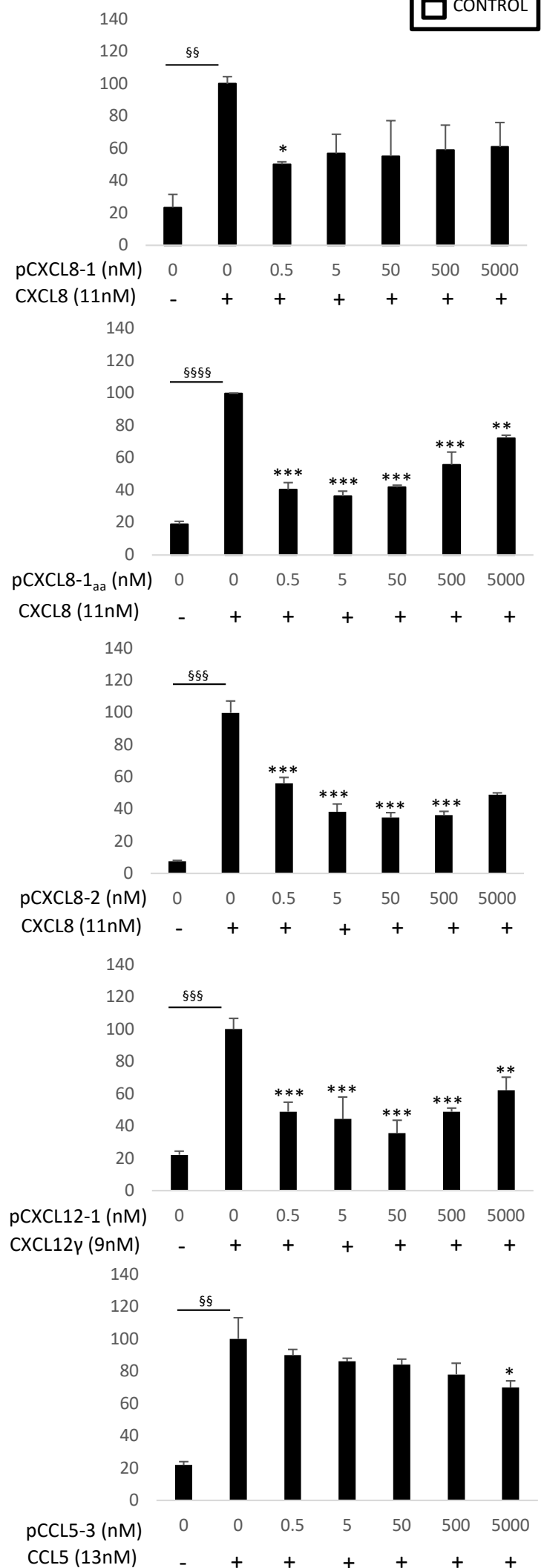
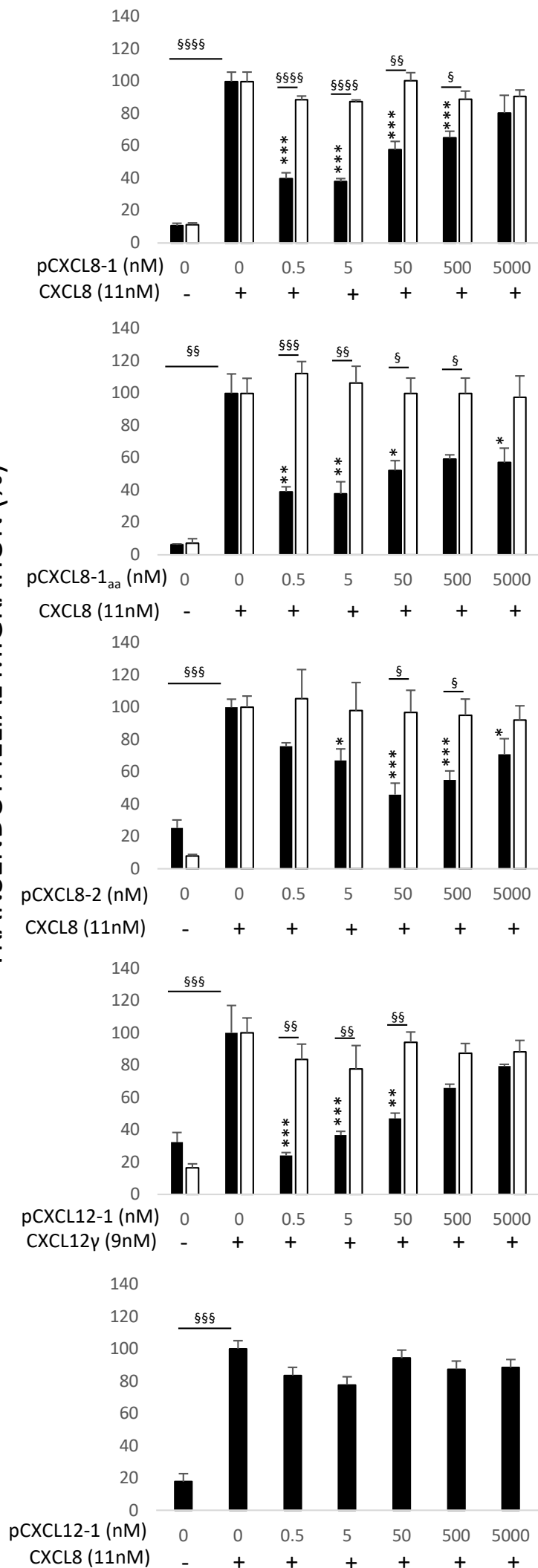


Figure 5

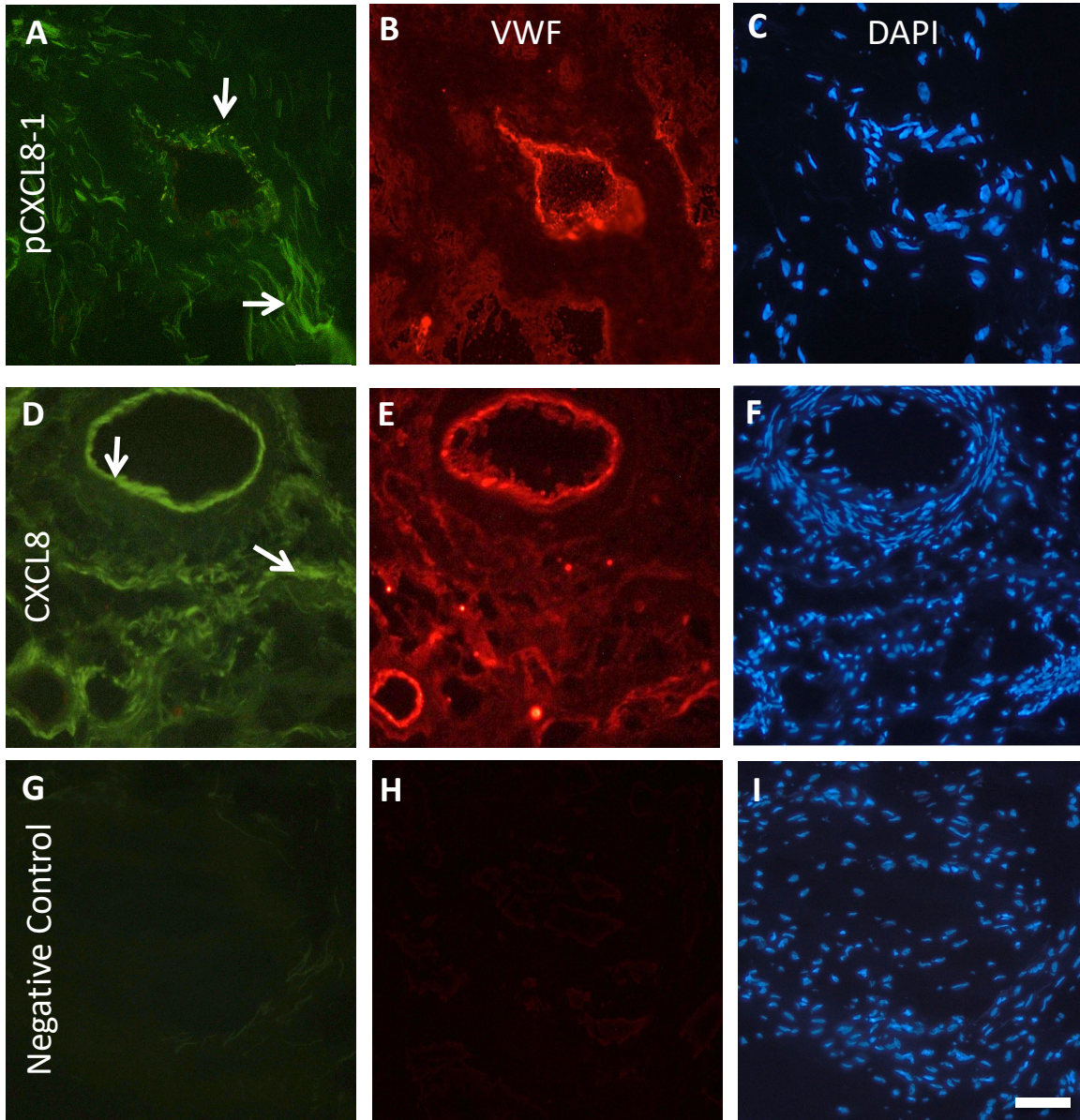


Figure 6

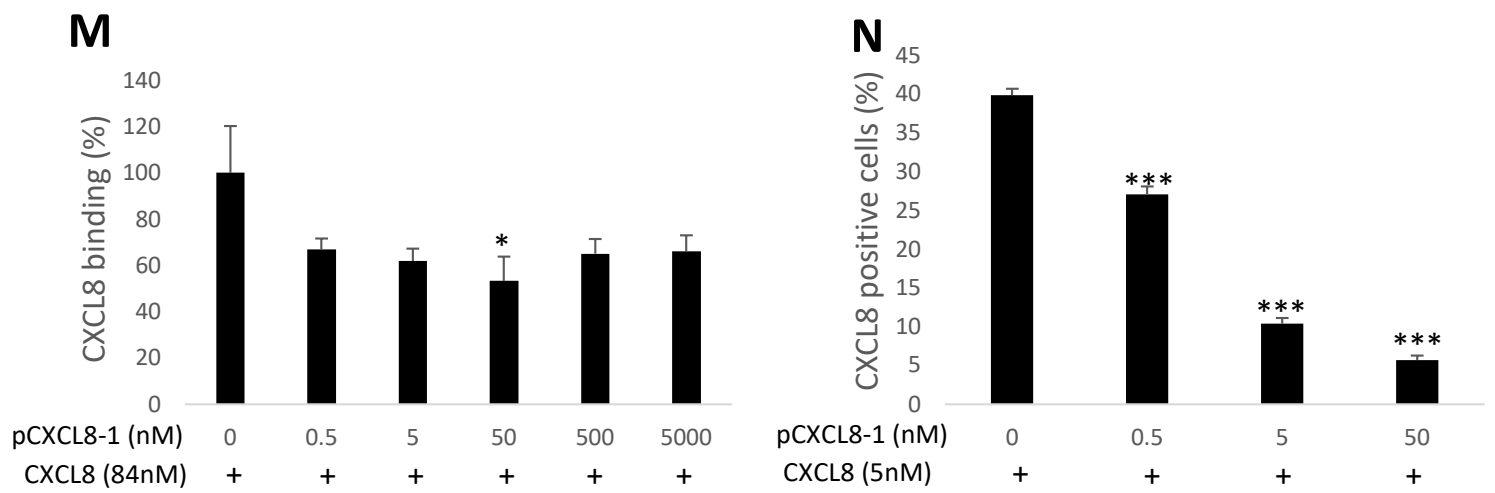
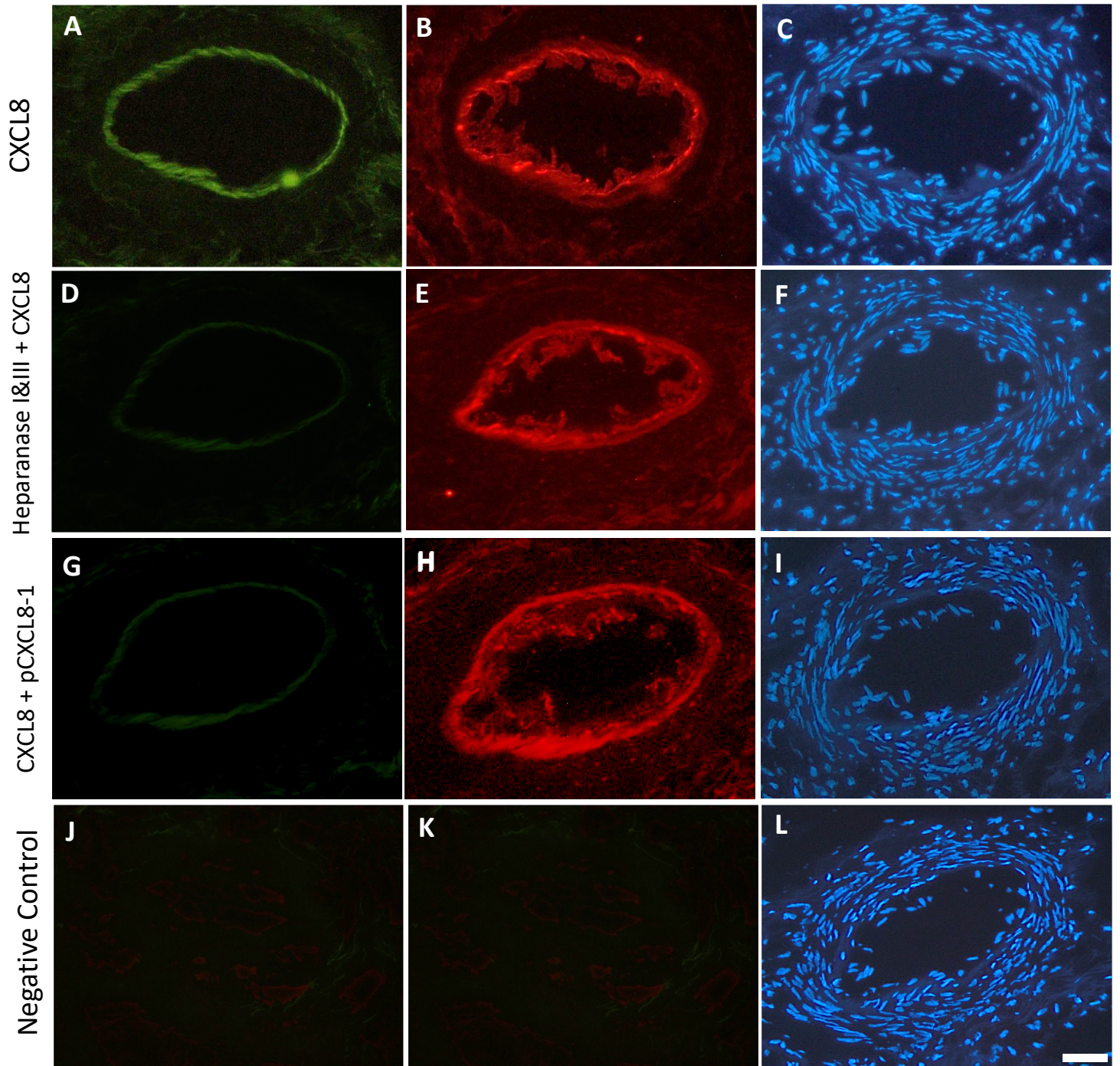
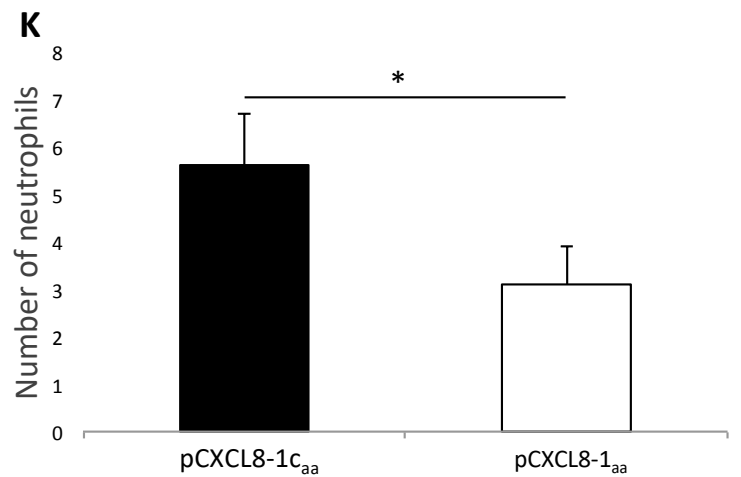
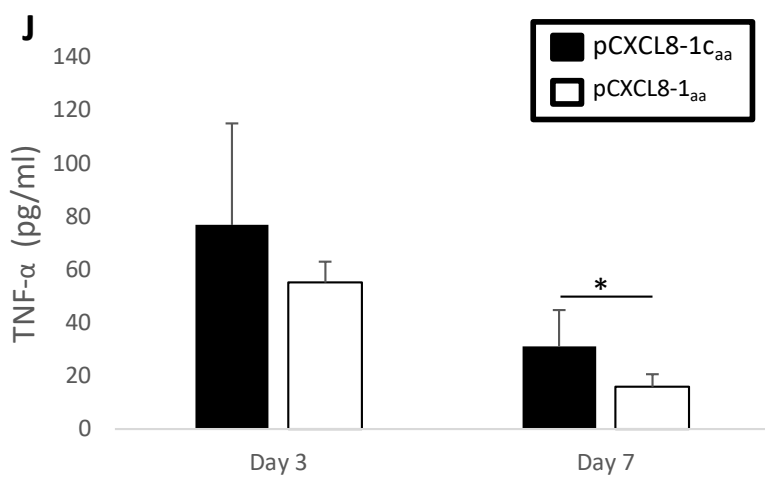
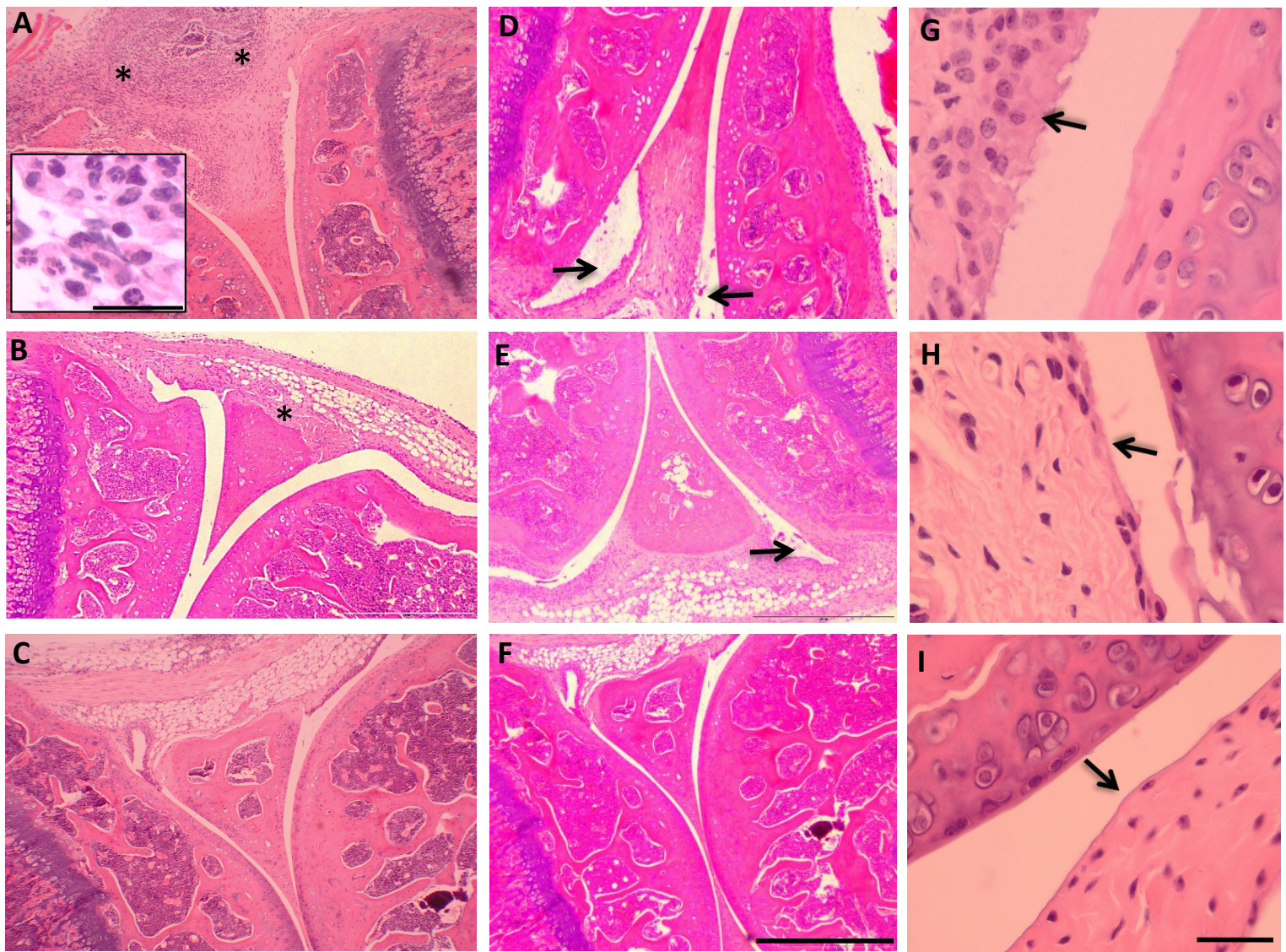
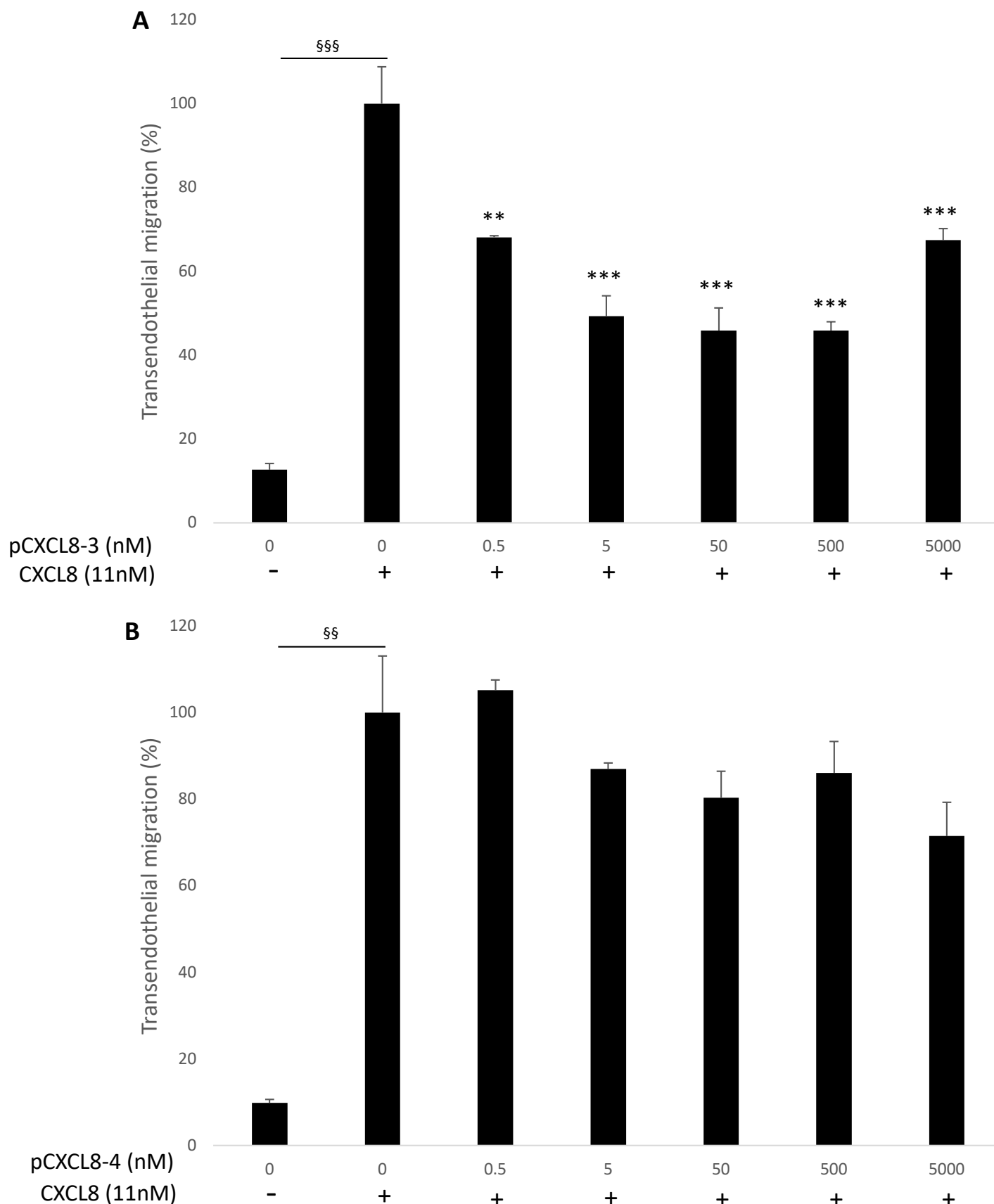


Figure 7



Supplementary Figure 1



Supplementary Figure 1: Anti-chemotactic effects of pCXCL8-3 and pCXCL8-4 on leukocyte transendothelial migration.

Anti-chemotactic ability of peptides was tested in HCMEC/D3 cells. On the y axis percentage of neutrophil transendothelial migration in response to increasing concentration of peptide (nM) on the x axis. Indicated (\pm) is the presence of 100 ng/ml chemokine. Data shown are mean transendothelial migration \pm SE (n=3). **p<0.01, ***p<0.001 compared to chemokine alone in absence of peptide, §p<0.01, §§p<0.001. Percentage migration is calculated from the total number of cells added.